

Troubleshooting Guide

Operations Center 5.0

April 26, 2013



Legal Notices

THIS DOCUMENT AND THE SOFTWARE DESCRIBED IN THIS DOCUMENT ARE FURNISHED UNDER AND ARE SUBJECT TO THE TERMS OF A LICENSE AGREEMENT OR A NON-DISCLOSURE AGREEMENT. EXCEPT AS EXPRESSLY SET FORTH IN SUCH LICENSE AGREEMENT OR NON-DISCLOSURE AGREEMENT, NETIQ CORPORATION PROVIDES THIS DOCUMENT AND THE SOFTWARE DESCRIBED IN THIS DOCUMENT "AS IS" WITHOUT WARRANTY OF ANY KIND, EITHER EXPRESS OR IMPLIED, INCLUDING, BUT NOT LIMITED TO, THE IMPLIED WARRANTIES OF MERCHANTABILITY OR FITNESS FOR A PARTICULAR PURPOSE. SOME STATES DO NOT ALLOW DISCLAIMERS OF EXPRESS OR IMPLIED WARRANTIES IN CERTAIN TRANSACTIONS; THEREFORE, THIS STATEMENT MAY NOT APPLY TO YOU.

For purposes of clarity, any module, adapter or other similar material ("Module") is licensed under the terms and conditions of the End User License Agreement for the applicable version of the NetIQ product or software to which it relates or interoperates with, and by accessing, copying or using a Module you agree to be bound by such terms. If you do not agree to the terms of the End User License Agreement you are not authorized to use, access or copy a Module and you must destroy all copies of the Module and contact NetIQ for further instructions.

This document and the software described in this document may not be lent, sold, or given away without the prior written permission of NetIQ Corporation, except as otherwise permitted by law. Except as expressly set forth in such license agreement or non-disclosure agreement, no part of this document or the software described in this document may be reproduced, stored in a retrieval system, or transmitted in any form or by any means, electronic, mechanical, or otherwise, without the prior written consent of NetIQ Corporation. Some companies, names, and data in this document are used for illustration purposes and may not represent real companies, individuals, or data.

This document could include technical inaccuracies or typographical errors. Changes are periodically made to the information herein. These changes may be incorporated in new editions of this document. NetIQ Corporation may make improvements in or changes to the software described in this document at any time.

U.S. Government Restricted Rights: If the software and documentation are being acquired by or on behalf of the U.S. Government or by a U.S. Government prime contractor or subcontractor (at any tier), in accordance with 48 C.F.R. 227.7202-4 (for Department of Defense (DOD) acquisitions) and 48 C.F.R. 2.101 and 12.212 (for non-DOD acquisitions), the government's rights in the software and documentation, including its rights to use, modify, reproduce, release, perform, display or disclose the software or documentation, will be subject in all respects to the commercial license rights and restrictions provided in the license agreement.

© 2014 NetIQ Corporation. All Rights Reserved.

For information about NetIQ trademarks, see <https://www.netiq.com/company/legal/> (<https://www.netiq.com/company/legal/>).

All third-party trademarks are the property of their respective owners.

Contents

About This Guide	5
1 Overview of Product Support	7
1.1 Contacting Novell Support	7
1.2 Third-Party Support	7
1.3 Gathering Information for Support	7
1.3.1 Running mosconfigprobe to Retrieve Configuration and Environment Information	8
1.3.2 Running mymoprobe to Retrieve Dashboard Configuration Information	8
1.3.3 Running cmsprobe to Retrieve Configuration Management System (CMS) Configuration Information	9
1.3.4 Gathering Information about the Operations Center Console	9
1.3.5 Diagnosing the Operations Center Server	9
1.3.6 Using the SIGQUIT Command to troubleshoot the Operations Center server for UNIX	11
2 Tips, Troubleshooting, and Common Issues	13
2.1 Problems Starting Operations Center as a Service	13
2.2 Troubleshooting the Console	13
2.2.1 Login Problems	14
2.2.2 Enabling Debug Logging	14
2.3 Validating Configurations and Troubleshooting Common Issues with Start Up Self Tests	14
2.3.1 Understanding the Test Definition Repository and Test Script Directories	15
2.3.2 Setting Tests to Halt Component Startup on Test Failure	15
2.3.3 Updating Retry Settings	16
2.3.4 Understanding Self Test Message Logs and Errors	16
2.4 Operations Center Server	17
2.4.1 CORBA Timeout Properties	17
2.4.2 Custom Java Class Loading Notes	18
2.4.3 Setting Up the Temp Directory for Operations Server	18
2.4.4 Verifying Space on the Web Server	18
2.5 Diagnosing ConfigStore Settings	19
2.6 Data Warehouse and Database	19
2.6.1 Database Warehouse Repository Log Messages	19
2.6.2 Overriding the Database URL	20
2.7 Customization Tips	21
2.7.1 Creating Custom Element Classes and Specifying Custom Icons	21
2.7.2 Date/Time Skewing	21
2.8 Internal LDAP Server Guidelines and Settings	22
2.8.1 General Guidelines	22
2.8.2 Non-SSL Settings	22
2.8.3 SSL Settings	22
2.9 Adapters	23
2.9.1 Suppressing Alarms in IBM Tivoli T/EC	23
2.10 Diagnosing Memory Errors	24
A Documentation Updates	25
A.1 April 2013 Patch Release	25
A.2 December 2012 Patch Release	25

A.3 June 2012 Patch Release26

About This Guide

The *Troubleshooting Guide* helps Operations Center administrators in diagnosing and troubleshooting issues with Operations Center software.

- ♦ [Chapter 1, “Overview of Product Support,”](#) on page 7
- ♦ [Chapter 2, “Tips, Troubleshooting, and Common Issues,”](#) on page 13
- ♦ [Appendix A, “Documentation Updates,”](#) on page 25

Audience

This guide is intended for Operations Center system administrators.

Feedback

We want to hear your comments and suggestions about this manual and the other documentation included with this product. Please use the *User Comments* feature at the bottom of each page of the online documentation.

Additional Documentation & Documentation Updates

This guide is part of the Operations Center documentation set. For the most recent version of the *Troubleshooting Guide* and a complete list of publications supporting Operations Center, visit our Online Documentation Web Site at [Operations Center 5.0 online documentation](#).

The Operations Center documentation set is also available as PDF files on the installation CD or ISO; and is delivered as part of the online help accessible from multiple locations in Operations Center depending on the product component.

Additional Resources

We encourage you to use the following additional resources on the Web:

- ♦ [NetIQ User Community \(https://www.netiq.com/communities/\)](https://www.netiq.com/communities/): A Web-based community with a variety of discussion topics.
- ♦ [NetIQ Support Knowledgebase \(https://www.netiq.com/support/kb/product.php?id=SG_XOPERATIONSCENTER_1_2\)](https://www.netiq.com/support/kb/product.php?id=SG_XOPERATIONSCENTER_1_2): A collection of in-depth technical articles.
- ♦ [NetIQ Support Forums \(https://forums.netiq.com/forumdisplay.php?26-Operations-Center\)](https://forums.netiq.com/forumdisplay.php?26-Operations-Center): A Web location where product users can discuss NetIQ product functionality and advice with other product users.

Technical Support

You can learn more about the policies and procedures of NetIQ Technical Support by accessing its [Technical Support Guide \(https://www.netiq.com/Support/process.asp#_Maintenance_Programs_and\)](https://www.netiq.com/Support/process.asp#_Maintenance_Programs_and).

Use these resources for support specific to Operations Center:

- ◆ Telephone in Canada and the United States: 1-800-858-4000
- ◆ Telephone outside the United States: 1-801-861-4000
- ◆ E-mail: support@netiq.com (support@netiq.com)
- ◆ Submit a Service Request: <http://support.novell.com/contact/> (<http://support.novell.com/contact/>)

Documentation Conventions

In Novell documentation, a greater-than symbol (>) is used to separate actions within a step and items in a cross-reference path. The > symbol is also used to connect consecutive links in an element tree structure where you can either click a plus symbol (+) or double-click the elements to expand them.

When a single pathname can be written with a backslash for some platforms or a forward slash for other platforms, the pathname is presented with a forward slash to preserve case considerations in the UNIX* or Linux* operating systems.

A trademark symbol (®, ™, etc.) denotes a Novell trademark. An asterisk (*) denotes a third-party trademark.

1 Overview of Product Support

The following topics provide information about contacting Technical Support and useful ways to gather information necessary for Technical Support to assist you:

- ♦ [Section 1.1, “Contacting Novell Support,” on page 7](#)
- ♦ [Section 1.2, “Third-Party Support,” on page 7](#)
- ♦ [Section 1.3, “Gathering Information for Support,” on page 7](#)

1.1 Contacting Novell Support

You can access our award-winning [Technical Support Web site](#) for a number of self-help resources and to register and check on service requests. For critical issues, we recommend that you call Technical Support directly. Visit the [Service Request Web site](#) to find the phone numbers for your region.

1.2 Third-Party Support

Because of the nature of the environments where Operations Center operates, it is naturally dependent on, and interacts with, a wide variety of third-party systems, such as:

- ♦ Operating Systems
- ♦ Management Systems
- ♦ Databases
- ♦ Third-party Applications

Technical Support cannot provide direct support for issues that are specifically related to any software component that is not a NetIQ/Novell product.

1.3 Gathering Information for Support

For some reported incidents, Support needs information from you about your Operations Center configuration, console, or server to assist in troubleshooting the potential cause of the problem.

- ♦ [Section 1.3.1, “Running mosconfigprobe to Retrieve Configuration and Environment Information,” on page 8](#)
- ♦ [Section 1.3.2, “Running mymoprobe to Retrieve Dashboard Configuration Information,” on page 8](#)
- ♦ [Section 1.3.3, “Running cmsprobe to Retrieve Configuration Management System \(CMS\) Configuration Information,” on page 9](#)
- ♦ [Section 1.3.4, “Gathering Information about the Operations Center Console,” on page 9](#)

- ♦ [Section 1.3.5, “Diagnosing the Operations Center Server,”](#) on page 9
- ♦ [Section 1.3.6, “Using the SIGQUIT Command to troubleshoot the Operations Center server for UNIX,”](#) on page 11

1.3.1 Running mosconfigprobe to Retrieve Configuration and Environment Information

The `mosconfigprobe` script gathers information on your patch level, platform, Java* environment, memory and GC usage, configurations, adapters, and logs for a specified number of days. This tool can safely be run while the Operations Center server is up.

The `configprobe.xml` configuration file is used to specify the files and log files that are captured in the output file.

To generate a `mosconfigprobe` output file to attach to your service request:

- 1 If necessary, update the `/OperationsCenter_install_path/config/configprobe.xml` file to change any default `mosconfigprobe` configuration values.

By default, `mosconfigprobe` retrieves all log files available in the log directories, but is not recursive. Modify the number of days of log files to retrieve by editing any log element `daystogather` attribute values.

If log files are in different directories, uncomment the `Logs` section and specify the directories where logs are located.

- 2 At a command prompt, issue the following command from the `/OperationsCenter_install_path/bin` directory:

```
./mosconfigprobe
```

where `OperationsCenter_install_path` is the Operations Center installation directory.

- 3 Attach the output ZIP file to your open service request.

The output file is saved to the `/OperationsCenter_install_path/bin` directory, in the format of `probe.Version_Number.zip`.

1.3.2 Running mymoprobe to Retrieve Dashboard Configuration Information

The `/OperationsCenter_Dashboard_install_path/bin/mymoprobe` script gathers information on your dashboard configuration. This tool can safely be run while the dashboard is running.

To generate a `mymoprobe` output file to attach to your service request:

- 1 At a command prompt in the `/OperationsCenter_Dashboard_install_path/bin` directory, issue the following command:

```
./mymoprobe
```

where `OperationsCenter_Dashboard_install_path` is the Operations Center Dashboard installation directory.

- 2 Attach the output ZIP file to your open service request.

The output file is saved to the `/OperationsCenter_Dashboard_install_path` directory, in the format of `dashboardprobe.Version_Number.zip`.

1.3.3 Running cmsprobe to Retrieve Configuration Management System (CMS) Configuration Information

The `/OperationsCenter_CMS_install_path/bin/cmsprobe` script gathers information on your CMS configuration. This tool can safely be run while the dashboard is running.

To generate a `cmsprobe` output file to attach to your service request:

- 1 At a command prompt in the `/OperationsCenter_CMS_install_path/bin` directory, issue the following command:

```
./cmsprobe
```

where `OperationsCenter_CMS_install_path` is the Operations Center CMS installation directory.

- 2 Attach the output ZIP file to your open service request.

The output file is saved to the `/OperationsCenter_CMS_install_path` directory, in the format of `cmsprobe.Version_Number.zip`.


1.3.4 Gathering Information about the Operations Center Console

The context of each thread in the client application is written to the Java console. You can cut and paste this information into an e-mail and send it to support.

To obtain information about the Operations Center console on Windows* and UNIX:

- 1 From the desktop, click *Start > Run* to open the Run dialog box.
- 2 Open the Java Web Start Application Manager by doing one of the following:
 - ♦ **Windows:** Enter `javaws -viewer` in the *Open* field (use lowercase), then click *OK*.
 - ♦ **UNIX:** At a command line in the directory where Java is installed, enter `javaws` (use all lowercase).

The Java Web Start Application Manager dialog box opens.

- 3 Click *File > Preferences* to open the Java Web Start Preferences dialog box.
- 4 Click the *Advanced* tab.
- 5 Select the *Show JAVA Console* check box.
- 6 Click *OK*.
- 7 Click  (*Close*) to close the Java Web Start Application Manager dialog box.
- 8 Close all Operations Center consoles.
- 9 Restart the Operations Center console.

The `JavaConsole` dialog box opens each time the Operations Center console starts.

- 10 Cut and paste the information in the Java Console dialog box into your open service request.

1.3.5 Diagnosing the Operations Center Server

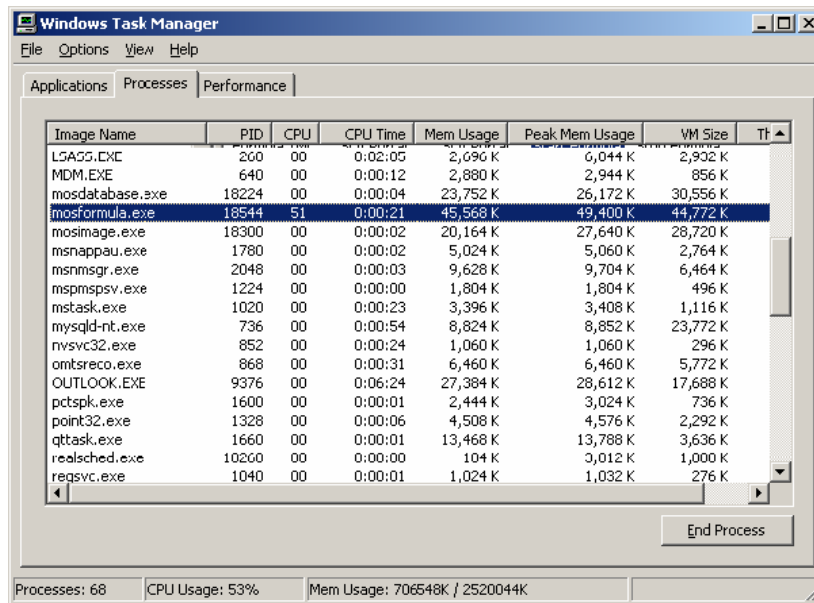
Operations Center provides the ability to execute a dump of Operations Center system information to a file that can assist Technical Support with troubleshooting the problem. The information is obtained by identifying the process ID (PID) for Operations Center, which is found in the `daemon.trc` file in the `stdout` directory.

- ♦ [“Windows” on page 10](#)
- ♦ [“UNIX” on page 11](#)

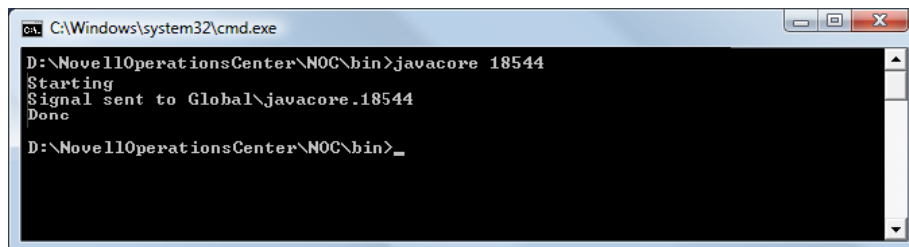
Windows

To obtain information about the Operations Center server on Windows:

- 1 From the desktop, right-click an empty space on the task bar at the bottom, then select *Task Manager* to open the Windows Task Manager.
- 2 Click the *Processes* tab to display the Processes page:



- 3 Locate the PID of the `mosformula.exe` process in the Windows Task Manager.
In the example above, the `mosformula.exe` PID is 18544.
- 4 From a command line in the `/OperationsCenter_install_path/bin` directory, enter `javacorePID` to initiate a process to write the system information about Operations Center to the `daemon.trc` file.
PID means Process ID for `mosformula.exe`.
It can take several minutes to complete writing the information.



- 5 Using a text editor, open `/OperationsCenter_install_path/logs/daemon.trc` to verify that the results of the thread dump are recorded.
- 6 Repeat [Step 4](#) and [Step 5](#) twice to ensure that all system information is recorded.
- 7 Attach the `daemon.trc`, `formula.trc`, and `fsgc.log` files to your open service request.

UNIX

To obtain system information about Operations Center on UNIX, a signal is sent to the application to generate a core file. Before a signal can be sent, determine the type of signal required. The core file can be generated as a separate file (the AIX VM does this) or the information can be placed into one of the standard Operations Center trace files (`daemon.trc`).

- 1 To display the Operations Center PID, go to a command line and enter the following command:

```
$ ps ef | grep Formula.properties
```

The Formula process properties display, as shown:

```
The formula 35442 38448 0 10:56:43 pts/0 117:04 /usr/java130/jre/bin/java -
classpath /apps/formula/html/classes/common.jar:/apps/formula/html/classes:
/apps/formula/html/classes/swingall.jar:/apps/formula/classes/server.j
ar:/apps/formula/classes:/apps/formula/classes/rsa.jar -Xmx256m com.mo
sol.Formula.Server.ServerImpl /apps/formula/config/Formula.properties
-CORBA.Port 2000
```

- 2 Identify the Formula PID, which is located following `formula` in the properties. In the example above, the Formula PID is 35442.
- 3 Send a SIGQUIT signal by performing one of the following actions for the appropriate operating system:

- ◆ **Sun* or HP*:** At a command line, enter:

```
kill -s-quit formula PID
```

- ◆ **AIX*:** At a command line, enter:

```
kill -3 PID
```

- ◆ **Linux*:** At a command line, enter:

```
kill -s quit PID
```

PID means Formula process ID.

The operating system dumps the thread information to the `daemon.trc` file.

- 4 Verify that the `daemon.trc` file contains the system information.
- 5 Attach the `/OperationsCenter_install_path/logo/daemon.trc` file to your open support ticket.

1.3.6 Using the SIGQUIT Command to troubleshoot the Operations Center server for UNIX

Issue the SIGQUIT command to troubleshoot the Operations Center server for UNIX systems. The SIGQUIT command captures system information when the Operations Center server is running and is in the locked state. It is often useful to have several consecutive SIGQUIT signals issued to be able to see if the server is processing information or if it has locked up in a certain segment of code.

The SIGQUIT command is indicated when:

- ◆ The `mosstatus` command does not return any output and hangs
- ◆ The server appears to be running with a `mosstatus` command, but users cannot log in
- ◆ A `ps -ef | grep jre` or a `ps -ef | grep java` on UNIX indicates that your server processes are running, but the `mosstatus` command doesn't return a running server
- ◆ The Operations Center console displays the message `Locating server...`, and your server processes are running

- ♦ The Operations Center console displays the message `Initializing user interface...`, but the Operations Center console does not display properly and your Operations Center processes are running
- ♦ A `grep` for the Web server port on 8080 is not established and the Operations Center console cannot locate the Operations Center server for connection, but your Operations Center server processes are running

2 Tips, Troubleshooting, and Common Issues

This section summarizes tips and common issues that our customers have found useful. This information is organized by product or product area.

- ♦ [Section 2.1, “Problems Starting Operations Center as a Service,” on page 13](#)
- ♦ [Section 2.2, “Troubleshooting the Console,” on page 13](#)
- ♦ [Section 2.3, “Validating Configurations and Troubleshooting Common Issues with Start Up Self Tests,” on page 14](#)
- ♦ [Section 2.4, “Operations Center Server,” on page 17](#)
- ♦ [Section 2.5, “Diagnosing ConfigStore Settings,” on page 19](#)
- ♦ [Section 2.6, “Data Warehouse and Database,” on page 19](#)
- ♦ [Section 2.7, “Customization Tips,” on page 21](#)
- ♦ [Section 2.8, “Internal LDAP Server Guidelines and Settings,” on page 22](#)
- ♦ [Section 2.9, “Adapters,” on page 23](#)
- ♦ [Section 2.10, “Diagnosing Memory Errors,” on page 24](#)

2.1 Problems Starting Operations Center as a Service

If running Java 7 on a Windows server and you are having difficulties starting the Operations Center service, you might need to install the Microsoft Visual C++ 2010 Redistributable Package to obtain the `msvcr100.dll` file.

See [Java Runtime Environment](#) in the [Operations Center 5.0 Getting Started Guide](#) for more information.

2.2 Troubleshooting the Console

The following topics pertain to troubleshooting console issues:

- ♦ [Section 2.2.1, “Login Problems,” on page 14](#)
- ♦ [Section 2.2.2, “Enabling Debug Logging,” on page 14](#)

2.2.1 Login Problems

Problems with logging into Operations Center using Java Web Start might require clearing the Web Start cache. For instructions, see [Java's Web page on clearing the Java cache \(http://www.java.com/en/download/help/plugin_cache.xml\)](http://www.java.com/en/download/help/plugin_cache.xml)

2.2.2 Enabling Debug Logging

Console debug logging is available for client UI categories.

To enable console debug logging:

- 1 In a text editor, open the `/OperationsCenter_install_path/html/client/launch.jnlp` file.
- 2 In the *Logging Options* section, add the following property:

```
<property name="verboseCategories" value="categories" />
```

Where *categories* is a comma separated list of log categories. For example,
"Formula.Client.Browser, Formula.Client.MainFrame"

2.3 Validating Configurations and Troubleshooting Common Issues with Start Up Self Tests

Operations Center self tests run automatically at start up to test configurations and verify the server is healthy before starting the application. These self tests check for common configuration problems and issue warnings or stop the server from starting if applicable. If problems are found, information is written to the server logs.

The following tests are run at start up:

- ♦ **AvailablePort** (formula.web.server.port, formula.web.server.ssl.port, and rmi.port)
- ♦ **IsLocalHost/IP** (formula.web.server.host and MOAddress)
- ♦ **VMMemory**
- ♦ **DiskFreeSpace** (formula.home)
- ♦ **HttpURLCheck** (ImageServer.ExternalServer and ImageServer.InternalServer)
- ♦ **FilePermissions** (formula.home)
- ♦ **JavaVersion**

NOTE: Default test scripts are not editable and any changes to these scripts, except configurable test settings, are ignored. All test files are signed and if modified, a warning message is logged.

Configurable test settings include the critical flag and retry settings. See [Section 2.3.2, "Setting Tests to Halt Component Startup on Test Failure," on page 15](#) and [Section 2.3.3, "Updating Retry Settings," on page 16](#) for more information about these configurable settings.

The following sections address how to set various parameters on the self tests and the location of log files:

- ♦ [Section 2.3.1, "Understanding the Test Definition Repository and Test Script Directories," on page 15](#)
- ♦ [Section 2.3.2, "Setting Tests to Halt Component Startup on Test Failure," on page 15](#)

- ♦ [Section 2.3.3, “Updating Retry Settings,”](#) on page 16
- ♦ [Section 2.3.4, “Understanding Self Test Message Logs and Errors,”](#) on page 16

2.3.1 Understanding the Test Definition Repository and Test Script Directories

Self test scripts are located in the product component root directories under the Operations Center installation directory:

- ♦ `/OperationsCenter_install_path/SelfTestScripts`
- ♦ `/OperationsCenter_CMS_install_path/SelfTestScripts`
- ♦ `/OperationsCenter_Dashboard_install_path/SelfTestScripts`

Under each of the `SelfTestScripts` directories, new directories are created for each test during the first run, such as:

- ♦ `/OperationsCenter_install_path/SelfTestScripts\NOC`
- ♦ `/OperationsCenter_install_path/SelfTestScripts\NOC Daemon`

Each of these test script directories contain the following two files:

- ♦ **definition.xml:** defines the configuration of the test; where to retrieve values.
- ♦ **unit.xml:** defines the hierarchical ordered set of tests to be run and the inputs required.

2.3.2 Setting Tests to Halt Component Startup on Test Failure

When a critical test fails, it log errors and halt the product component at startup. It is possible to set the critical flag on any test so that the component does not start on test failure. Setting a group of test to critical will halt product component start up if any of the tests in the group fails.

WARNING: Self tests ensure that your environment is properly configured and that disabling the criticality of tests could result in your components starting in an unusable state.

To change the critical flag for a test:

- 1 Open the `/OperationsCenter_ProductComponent_install_path/SelfTestScripts/script_name/unit.xml` file in any text or XML editor.

Where `OperationsCenter_ProductComponent_install_path` is the installation path for the Operations Center server, CMS or Dashboard.

- 2 To log errors and halt the component from starting up, add or set the critical property in the test's XML attributes as:

```
critical="true"
```

For example, the `JavaVersion` test would be.

```
<test classname="com.mosol.selftest.tests.JavaVersion" critical="true"
mandatory="true" name="java version">
```

- 3 To continue to log errors but not halt component startup on test failure, set the `critical` attribute to `false`.
- 4 Save the file.

2.3.3 Updating Retry Settings

When a test fails, it is possible to retry the execution of the test before calling the test a failure.

There are 2 XML attributes that can be set in the test's declaration to configure retry settings:

- ♦ **retries:** the number of times to retry the test after the first execution fails
- ♦ **retryDelay:** the number of seconds to wait before attempting to retry the test

To update retry settings for a test:

- 1 Open the `/OperationsCenter_ProductComponent_install_path/SelfTestScripts/script_name\unit.xml` file in any text or XML editor.

Where `OperationsCenter_ProductComponent_install_path` is the installation path for the Operations Center server, CMS or Dashboard.

- 2 To set the number of retries to perform, set the `retries` attribute. To set the number of seconds to wait before each attempt, set the `retryDelay` attribute.

For example, the following test will retry twice if there is a problem and wait 3 seconds before each try:

```
<test classname="com.mosol.selftest.tests.HTTPURLCheck" critical="true"
mandatory="true" name="internal image server" retries="2" retryDelay="3">
```

- 3 Save the file.

2.3.4 Understanding Self Test Message Logs and Errors

During normal operations, self tests provide informational logging to describe the tests run and the actions performed by the tests. Logs can be found in the standard log file of the product component for which the tests are being run. For example:

- ♦ `/OperationsCenter_install_path/logs`
- ♦ `/OperationsCenter_CMS_install_path/logs`

The following is an example of an informational log message for a self test:

```
2010-07-28 10:34:30,655 INFO Self Tests/NOC Daemon/java version - Minimum Supported
Java version is :1.6.0
```

- ♦ Where the log level is `INFO`. The level of logging is customizable for a group of tests or a single test by adding or setting `logLevel="loglevel"` to the XML attributes of the test, with acceptable `loglevel` values of `DEBUG`, `INFO`, `WARN` or `ERROR`.
- ♦ And, where the log category is `Self Tests/NOC Daemon/java version`. The log category of the log entry is the fully pathed name of the test outputting the log.

Error logs can indicate problems in your configuration. Use the Operations Center Customizer to edit the configuration as appropriate. [Table 2-1](#) lists the possible cause and action for various error messages.

Table 2-1 Sample Error Message in Self Test Logs

Error Message	Possible Cause and Action
An IOException occurred binding socket.	The port noted in previous messages might already be in use by another application. Free the port or change the relevant port value in the Operations Center Customizer.
<code>permissions_level</code> access is denied on ' <code>filename</code> '	The current user (running Operations Center) does not have the required permissions. Verify that the user has the appropriate permissions and reset file permissions if necessary.
Exception attempting to reach URL	The server might not be running or might not have completed its initialization. Check that the server is running and initialized, and retry the connection. Adjust the <code>retries</code> settings if necessary.
<code>host_address</code> is not a local address.	The IP address to which this host address resolves is not assigned to this machine. Verify that the host specified in the Customizer is the correct host name of the machine.
Unknown host " <code>host_address</code> "	The IP address for the host cannot be found. Verify that the host specified in the Customizer is the correct host name of the machine.
Critical test " <code>test_name</code> " failed. Stopping execution	A test marked critical has failed, and the server has stopped. Review the above errors to correct possible configuration issues.
Execution of test " <code>test_name</code> " failed in <code>duration</code> ms. (<code>number_of_attempts</code> attempts)	A test failed, possibly after multiple attempts, but server startup has not been halted. Review the above error logs to correct possible configuration issue.

2.4 Operations Center Server

- ♦ [Section 2.4.1, "CORBA Timeout Properties," on page 17](#)
- ♦ [Section 2.4.2, "Custom Java Class Loading Notes," on page 18](#)
- ♦ [Section 2.4.3, "Setting Up the Temp Directory for Operations Server," on page 18](#)
- ♦ [Section 2.4.4, "Verifying Space on the Web Server," on page 18](#)

2.4.1 CORBA Timeout Properties

The CORBA timeout properties allows you to set the number of seconds for client requests to the server before the operation or connection is terminated.

To set the CORBA Timeout property:

- 1 Open the `/OperationsCenter_install_path/html/applet_params.xml` and `/OperationsCenter_install_path/Formula.custom.properties` files in a text editor.
- 2 Add or edit the following properties: Edit the `property`, where `seconds` is the number of seconds before failing if an unconnected remote reference fails to connect.
 - ♦ **CORBA.connectionTimeout:** Set to the number of seconds before failing if an unconnected remote reference fails to connect.

If the customer is using LDAP, set this value to 60 or higher to allow authentication of users.

- ♦ **CORBA.operationTimeout:** Set to the number of seconds before failing if the remote reference fails to service a request.
- ♦ **CORBA.transactionTimeout:** Set to the number of seconds before failing if the remote reference fails to service a transaction.

3 Save the files.

2.4.2 Custom Java Class Loading Notes

This section lists information related to custom Java classes:

- ♦ Load custom archive files that should be available to all the Operations Servers servers in the `/OperationsCenter_install_path/classes/ext` directory.
- ♦ Load a single class or set of classes that are not in an archive file in the `/OperationsCenter_install_path/classes` directory.
- ♦ Use the full path name. For example, if the `myclass.class` file is in the `com.acme.somepackage` package directory, the class file must be in the `/OperationsCenter_install_path/classes/com/acme/somepackage` directory.
- ♦ Load server patches in the `/OperationsCenter_install_path/patches` directory.
- ♦ Load client patches in the `/OperationsCenter_install_path/html/client/patches` directory.
- ♦ Some third-party integrations require additional `.jar` files. Read the third-party documentation for special instructions. For example, Spectrum Version 7 expects all additional `.jar` files to be loaded in the `/OperationsCenter_install_path/integrations/ext/spectrumV71` directory.

2.4.3 Setting Up the Temp Directory for Operations Server

The `tmp` directory is controlled by the `java.io.tmpdir` Java parameter and defaults to `/var/tmp`. The `tmp` directory can be specified as a Java arg in the Operations Center Configuration Manager:

```
-Djava.io.tmpdir=/formula/tmp
```

2.4.4 Verifying Space on the Web Server

If the Web server won't start and the `/var/tmp` file is filling up, there might not be enough space in `/var`.

To verify the space in the `/var/tmp` file:

- 1 For UNIX, enter `df -k` at a command prompt.
- 2 If necessary, modify the `tmp` directory for Operations Center.

For more information, see [Section 2.4.3, "Setting Up the Temp Directory for Operations Server,"](#) on page 18.

2.5 Diagnosing ConfigStore Settings

If you are experiencing data consistency issues (non-clustered environment) or two servers that are functioning like they are the cluster coordinator, you might have issues with Configuration Storage (ConfigStore) settings.

Query the ConfigStore database to diagnose server connection issues. Using a SQL client against the ConfigStore database (non-OBDD databases only), view the `CFG_CLIENT_DATA` table which contains information about client connections and details.

The connection information in the `CFG_CLIENT_DATA` table can help to:

- ♦ **In a Non-Clustered Environment:** Verify that there isn't more than one server using the ConfigStore.

If you find more than one server connecting to the ConfigStore database, reconfigure your servers so that only one connects to each ConfigStore.

- ♦ **Clustered Environment:** Verify that all servers are connecting the same ConfigStore.

In a clustered environment, all servers must point to the same ConfigStore database. If you find a clustered server not connecting to the correct ConfigStore, change the Configuration Storage settings using the server's Configuration Manager.

For information about configuring Configuration Storage, see "[Configuring the Database for Configuration Storage](#)" in the *Operations Center 5.0 Server Configuration Guide*.

2.6 Data Warehouse and Database

- ♦ [Section 2.6.1, "Database Warehouse Repository Log Messages,"](#) on page 19
- ♦ [Section 2.6.2, "Overriding the Database URL,"](#) on page 20

2.6.1 Database Warehouse Repository Log Messages

The following message in the `formula.trc` log indicates that the Data Warehouse is in backup mode:

```
INFO Backup Repository - Data Warehouse Backup repository started.  
INFO Backup Repository - Backup operation mode changed to: STORE
```

The following message in the `formula.trc` log indicates that Operations Center is writing to the Data Warehouse:

```
INFO Backup Repository - Backup operation mode changed to: TRANSFER  
INFO Performance.Engine - moving from backup to warehouse repository
```

2.6.2 Overriding the Database URL

Many Operations Center components (such as TEC+ and BEM adapters) require a database connection. You can use the Database Type property to override the use of the sourceforge driver or other native driver.

The following sections include examples of how to use the INET driver embedded in the Operations Center product:

- ♦ [“Setting Up the INET Driver for a Microsoft* SQL Server” on page 20](#)
- ♦ [“Setting Up the INET Driver for Oracle*” on page 20](#)
- ♦ [“Setting Up the INET Driver for Sybase*” on page 20](#)

Setting Up the INET Driver for a Microsoft* SQL Server

At the command prompt, enter:

```
com.inet.tds.TdsDriver|jdbc:inetdaemssql_protocol:database_server_name:database_server_port:database_name|select getDate()
```

where:

- ♦ *database_server_name* is the server where the database is installed
- ♦ *database_server_port* is the port used to communicate with Operations Center
- ♦ *database_name* is the database name

For example:

```
com.inet.tds.TdsDriver|jdbc:inetdae7:mssqldbvr:1433:formula|select getDate()
```

Setting Up the INET Driver for Oracle*

At the command prompt, enter:

```
com.inet.ora.OraDriver|jdbc:inetora:database_server_name:database_server_port:database_name|select sysdate from dual
```

where:

- ♦ *database_server_name* is the server where the database is installed
- ♦ *database_server_port* is the port used to communicate with Operations Center
- ♦ *database_name* is the database name

For example:

```
com.inet.ora.OraDriver|jdbc:inetora:oracledbvr:1521:formula|select sysdate from dual
```

Setting Up the INET Driver for Sybase*

At the command prompt, enter:

```
com.inet.syb.SybDriver|jdbc:inetsyb:databaseServer:databaseServerPort|select getDate()
```

where:

- ♦ *database_server_name* is the server where the database is installed
- ♦ *databaseServerPort* is the port used to communicate with Operations Center

For example:

```
com.inet.syb.SybDriver|jdbc:inetsyb:sybasedbsvr:4100|select getDate()
```

2.7 Customization Tips

- ♦ [Section 2.7.1, “Creating Custom Element Classes and Specifying Custom Icons,”](#) on page 21
- ♦ [Section 2.7.2, “Date/Time Skewing,”](#) on page 21

2.7.1 Creating Custom Element Classes and Specifying Custom Icons

- ♦ [“Viewing the Operations Center Icon Library”](#) on page 21
- ♦ [“Implementing Custom Icons”](#) on page 21

Viewing the Operations Center Icon Library

To view the Operations Center icon library, go to http://operations_center_server:port/icons/list.

Implementing Custom Icons

- 1 Copy the `/OperationsCenter_install_path/database/examples/IconAliases.properties` file to the `/OperationsCenter_install_path/database` directory and create an entry for each icon substitution.

For example:

```
MyRouterBrand=device_router
```

- 2 To add custom icons (`.gif` files named to match the entries created in [Step 1](#)) to the images directories:
 - 2a Save a 16x16 version of the icon in the `ManagedObjects/html/images/small` directory.
 - 2b Save a 32x32 version of the icon in the `ManagedObjects/html/images/large` directory.
This icon is used specifically for the *Layout* view.

2.7.2 Date/Time Skewing

Date/time skewing is used to align database information for reporting.

To turn off the Date/Time skew:

- 1 In a text editor, open the `/OperationsCenter_install_path/html/applet_params.xml` file.
- 2 Add the following entry to the `<params><common>` element:

```
<param name="Connection.correctTimeSkew" value="false" />
```

- 3 Force all users off Operations Center.

When users log in again, Operations Center no longer performs date/time skewing.

2.8 Internal LDAP Server Guidelines and Settings

- ♦ [Section 2.8.1, “General Guidelines,” on page 22](#)
- ♦ [Section 2.8.2, “Non-SSL Settings,” on page 22](#)
- ♦ [Section 2.8.3, “SSL Settings,” on page 22](#)

2.8.1 General Guidelines

Make sure that you don't have trailing spaces after any of the values. For example,

- ♦ **Host URL:** ldap://managed1.mosol.com:389
- ♦ **Base DN:** ou=users,ou=acme corporation,dc=acme,dc=com
- ♦ **Filter:** (objectclass=*)
- ♦ **Username Attribute:** sAMAccountName
- ♦ **Principal:** Change it to your network user name and password; for example:
acme/jpeters, "password"

2.8.2 Non-SSL Settings

Make sure that you don't have trailing spaces after any of the values. For example,

- ♦ **Host URL:** ldap://acme1.acme.com:389
- ♦ **Authentication:** simple
- ♦ **Security Protocol:** none

2.8.3 SSL Settings

Make sure that you don't have trailing spaces after any of the values. For example,

- ♦ **Host URL:** ldaps://acmecorp1.acme.com:636
- ♦ **Authentication:** external
- ♦ **Security Protocol:** ssl

Note that these settings do not apply to AIX.

Currently, we do not have an SSL-enabled LDAP server. You must get a signed certificate from the Active Directory* where you want to connect.

Use the following command to add the certificate to the JRE* under the Operations Center installation:

```
keytool -import -v -alias formula_ldap -file AD_cert -keypass changeit  
-keystore [location to 1.4 JRE cacerts, usually under ManagedObjects/bin]  
-storepass changeit
```

where *AD_cert* is the Active Directory certificate.

Use the following command to verify that the certificate has been installed:

```
keytool -list -keystore [location to 1.4 JRE cacerts, usually under ManagedObjects/  
bin]
```

2.9 Adapters

- ♦ [Section 2.9.1, “Suppressing Alarms in IBM Tivoli T/EC,” on page 23](#)

2.9.1 Suppressing Alarms in IBM Tivoli T/EC

- 1 Update the enumeration in the rulebase:
 - 1a Open the root `.baroc` file in `TEC_CLASSES` for the specific ruleset.
 - 1b Go to the `ENUMERATIONS` section and find `ENUMERATION STATUS`.
 - 1c Add `"100 SUPPRESSED"` after the `"30 CLOSED"` entry.
- 2 Enter `wcomprules rulebaseName` at a command prompt to compile the rulebase.
Replace `rulebaseName` with the file name of Rules database.
- 3 Enter `wstopesvr` at a command prompt to stop the T/EC event server.
- 4 Enter `wstartesvr` at a command prompt to start the T/EC event server.
The `tec_t_status_event` table updates with the Suppressed option.
- 5 To verify that the `tec_t_status_event` table has the data from the database, execute the following SQL query:

```
select * from tec_t_status_event
```
- 6 Verify and insert as need the following values in the `tec_t_status_event` table:

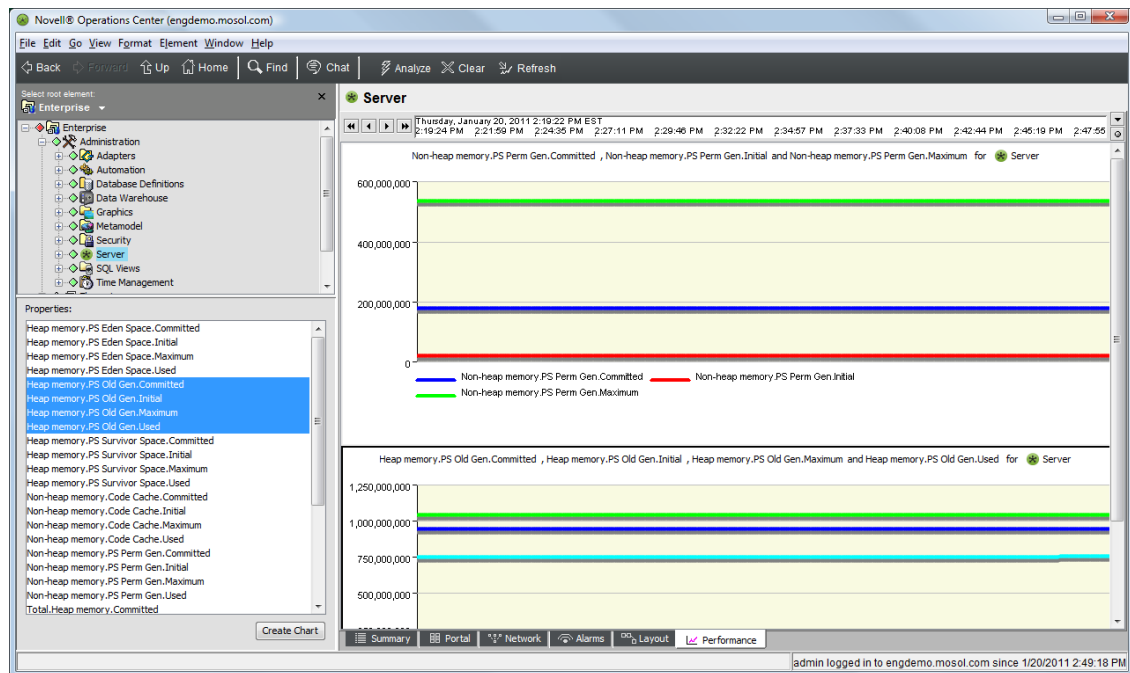
```
(100, 'STATUS_EVENT', 0, 'SUPPRESSED')
```

2.10 Diagnosing Memory Errors

By default, the Operations Center server saves data related to various garbage collection and memory activities that can help when diagnosing memory errors. The actual properties can vary, depending on the virtual machine running.

To chart server memory statistics:

- 1 In the *Explorer* pane, expand the *Administration* root element > *Server*.
- 2 Click the *Performance* tab to display the *Performance* view.



- 3 Adjust the timeline to select the desired time range.
- 4 Select the memory properties in the *Properties* pane.
- 5 Select all four *Old Generation* properties.
- 6 Click *Create Chart*.
- 7 Select all four *Perm Generation* properties.
- 8 Click *Create Chart*.

This creates a single view of the two most important memory charts related to the Operations Center virtual machine. Take a screen shot of these charts and include it with the `memsamples.dat` and `fsgc.log` files from the Operations Center log directories when working with Technical Support on memory issues.

A Documentation Updates

This section contains information on documentation content changes that were made in the *Troubleshooting Guide* after the initial release of Operations Center 5.0. The changes are listed according to the date they were published.

If you need to know where a copy of the PDF documentation you are using is the most recent, the PDF document includes a publication date on the title page.

- ♦ [Section A.1, “April 2013 Patch Release,” on page 25](#)
- ♦ [Section A.2, “December 2012 Patch Release,” on page 25](#)
- ♦ [Section A.3, “June 2012 Patch Release,” on page 26](#)

A.1 April 2013 Patch Release

Global updates were made to installation and file path references for Operations Center and Operations Center features, as follows:

- ♦ **Operations Center:** The location of the main Operations Center installation is shown as *OperationsCenter_install_path*
- ♦ **Operations Center Dashboard:** The location of the Dashboard is shown as *OperationsCenter_Dashboard_install_path*
- ♦ **Operations Center Configuration Management System (CMS):** The location of the CMS is shown as *OperationsCenter_CMS_install_path*
- ♦ **Operations Center Experience Manager:** The location of the Experience Manager is shown as *OperationsCenter_ExperienceManager_install_path*

In addition, updates were made to the following sections:

Location	Update
Section 1.3, “Gathering Information for Support,” on page 7	Update instructions required to run configprobe output files for Operations Center, Dashboard and CMS.
Section 2.1, “Problems Starting Operations Center as a Service,” on page 13	You might need to obtain the <code>msvcr100.dll</code> file if you are running Java 7 on a Windows server.

A.2 December 2012 Patch Release

Updates were made to the following sections:

Location	Update
Section 2.5, "Diagnosing ConfigStore Settings," on page 19	Instructions on finding server connection issues with the Configuration Storage database that might be causing data consistency or conflicting cluster coordinator issues.

A.3 June 2012 Patch Release

Updates were made to the following sections:

Location	Update
Section 1.3.3, "Running cmsprobe to Retrieve Configuration Management System (CMS) Configuration Information," on page 9	Instructions on gathering configuration information from CMS.