



# NetIQ SecureLogin - Advanced Authentication Plugin

## **Installation Guide**

Version 5.1.0

# Table of Contents

---

|  |           |
|--|-----------|
|  | <b>1</b>  |
| <b>Table of Contents</b> .....   | <b>2</b>  |
| <b>Introduction</b> .....  | <b>3</b>  |
| About This Document .....  | 3         |
| <b>System Requirements</b> .....   | <b>4</b>  |
| <b>Installing NetIQ SecureLogin Advanced Authentication Plugin</b> ..... | <b>5</b>  |
| Installing NSL AA Plugin .....   | 5         |
| Removing NSL AA Plugin .....   | 9         |
| <b>Troubleshooting</b> .....   | <b>10</b> |
| Cannot Install NSL AA Plugin .....                                       | 10        |
| <b>Index</b> .....   | <b>11</b> |

# Introduction


## About This Document


### Purpose of the Document


This NetIQ SecureLogin Advanced Authentication Plugin Installation Guide is intended for system administrators and describes how to install NetIQ SecureLogin Advanced Authentication Plugin.

### Document Conventions

This document uses the following conventions:

 **Warning.** This sign indicates requirements or restrictions that should be observed to prevent undesirable effects.

 **Important notes.** This sign indicates important information you need to know to use the product successfully.

 **Notes.** This sign indicates supplementary information you may need in some cases.

 **Tips.** This sign indicates recommendations.

- Terms are italicized, e.g.: ***Authenticator***.
- Names of GUI elements such as dialogs, menu items, and buttons are put in bold type, e.g.: the **Logon** window.

## System Requirements


Before installing the product, check that the following system requirements are fulfilled:

- Microsoft Windows 7 SP1 x86/x64
- ✖ NetIQ v4.10 R3 supports NetIQ SecureLogin v8.0.1, NetIQ v4.11 - NetIQ SecureLogin v8.0.3.

# Installing NetIQ SecureLogin Advanced Authentication Plugin

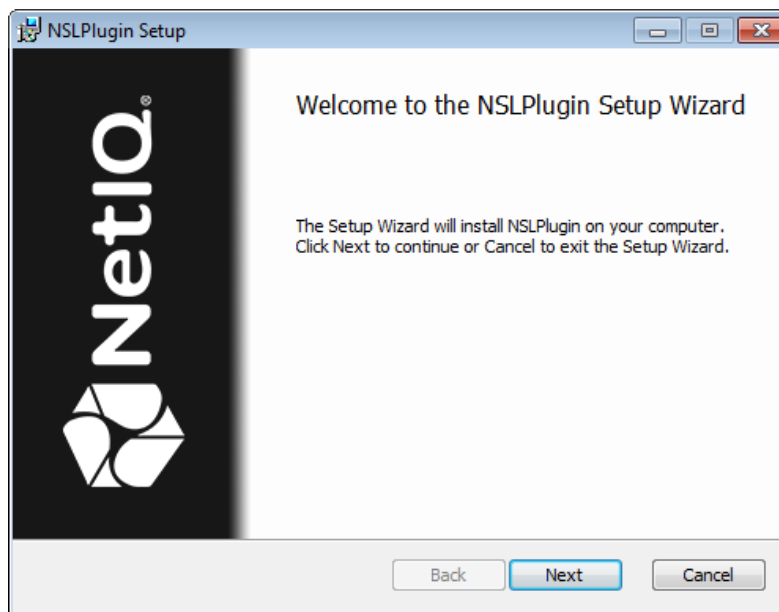
**NetIQ SecureLogin Advanced Authentication Plugin** is intended for users who want to get additional authentication opportunities that are granted by software solutions of NetIQ.

## Installing NSL AA Plugin

 Before the installation of NSL AA Plugin make sure that **Client** or **RTE**, at least one **authentication provider** and **Novell SecureLogin** are already installed on your computer. Otherwise the installation of NSL AA Plugin will be impossible.

To install NSL AA Plugin via Setup Wizard:

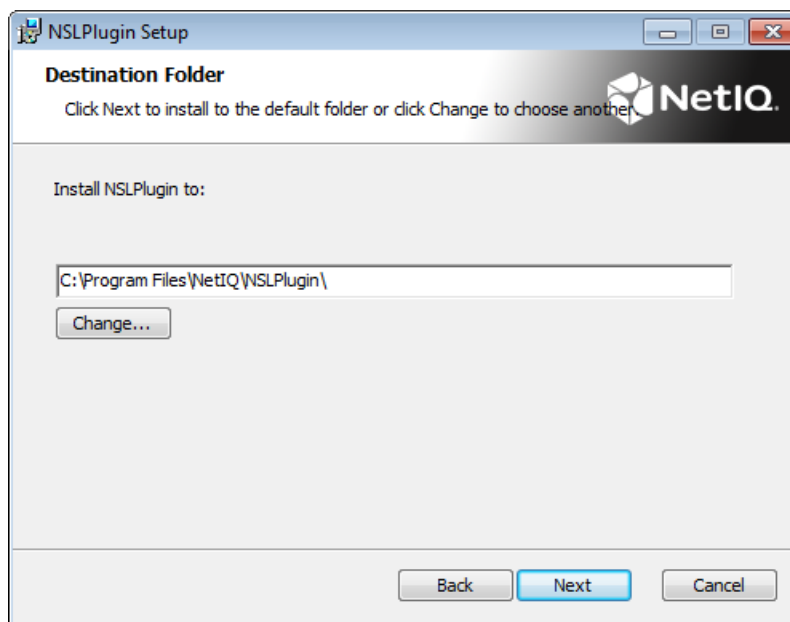
1. Tick **NSLPlugin** in the list of components and click **Continue**.
2. Click **Next** to continue.



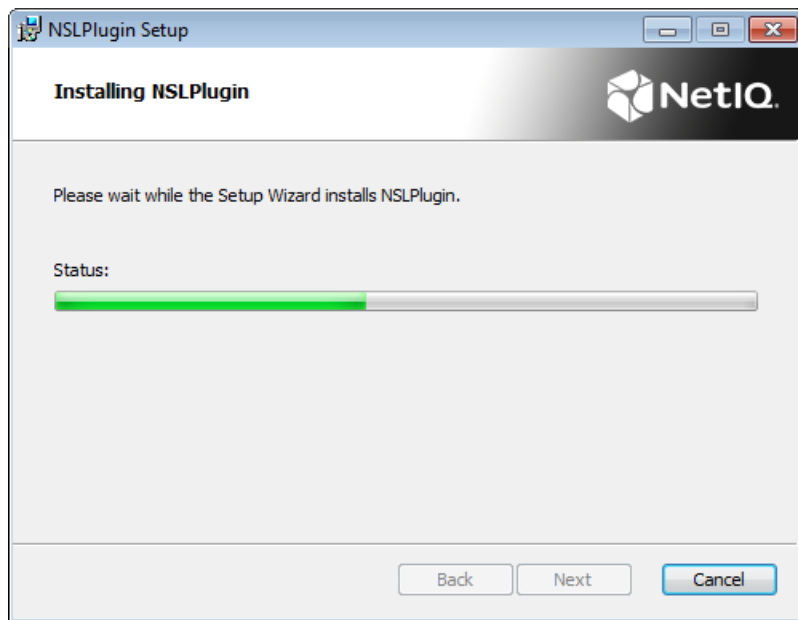
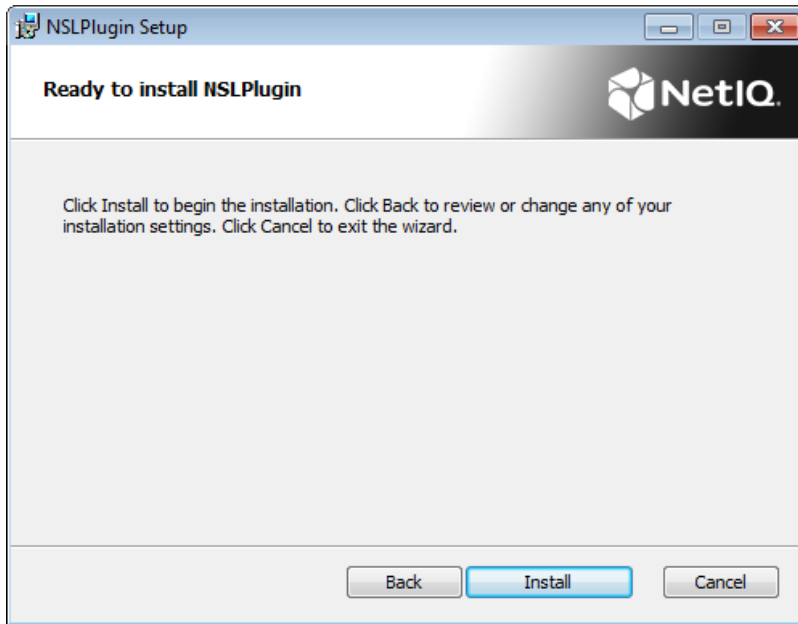
3. Read the **License agreement**. Select the **I accept the terms in the License Agreement** check box and click **Install**.

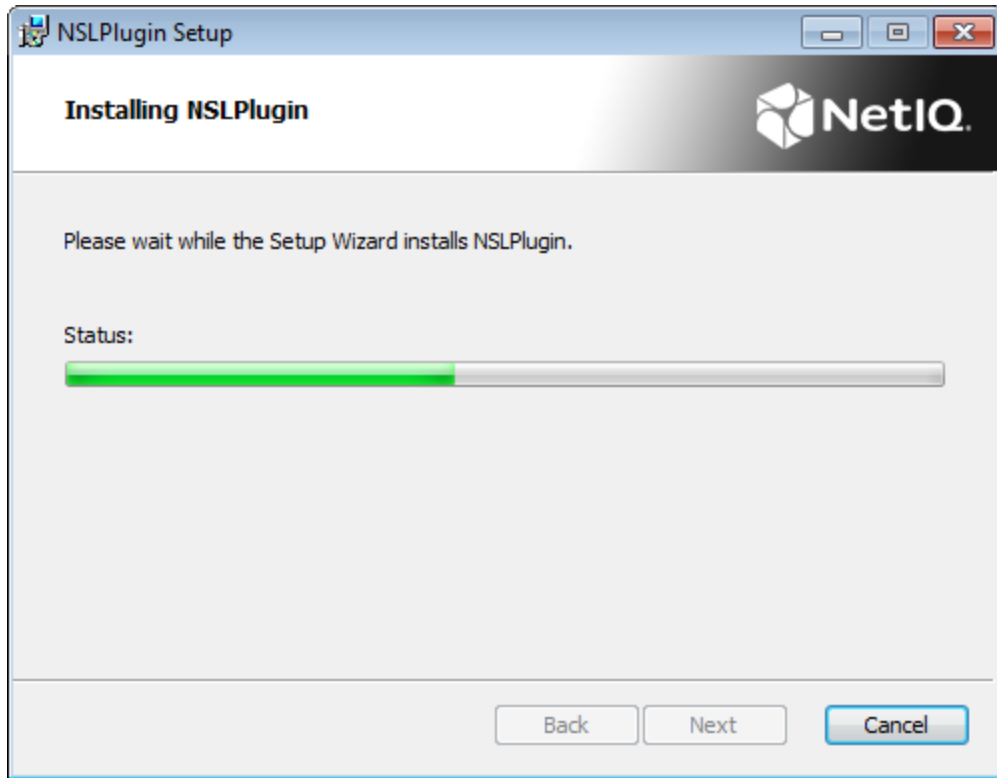


4. Click **Next** to install the default folder or click **Change** to choose another.

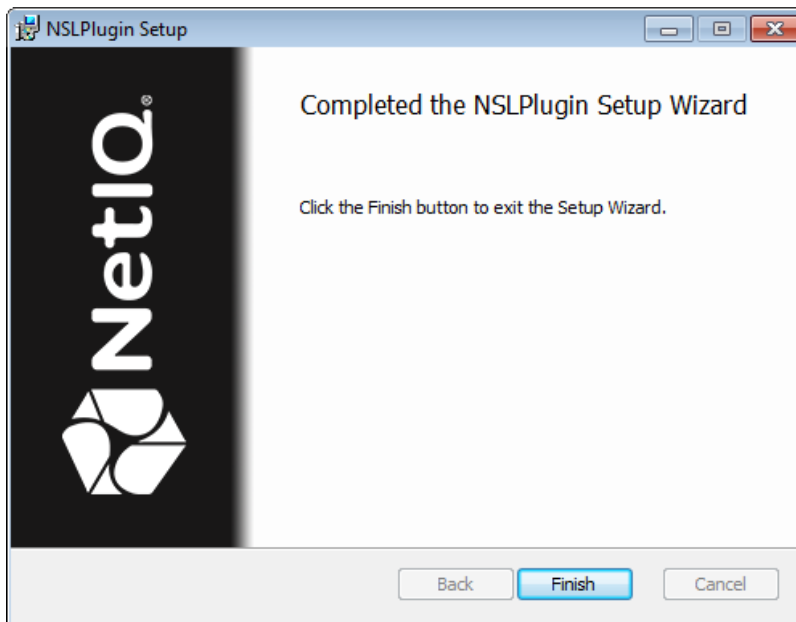


5. Click **Install** and wait until the components are installed.





6. Click **Finish** to close the Wizard.





## Removing NSL AA Plugin

To remove NSL AA Plugin, follow the steps:

1. In the **Start** menu, select **Control panel** and then double-click **Programs and Features**.
2. Select **NSLPlugin** and click **Uninstall**.
3. Confirm the removal.
4. Wait a few seconds until the removal is completed.

# Troubleshooting

**i** This chapter provides solutions for known issues. If you encounter any problems that are not mentioned here, please contact the support service.

## Cannot Install NSL AA Plugin

### Description:

Error appears when installing NSL AA Plugin on your computer.

### Cause:

- a. You are installing NSL AA Plugin on the network drive.
- b. You have no space left on the disk.
- c. You are installing NSL AA Plugin on the unsupported OS.
- d. You are installing NSL AA Plugin on the OS with the wrong bitness.

### Solution:

- a. Change the installation path.
- b. Free the amount of disk space needed for installation.
- c. Check the [System Requirements](#) chapter.
- d. Check your OS's bitness (x64/x86) and run the corresponding installer (x64/x86).

# Index

---

## A

Authentication 1, 3, 5  
Authenticator 3

## C

Client 5  
Control panel 9

## E

Error 10

## L

License 5  
Logon 3

## R

RTE 5

## S

System 4, 10

## W

Windows 7 4