



NetIQ SecureLogin - Advanced
Authentication Plugin
Configuration Guide

Version 5.1.0

Table of Contents

	1
Table of Contents	2
Introduction	3
About This Document	3
Configuration of NSL AA Plugin	4
Configuring SSO Authentication	4
BlankUsername	5
Enabling Kiosk Mode	5
Disable Choosing of Authentication Method	6
Index	7

Introduction


About This Document


Purpose of the Document


This NetIQ SecureLogin Advanced Authentication Plugin is intended for system administrators and describes the configuration of NetIQ SecureLogin Advanced Authentication Plugin and its integration with Novell Secure Login.

Document Conventions

This document uses the following conventions:

 **Warning.** This sign indicates requirements or restrictions that should be observed to prevent undesirable effects.

 **Important notes.** This sign indicates important information you need to know to use the product successfully.

 **Notes.** This sign indicates supplementary information you may need in some cases.

 **Tips.** This sign indicates recommendations.

- Terms are italicized, e.g.: ***Authenticator***.
- Names of GUI elements such as dialogs, menu items, and buttons are put in bold type, e.g.: the **Logon** window.

Configuration of NSL AA Plugin

NetIQ SecureLogin Advanced Authentication Plugin permits to use authenticators that are supported by NetIQ Advanced Authentication Framework instead of using a password for SSO authentication.

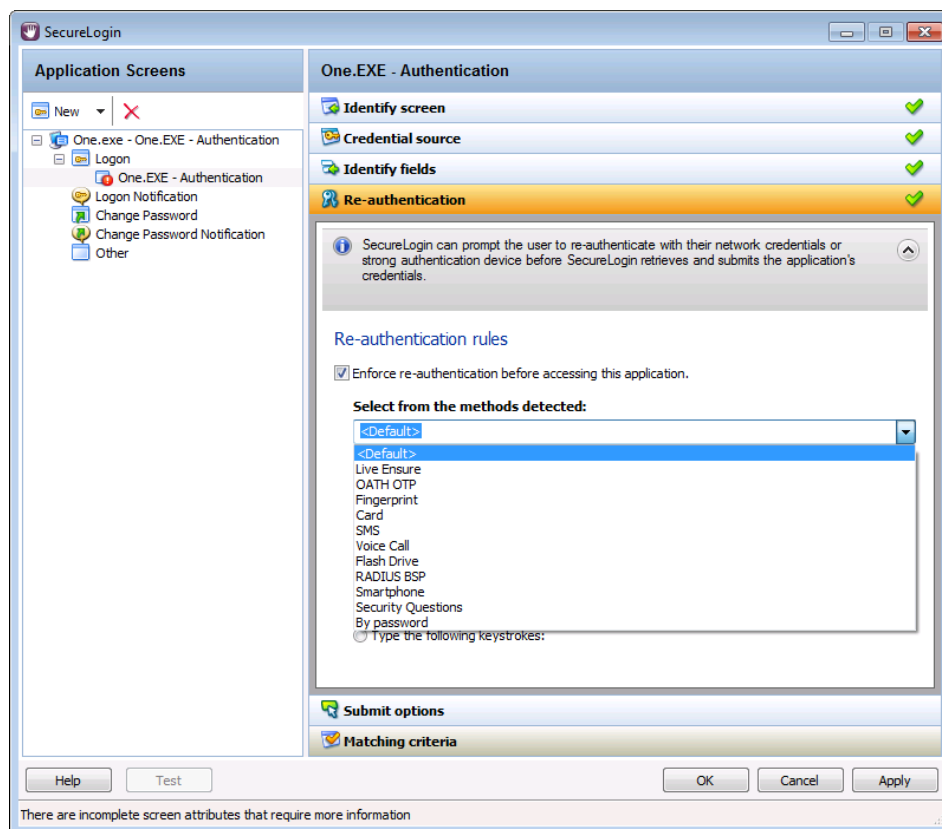
NSL AA Plugin supports 2 modes of operation:


- [Single Sign On \(SSO\) authentication in application](#)
- [Kiosk mode](#)

Configuring SSO Authentication

SecureLogin can prompt the user to re-authenticate with their network credentials or strong authentication device before SecureLogin retrieves and submit the applications credentials.

While adding the new application, click **Yes** at the **Re-authentication** step to enforce re-authentication and select one of methods of authentication:



 The list of the available methods of authentication depends on installed elements of Biometric Service Provider (BSP).

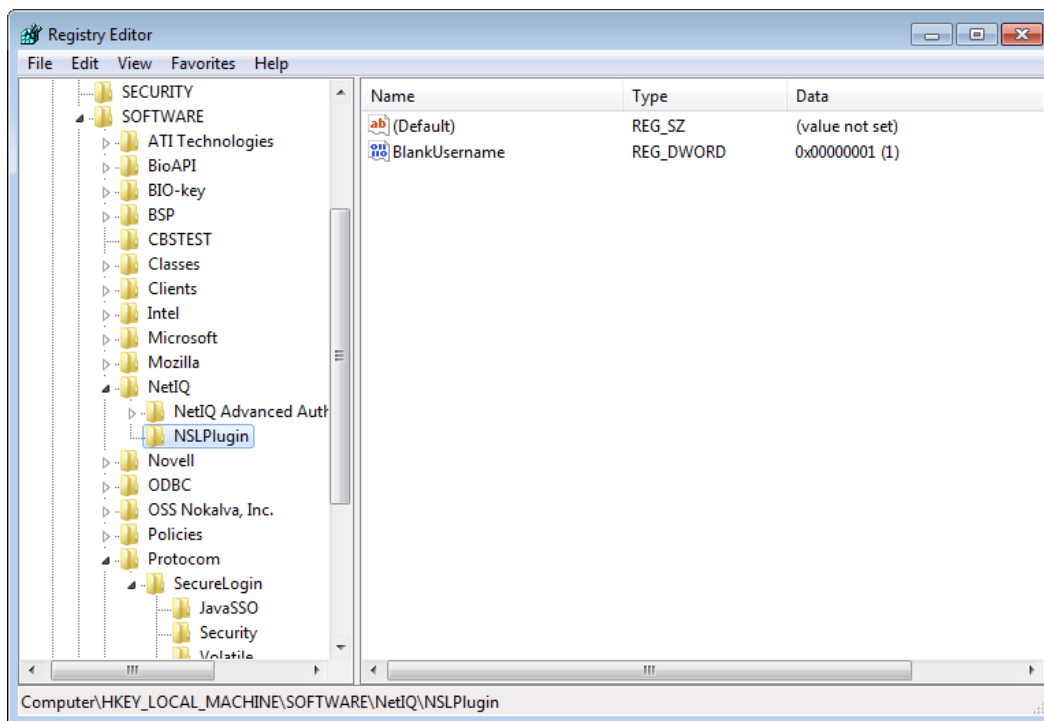
All other steps are reproduced as during the standardized procedure of adding an application.

Click **Apply** to save changes.

BlankUsername

The **BlankUsername** parameter is used when the username should not be saved in the NSL authentication window (it is not applied to reauthentication).

By default, the registry key for NSLPlugin and the BlankUsername parameter are not created in registry. If the username should not be saved, the registry key and parameter with value of 1 should be created.



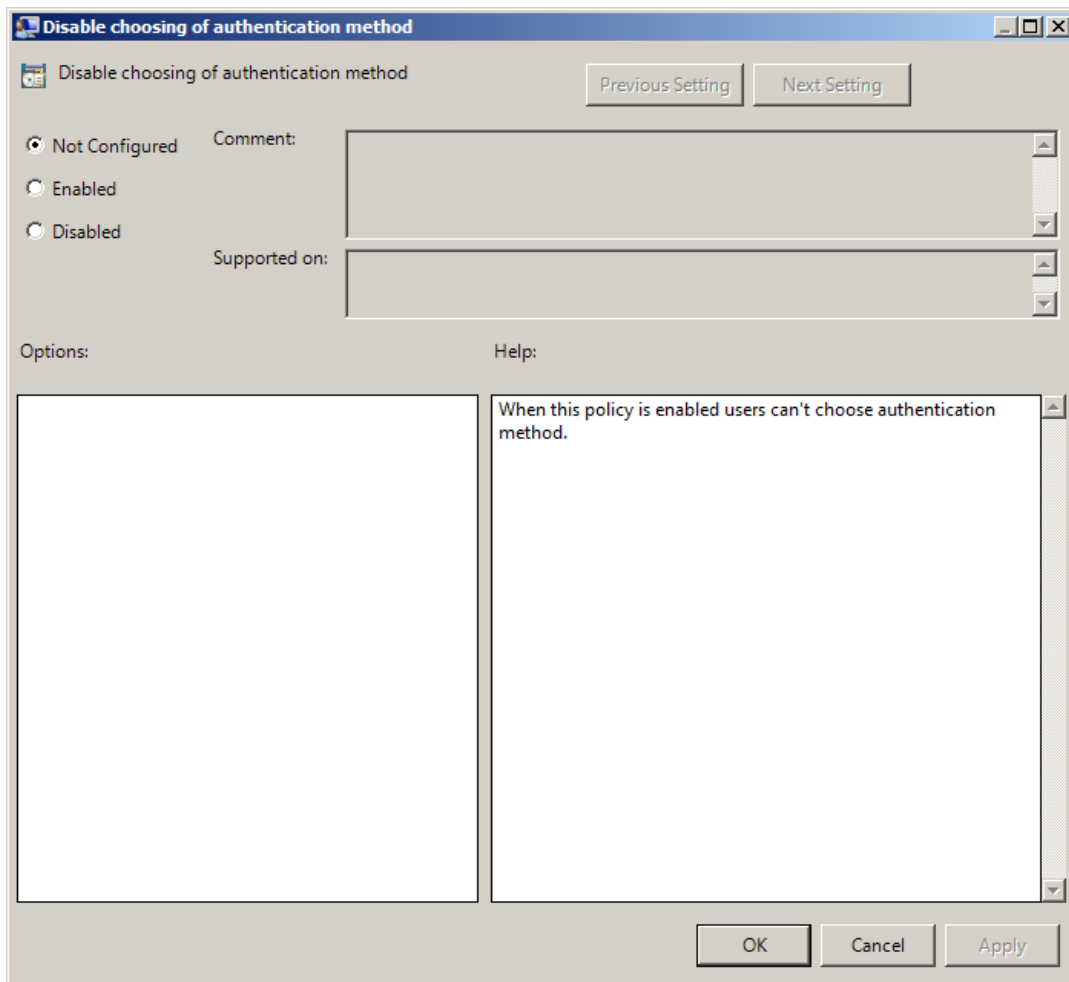
Enabling Kiosk Mode

To enable kiosk mode, create the following registry:

- Registry Path:HKEY_LOCAL_MACHINE\SOFTWARE\Protocom\SecureLogin
- Registry Type:DWORD
- Registry Name:NSLADAUTH
- Registry Value:1

Disable Choosing of Authentication Method

The **Disable choosing of authentication method** policy allows to forbid choosing an authentication method in Novell Secure Login Advanced authentication window.



i NSLPlugin.admx installs together with NSL AA plugin.

Index

A

Authentication 1, 3-4, 6
Authenticator 3

L

Logon 3