



NetIQ Advanced Authentication Framework

Email Authentication Provider User's Guide

Version 5.1.0

Table of Contents

	1
Table of Contents	2
Introduction	3
About This Document	3
Managing Email Authenticator	4
Microsoft Windows 7/Microsoft Windows Server 2008 R2	4
Microsoft Windows 8.1/Microsoft Windows Server 2012	7
Enrolling Email Authenticator	9
Re-enrolling Email Authenticator	12
Testing Email Authenticator	13
Removing Email Authenticator	15
Troubleshooting	16
Cannot Enroll Email Authenticator	16
Index	17
Glossary	18

Introduction

About This Document


Purpose of the Document


This Email Authentication Provider User's Guide is intended for all user categories and describes how to use the client part of NetIQ Advanced Authentication Framework solution. In particular, it gives instructions as for how to manage Email type of authentication.

For more general information on NetIQ Advanced Authentication Framework™ and the authentication software you are about to use, see NetIQ Advanced Authentication Framework – Client User's Guide.


Information on managing other types of authenticators is given in separate guides.

Document Conventions

 **Warning.** This sign indicates requirements or restrictions that should be observed to prevent undesirable effects.

 **Important notes.** This sign indicates important information you need to know to use the product successfully.

 **Notes.** This sign indicates supplementary information you may need in some cases.

 **Tips.** This sign indicates recommendations.

- Terms are italicized, e.g.: ***Authenticator***.
- Names of GUI elements such as dialogs, menu items, buttons are put in bold type, e.g.: the **Logon** window.

Managing Email Authenticator

In this chapter:

- [Microsoft Windows 7/Microsoft Windows Server 2008 R2](#)
- [Microsoft Windows 8.1/Microsoft Windows Server 2012](#)

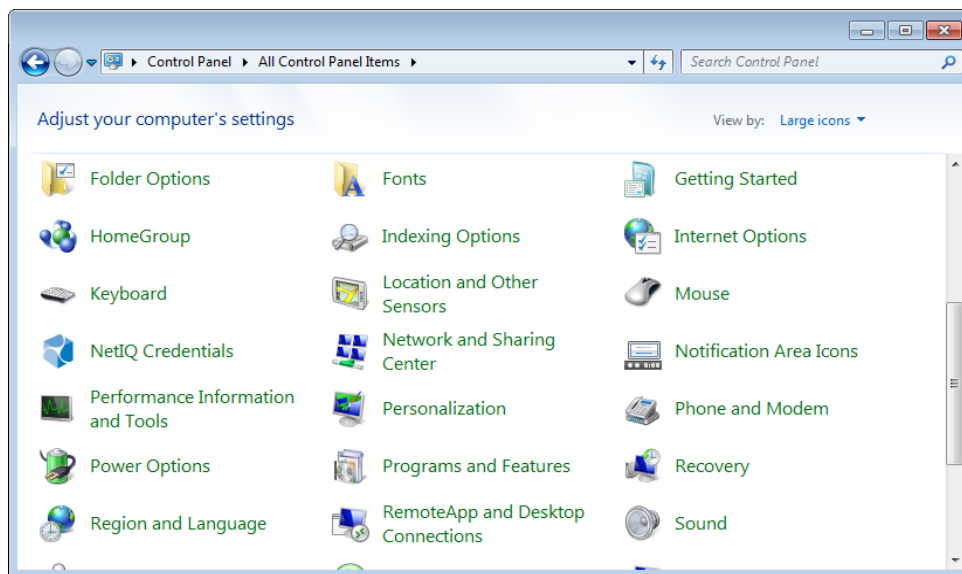
Microsoft Windows 7/Microsoft Windows Server 2008 R2

Authenticator management options are available in the **Authenticators** window.

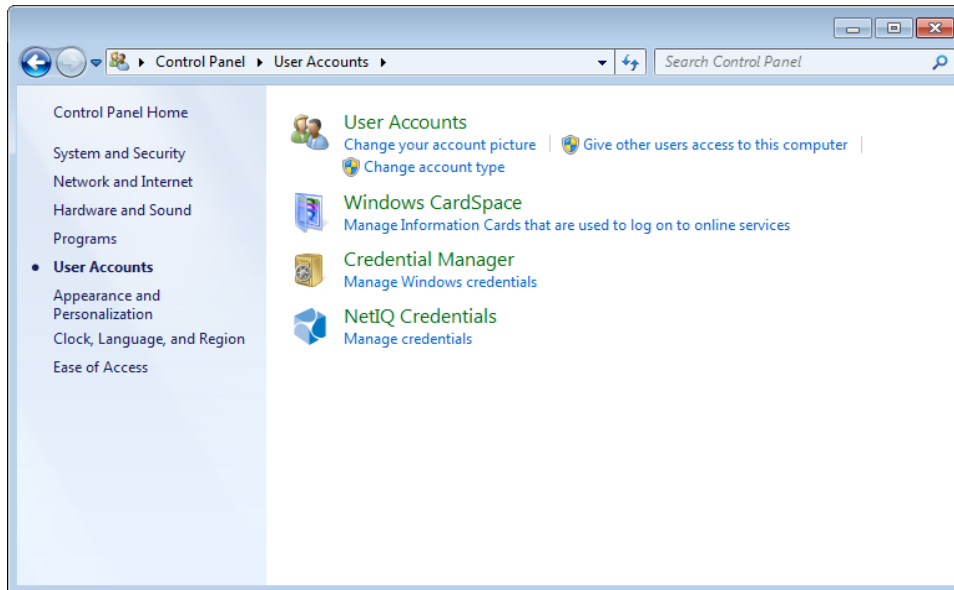
i The **Authentication Wizard** window is shown at system start if there are no enrolled authenticators.

To open the **Authenticators** window from **Control Panel**:

- In classic view of **Control Panel** select **NetIQ Credentials** item.




- In **Control Panel** by categories select **User Accounts > NetIQ Credentials**.



To open **Authenticators** window, user should undertake authorization procedure:

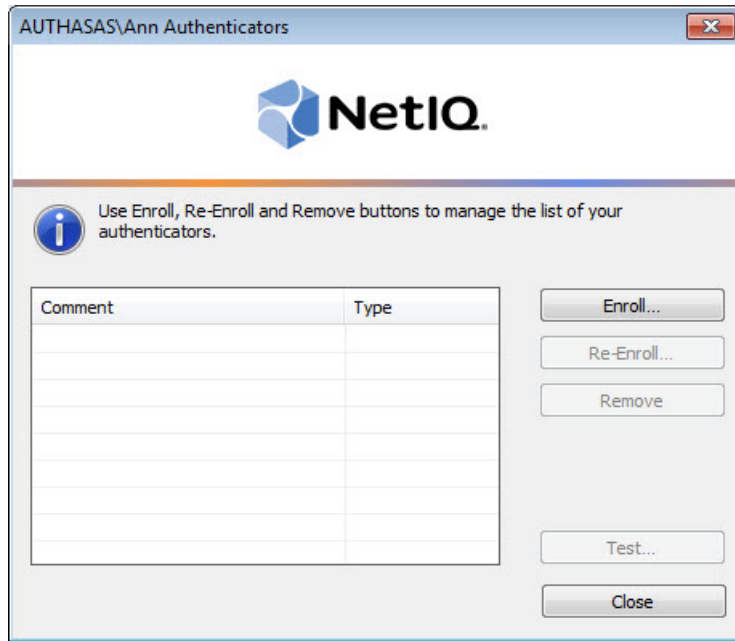
1. In the **Authorization** window, choose authentication method.

 If there are no enrolled authenticators, then the only way to get authorized is **By password**. Otherwise, authentication by password will make enrollment unavailable (i.e. the button **Enroll**, **Re-enroll** and **Remove** will be greyed out).



2. Get authenticated with the selected method.

3. Once you are authenticated, page for managing authenticators is opened.

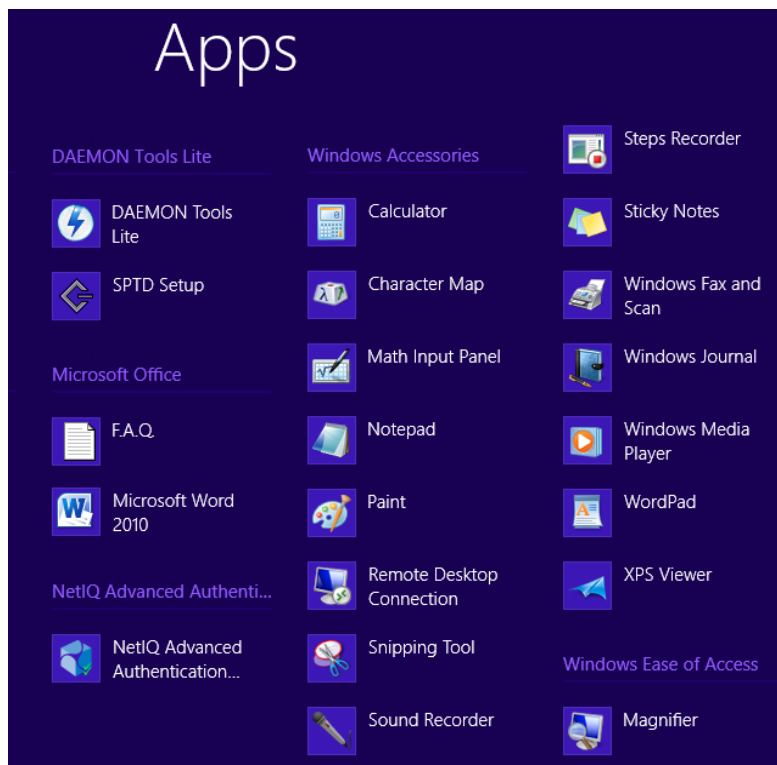


Microsoft Windows 8.1/Microsoft Windows Server 2012

Authenticator management options are available in the **Authenticators** window.


The **Authentication Wizard** window is shown at system start if there are no enrolled authenticators.

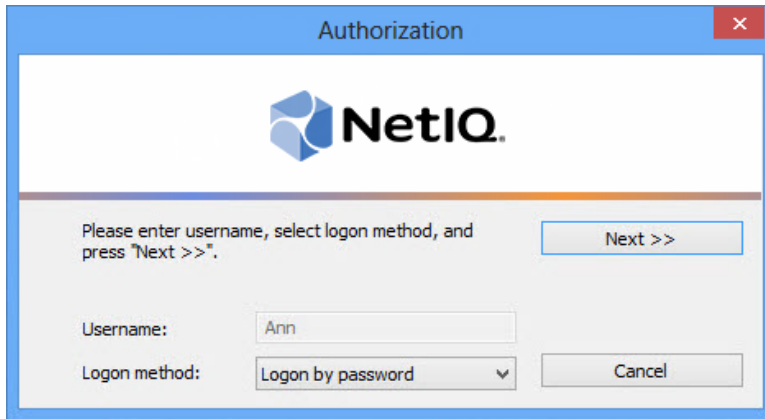
To open the **Authenticators**, in the **Search** menu select **Apps > NetIQ Advanced Authentication Framework...**



To open **Authenticators** window, user must undertake authorization procedure.

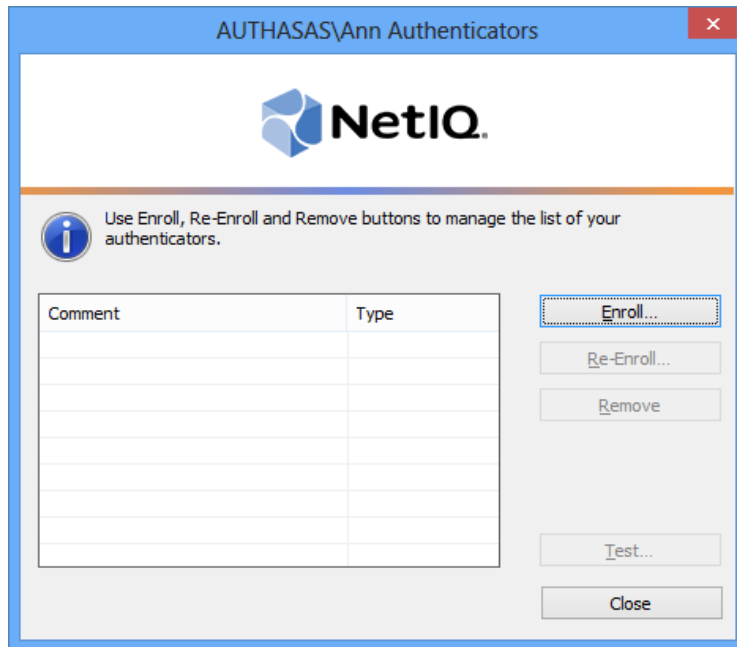
1. In the **Authorization** window, choose authentication method.

 If there are no enrolled authenticators, then the only way to get authorized is **By password**. Otherwise, authentication by password will make enrollment unavailable (i.e. the button **Enroll**, **Re-enroll** and **Remove** will be greyed out).





2. Get authenticated with the selected method.

3. Once you are authenticated, page for managing authenticators is opened.



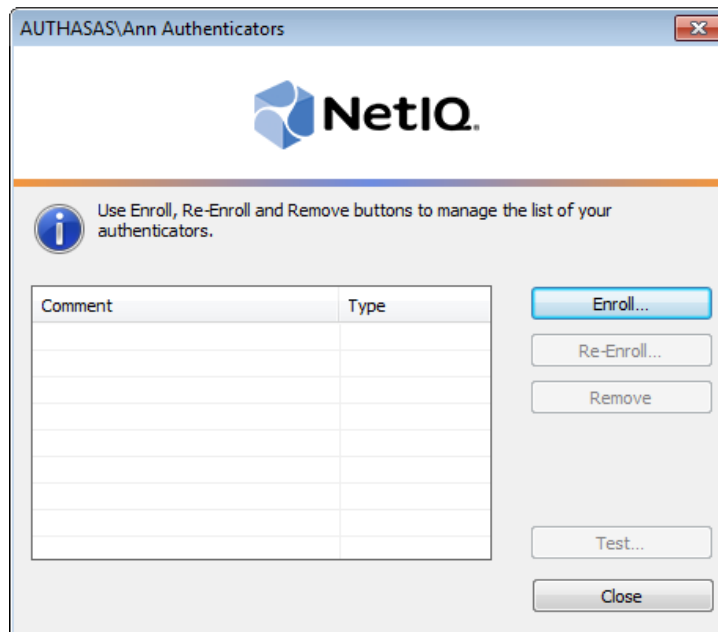
Enrolling Email Authenticator

 This operation may be forbidden by NetIQ administrator. In such cases the **Enroll** button in the **Authenticators** window is greyed out.

 NetIQ administrator defines the maximum number of authenticators you can have which means you cannot enroll any more authenticators once you have reached the limit.

To enroll an Email authenticator:

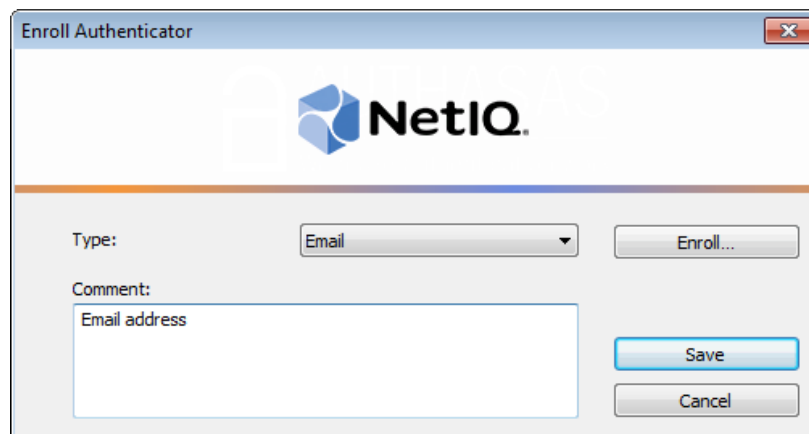
1. Click the **Enroll** button in the **Authenticators** window.




2. When the **Enroll Authenticator** window appears, select **Email** from the **Type** drop-down menu, click **Enroll**.

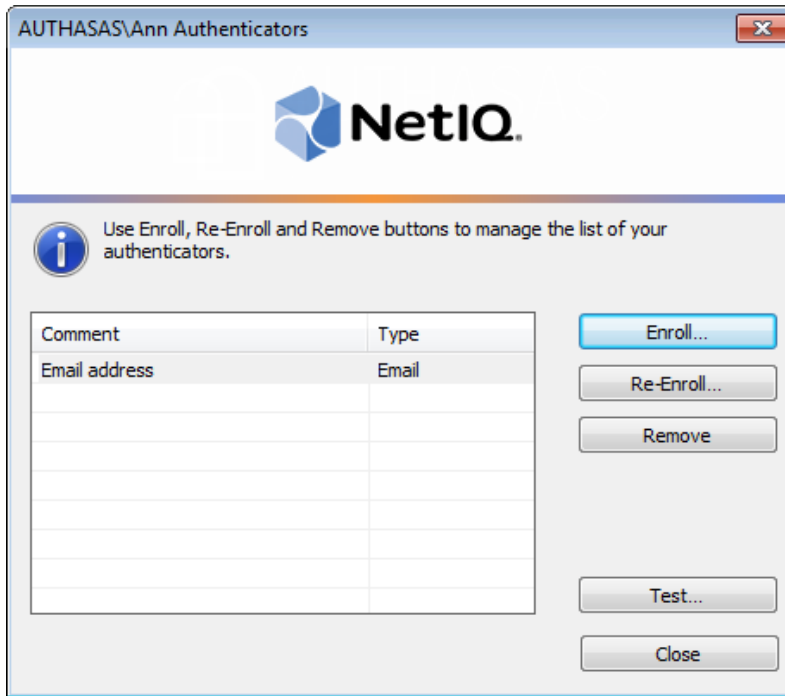


3. Control is passed to the **Enroll Authenticator** window. Entering commentary is optional. Click **Save**.




 Entering and editing comments may be forbidden by the system administrator.

4. A new authenticator is created and is visible in the list of authenticators in the **Authenticators** window.

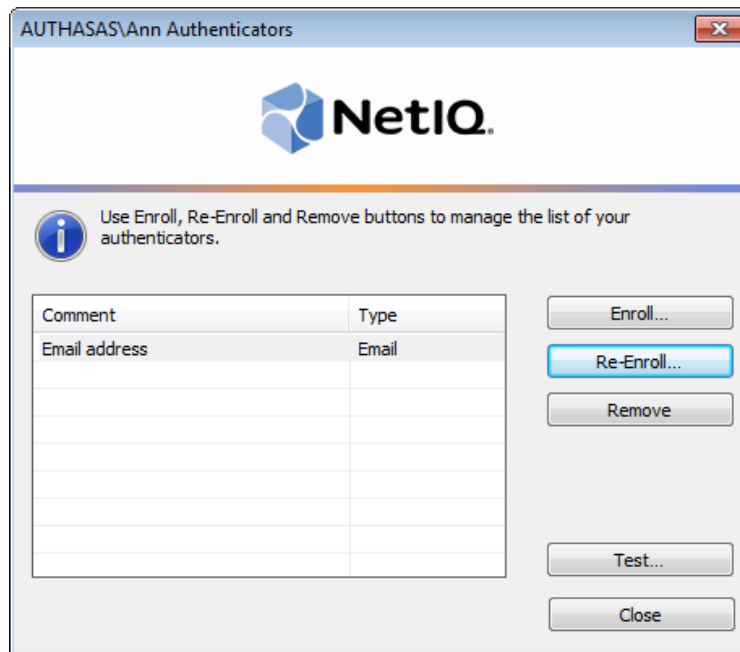


Re-enrolling Email Authenticator

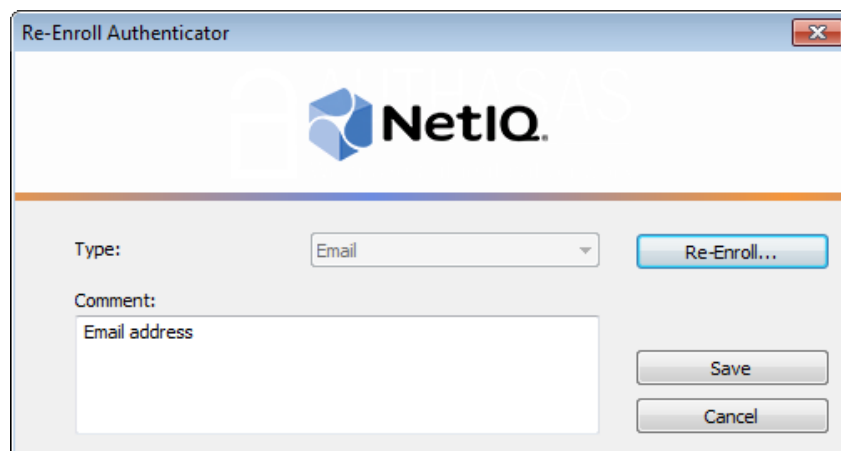
 This operation may be forbidden by NetIQ administrator. In such cases the **Re-Enroll** button in the **Authenticators** window is greyed out.

In order to re-enroll a created Email authenticator:

1. Select **Email** in the list of authenticators, click **Re-Enroll** in the **Authenticators** window.



2. Click **Re-Enroll** in the **Re-Enroll Authenticator** window.

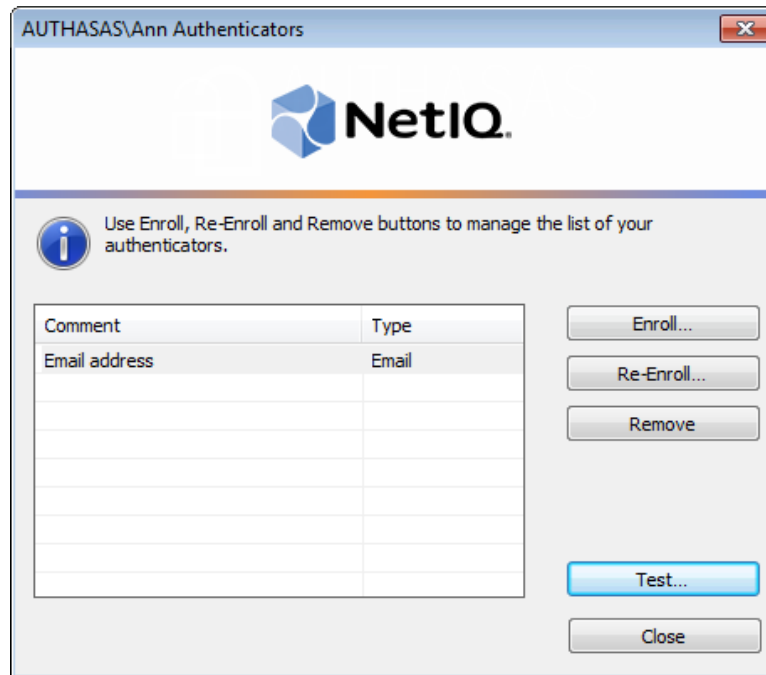


3. Fulfill the steps as during your initial enrollment process.

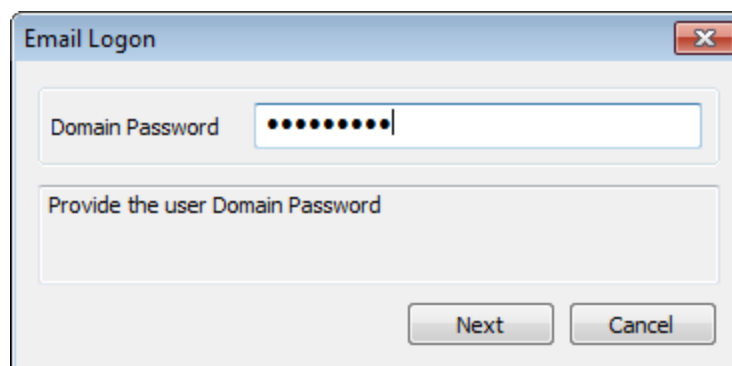
Testing Email Authenticator

To test a created Email authenticator:

1. Click **Test** in the **Authenticators** window.



2. The **Email Logon** window will be displayed. Enter your domain password. Click **Next**.




3. When a confirmation message saying: "Authenticators match" appears, click **OK**.





4. When authenticators do not match an error message appears. Click **OK**.



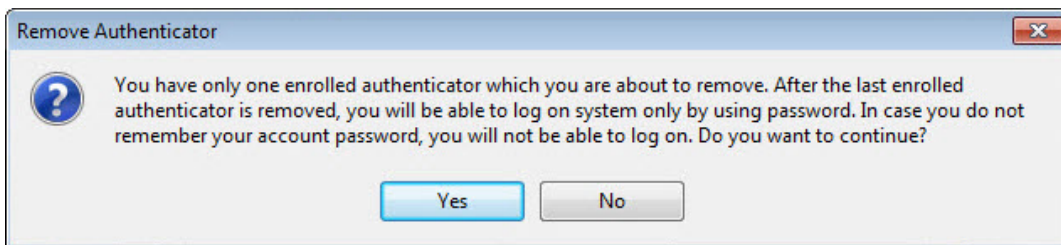
Removing Email Authenticator

 This operation may be forbidden by the NetIQ administrator. In such cases the **Remove** button in the **Authenticators** window is greyed out.

 If you are allowed to remove your authenticator, do not do this just because you do not like your current authenticator. Instead, you can re-enroll it (see [Re-enrolling Email Authenticator](#)).


 Do not remove the only authenticator you have. If you have no authenticators, you can log on with your password only. If a random password was generated for your account and you have removed the only authenticator, you cannot log on in any way.

NetIQ Advanced Authentication Framework™ prevents you from accidentally removing your only authenticator by showing the following dialog:



If you removed the only authenticator and do not know your password, contact the system administrator.

Troubleshooting

 This chapter provides solutions for known issues. If you encounter any problems that are not listed here, please contact the technical support service.

In this chapter:

- [Cannot Enroll Email Authenticator](#)

Cannot Enroll Email Authenticator

Description:

Authenticator is not enrolled because:

- The **Type** list in the **Enroll Authenticators** window is empty or Email authenticator type is absent.
- The **Enroll** button in the **Authenticators** window is greyed out.

Cause:

- The Email authenticator type is not supported (no proper authentication provider is installed).
- The operation is forbidden or you have reached the limit on authenticators number.

Solution:

- Contact NetIQ administrator.
- No authenticators can be added. For more information, contact NetIQ administrator.

Index

A

Authentication 1, 3-4, 7, 15
Authenticator 3-4, 7, 9, 12-13, 15-16

C

Client 3
Control 4, 10

E

Enroll 5, 7, 12, 16

L

Logon 3, 13

R

Re-enroll 5, 7
Remove 5, 7, 15

U

User 1, 4

W

Windows 7 4
Windows 8 4, 7

Glossary

M

My Term

My definition