



NetIQ Advanced Authentication Framework

Digital Persona Authentication Provider User's Guide

Version 5.1.0

Table of Contents

	1
Table of Contents	2
Introduction	3
About This Document	3
Managing Digital Persona Fingerprint Authenticator	4
Microsoft Windows 7	4
Microsoft Windows 8.1	7
Enrolling Digital Persona Fingerprint Authenticator	9
Re-enrolling Digital Persona Fingerprint Authenticator	13
Testing Digital Persona Fingerprint Authenticator	14
Removing Digital Persona Fingerprint Authenticator	16
Logon Using Digital Persona Authentication Provider	18
Troubleshooting	22
Cannot Enroll Authenticator	23
Index	24

Introduction

About This Document


Purpose of the Document


This Digital Persona Authentication Provider User's Guide is intended for all user categories and describes how to use the client part of NetIQ Advanced Authentication Framework solution. In particular, it gives instructions as for how to manage (enroll, re-enroll, test) fingerprint authenticators if you have Digital Persona reader.

For more general information on NetIQ Advanced Authentication Framework™ and the authentication software you are about to use, see NetIQ Advanced Authentication Framework – Client User's Guide.


Information on managing other types of authenticators is given in separate guides.

Document Conventions

 **Warning.** This sign indicates requirements or restrictions that should be observed to prevent undesirable effects.

 **Important notes.** This sign indicates important information you need to know to use the product successfully.

 **Notes.** This sign indicates supplementary information you may need in some cases.

 **Tips.** This sign indicates recommendations.

- Terms are italicized, e.g.: ***Authenticator***.
- Names of GUI elements such as dialogs, menu items, buttons are put in bold type, e.g.: the **Logon** window.

Managing Digital Persona Fingerprint Authenticator

? Please select your operating system in the list below:

- [Microsoft Windows 7](#)
- [Microsoft Windows 8.1](#)

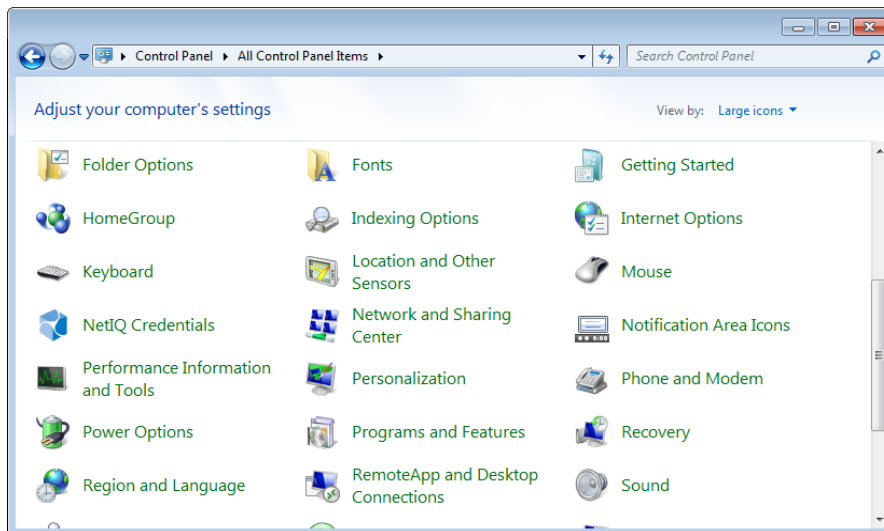
Microsoft Windows 7

Authenticator management options are available in the **Authenticators** window.

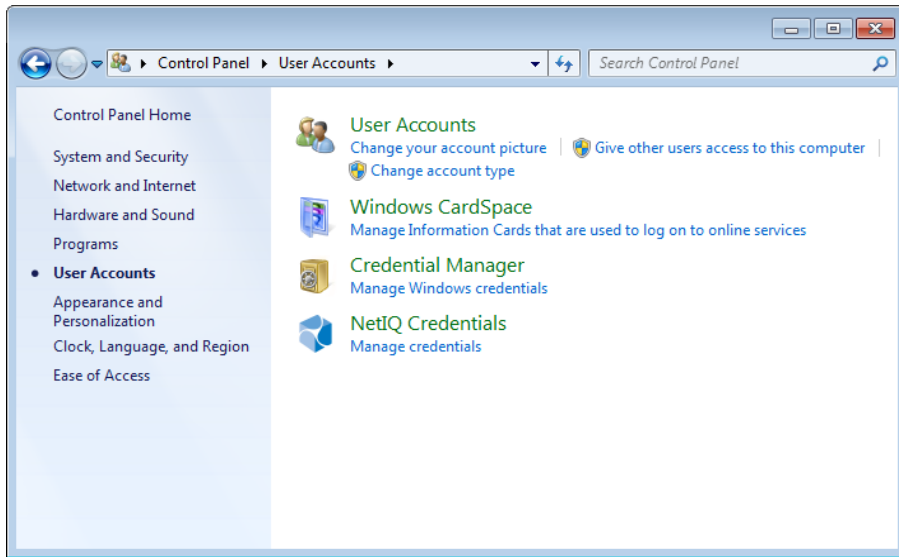
i The **Authentication Wizard** window is shown at system start if there are no enrolled authenticators.

To open the **Authenticators** window from **Control Panel**:

- In classic view of **Control Panel** select **NetIQ Credentials** item.




- In **Control Panel** by categories select **User Accounts > NetIQ Credentials**.



To open **Authenticators** window, user should undertake authorization procedure:

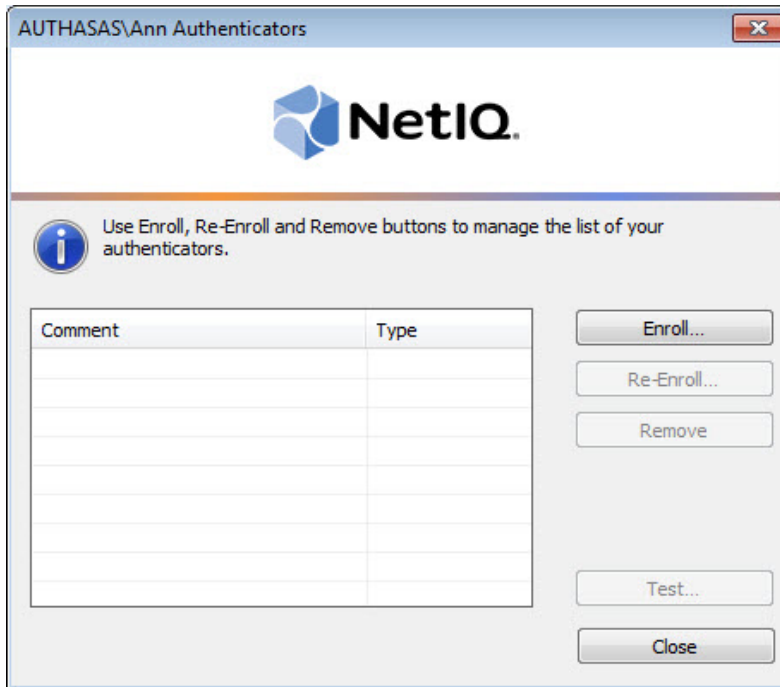
1. In the **Authorization** window, choose authentication method.

 If there are no enrolled authenticators, then the only way to get authorized is **By password**. Otherwise, authentication by password will make enrollment unavailable (i.e. the button **Enroll**, **Re-enroll** and **Remove** will be greyed out).



2. Get authenticated with the selected method.

3. Once you are authenticated page for managing authenticators is opened.

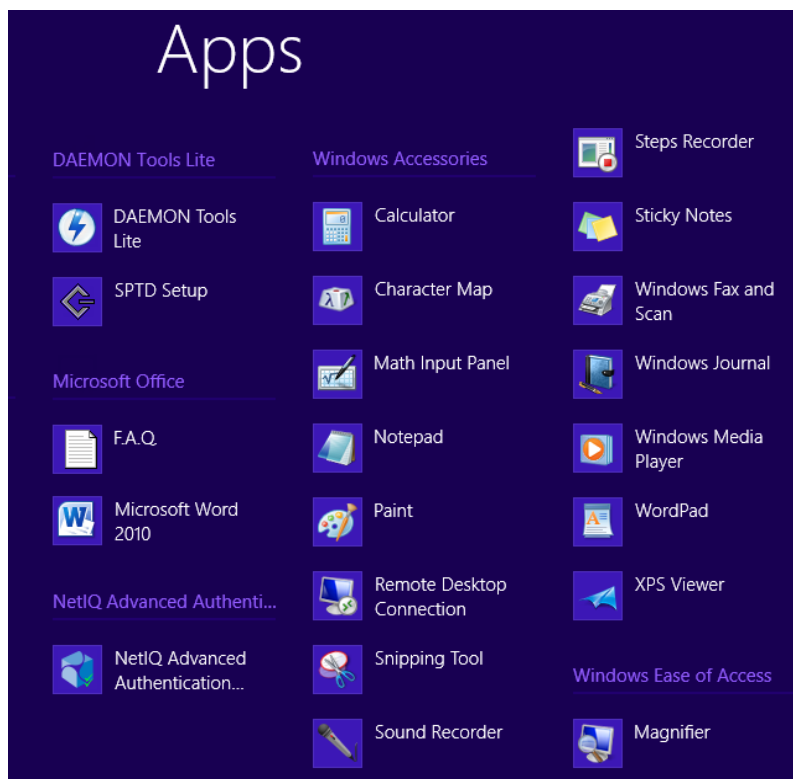


Microsoft Windows 8.1

Authenticator management options are available in the **Authenticators** window.

i The **Authentication Wizard** window is shown at system start if there are no enrolled authenticators.

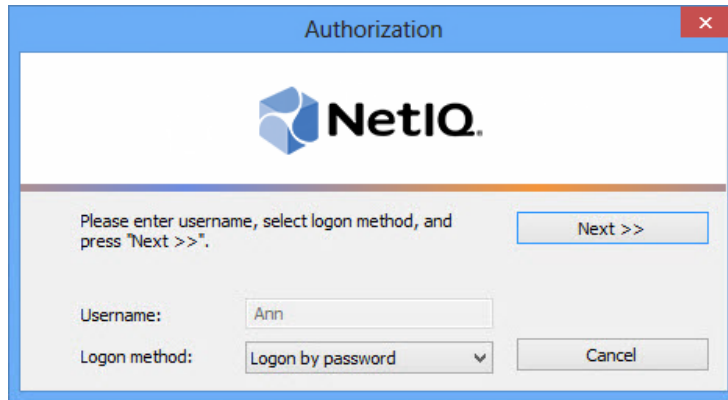
To open the **Authenticators**, in the **Search** menu select **Apps > NetIQ Advanced Authentication Framework...**



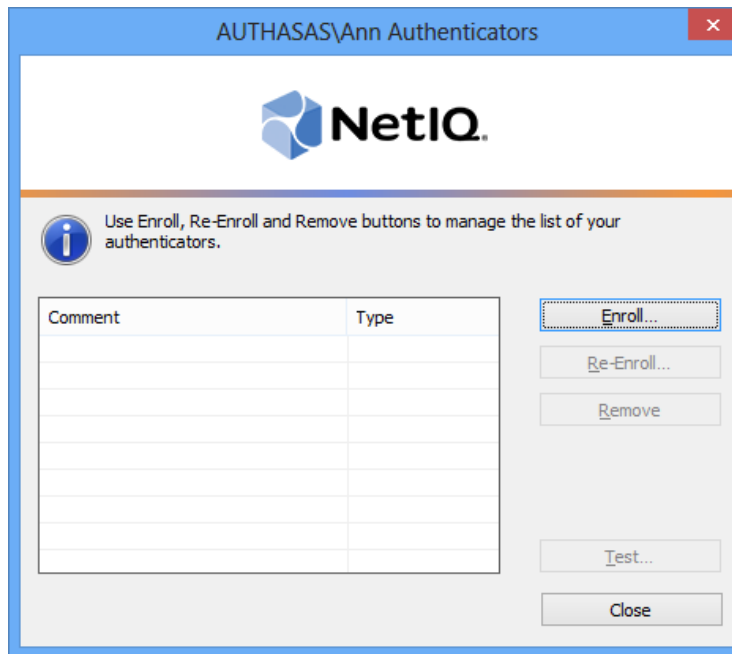
To open **Authenticators** window, user must undertake authorization procedure:

1. In the **Authorization** window, choose authentication method.

***** If there are no enrolled authenticators, then the only way to get authorized is **By password**. Otherwise, authentication by password will make enrollment unavailable (i.e. the button **Enroll**, **Re-enroll** and **Remove** will be greyed out).



2. Get authenticated with the selected method.
3. Once you are authenticated page for managing authenticators is opened.



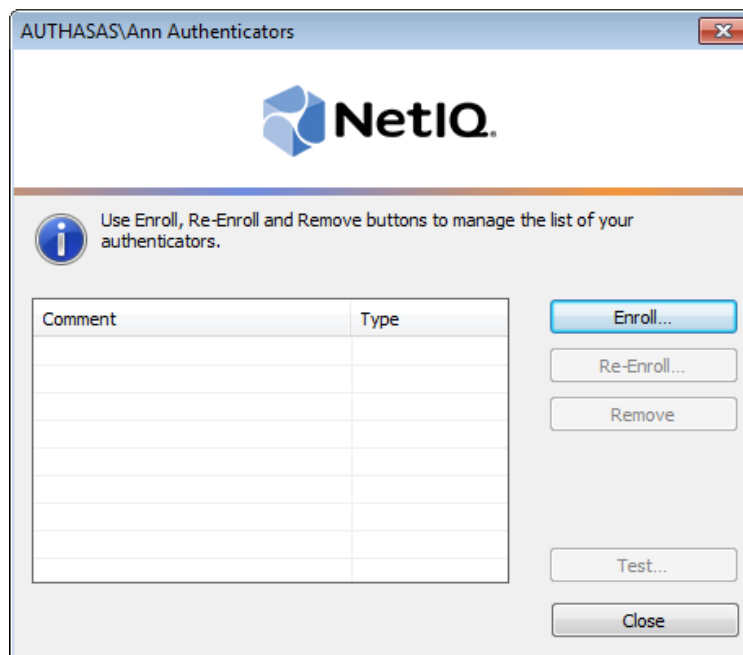
Enrolling Digital Persona Fingerprint Authenticator

* This operation may be forbidden by NetIQ administrator. In such cases the **Enroll** button in the **Authenticators** window is greyed out.

* NetIQ administrator defines the maximum number of authenticators you can have which means you cannot enroll any more authenticators once you have reached the limit.

To enroll a Digital Persona fingerprint authenticator:

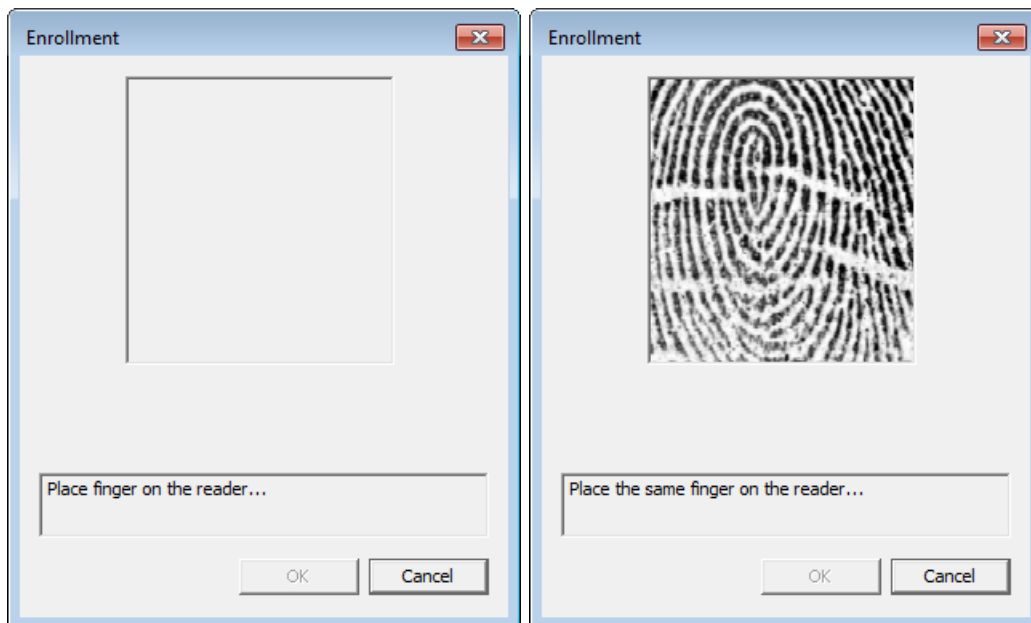
1. Click the **Enroll** button in the **Authenticators** window.




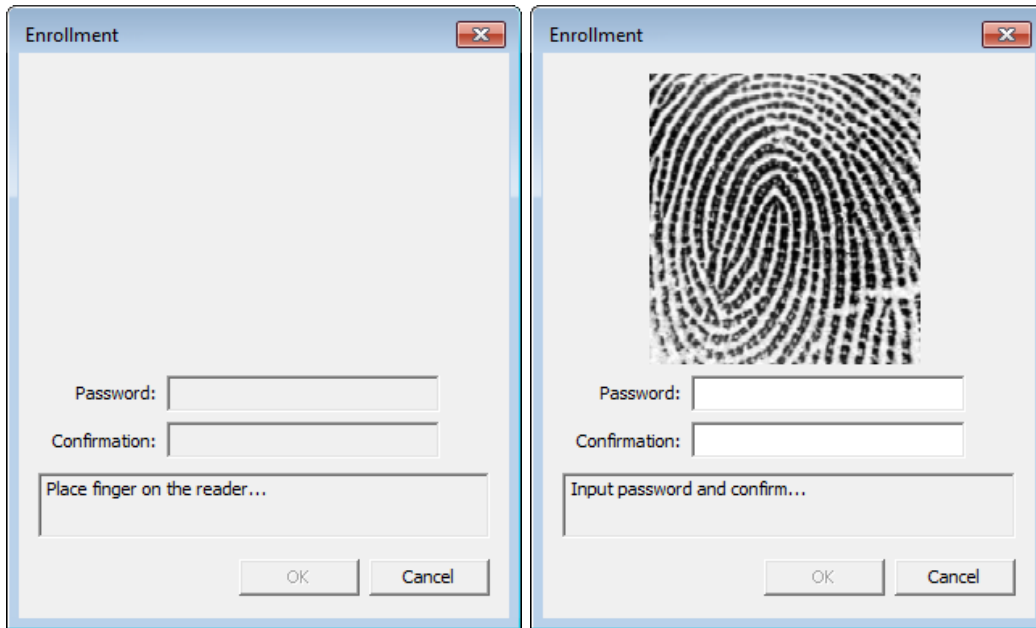
2. When the **Enroll Authenticator** window appears, select **Fingerprint** from the **Type** drop-down menu, click **Enroll**.



3. Select the finger to enroll. Place the finger you selected on the reader until the wizard gives you confirmation.

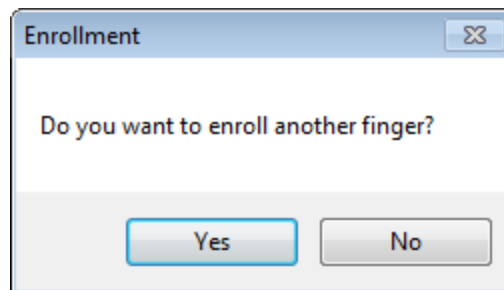



 If the **PIN required** policy is enabled, it will be required to enter a PIN code/domain password besides your fingerprint (it depends on the configuration of the **Domain password as PIN** policy).



 The **Password** and the **Confirmation** fields are inactive until the fingerprint is enrolled.

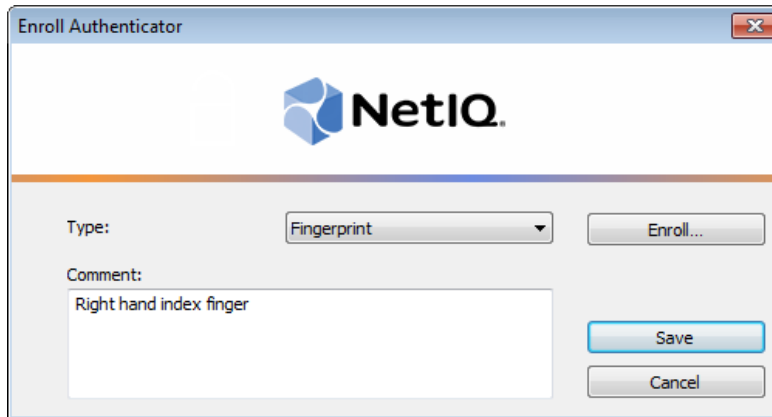
4. To enroll another finger, click **Yes**. To finish the enrollment process, click **No**.



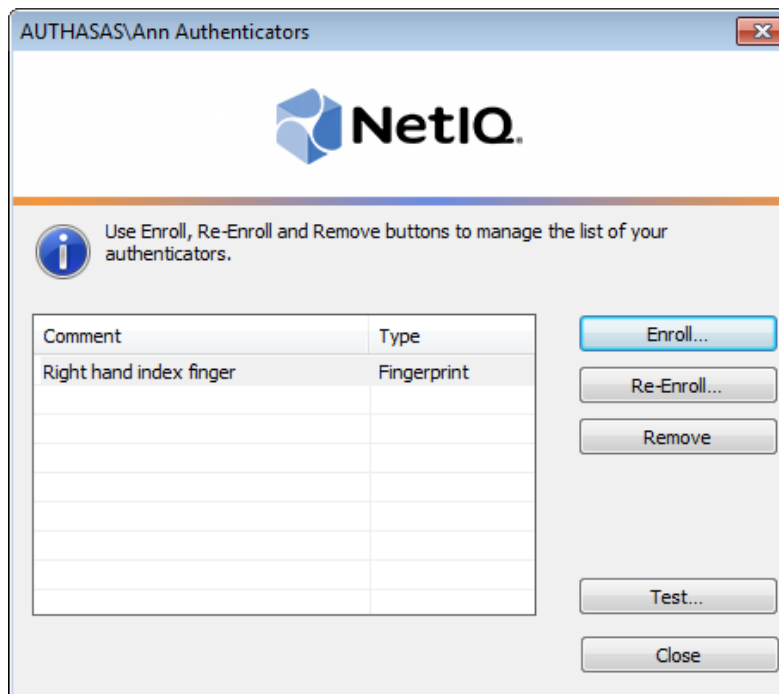
 Any enrolled finger can be used during authentication process.

5. Finish the enrollment process. Click **OK**.


6. Control is passed to the **Enroll Authenticator** window. Entering commentary is optional. Click **Save**.



7. A new authenticator is created and is visible in the list of authenticators in the **Authenticators** window.

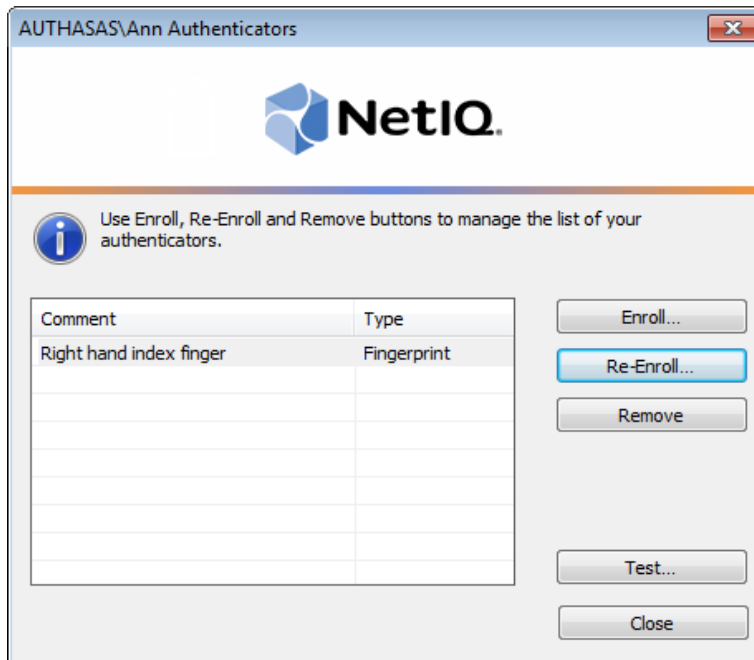


Re-enrolling Digital Persona Fingerprint Authenticator

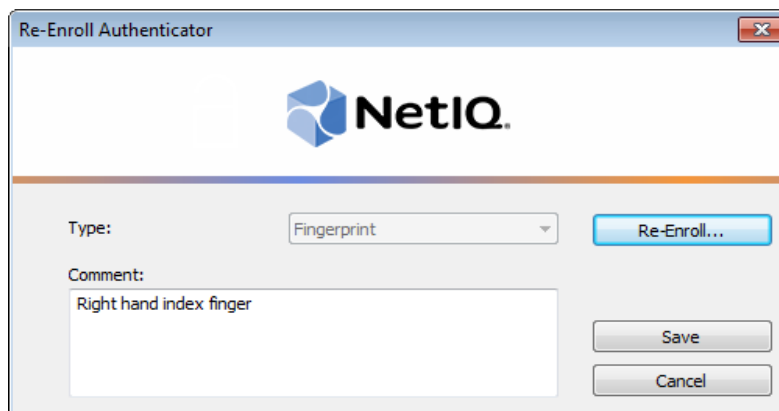
 This operation may be forbidden by NetIQ administrator. In such cases the **Re-Enroll** button in the **Authenticators** window is greyed out.

In order to re-enroll a created Digital Persona fingerprint authenticator:

1. Select **Fingerprint** in the list of authenticators, click **Re-Enroll** in the **Authenticators** window.



2. Click **Re-Enroll** in the **Re-Enroll Authenticator** window.

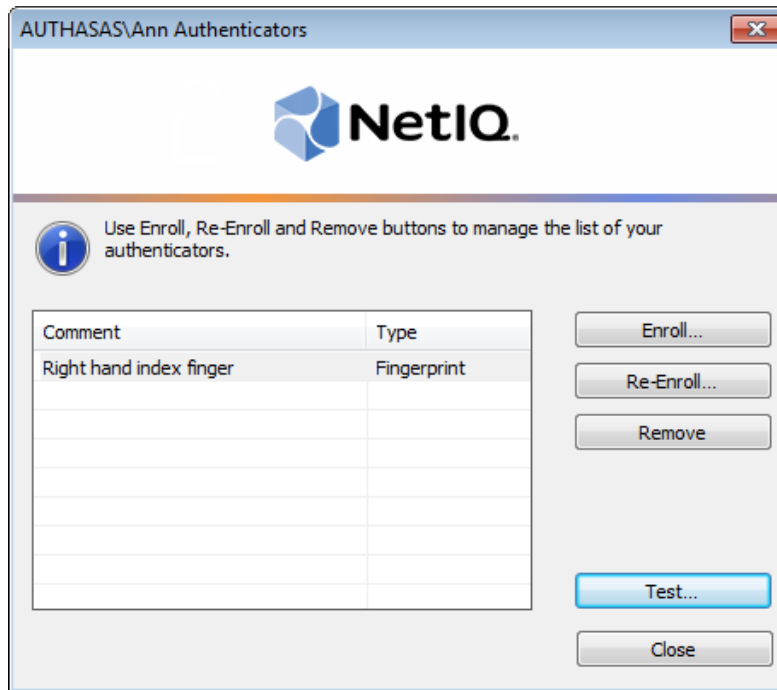


3. Fulfill the steps as during your initial enrollment process.

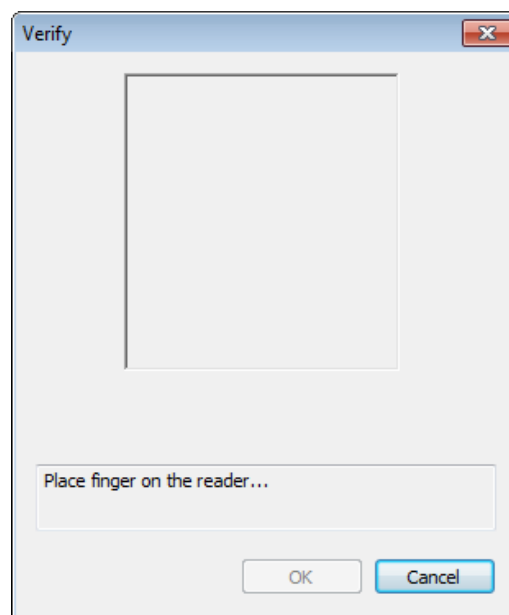
Testing Digital Persona Fingerprint Authenticator


To test a created Digital Persona fingerprint authenticator:

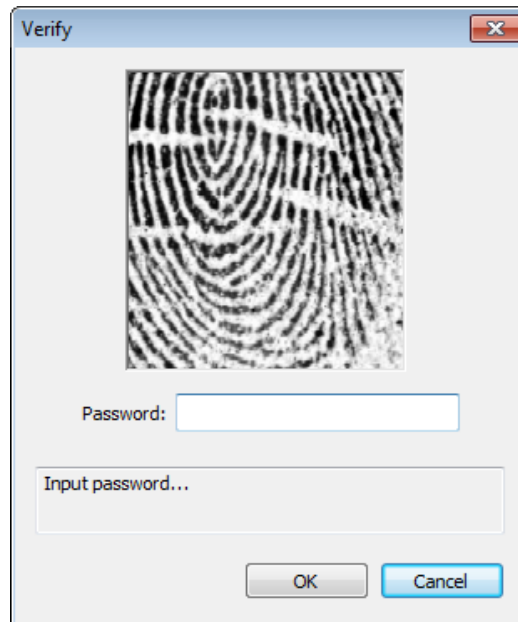
1. Click **Test** in the **Authenticators** window. Place finger on the reader.



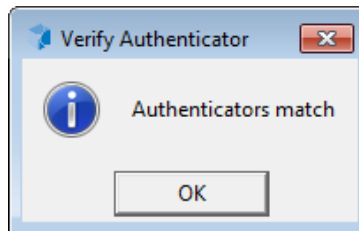
2. Place your finger on the reader.



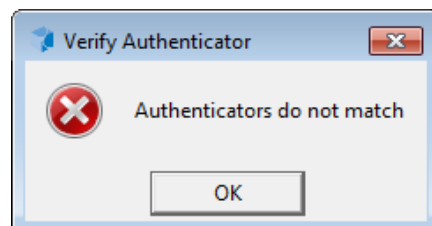
 If the **PIN required** policy is enabled, it will be required to enter a PIN code/domain password besides your fingerprint (it depends on the configuration of the **Domain password as PIN** policy).



3. When a confirmation message saying: *"Authenticators match"* appears, click **OK**.



4. When authenticators do not match an error message appears. Click **OK**.



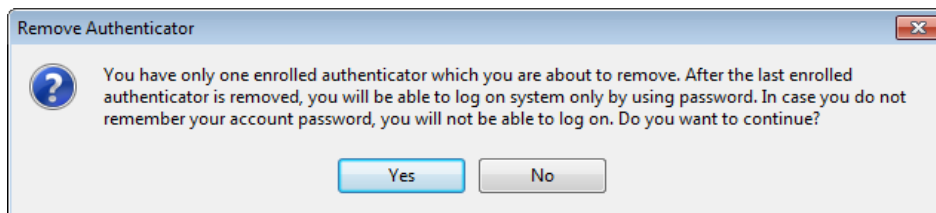
Removing Digital Persona Fingerprint Authenticator

* This operation may be forbidden by NetIQ administrator. In such cases the **Remove** button in the **Authenticators** window is greyed out.

* If you are allowed to remove your authenticator, do not do this just because you do not like your current authenticator. Instead, you can re-enroll it (see [Re-enrolling Digital Persona Fingerprint Authenticator](#)).

! Do not remove the only authenticator you have. If you have no authenticators, you can log on with your password only. If a random password was generated for your account and you have removed the only authenticator, you cannot log on in any way.

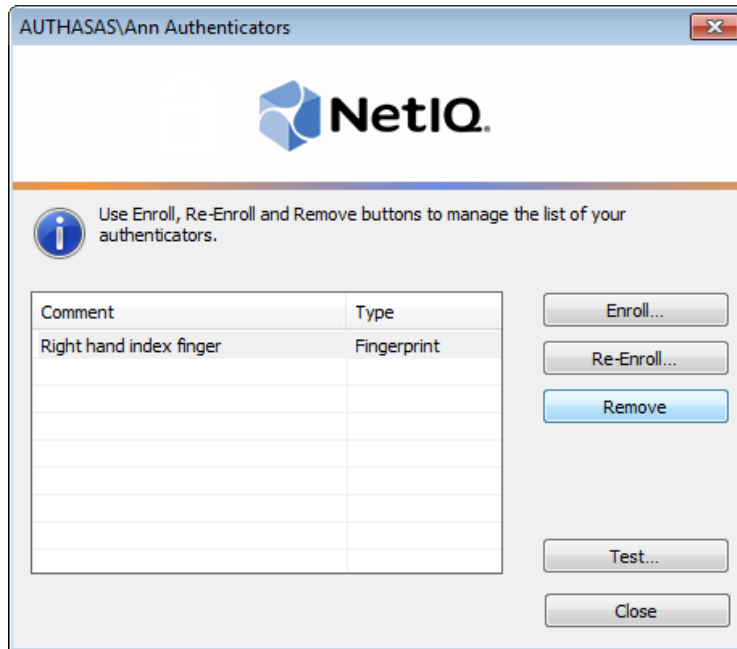
NetIQ Advanced Authentication Framework™ prevents you from accidentally removing your only authenticator by showing the following dialog:



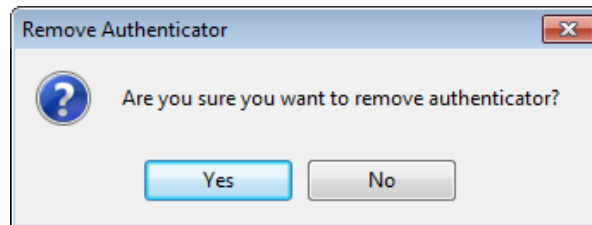
If you removed the only authenticator and do not know your password, contact NetIQ administrator.

To remove an authenticator:

1. Click **Remove** in the **Authenticators** window.



2. If you have two or more authenticators enrolled a dialog box saying: "Are you sure you want to remove authentication?" appears. Click **Yes**.

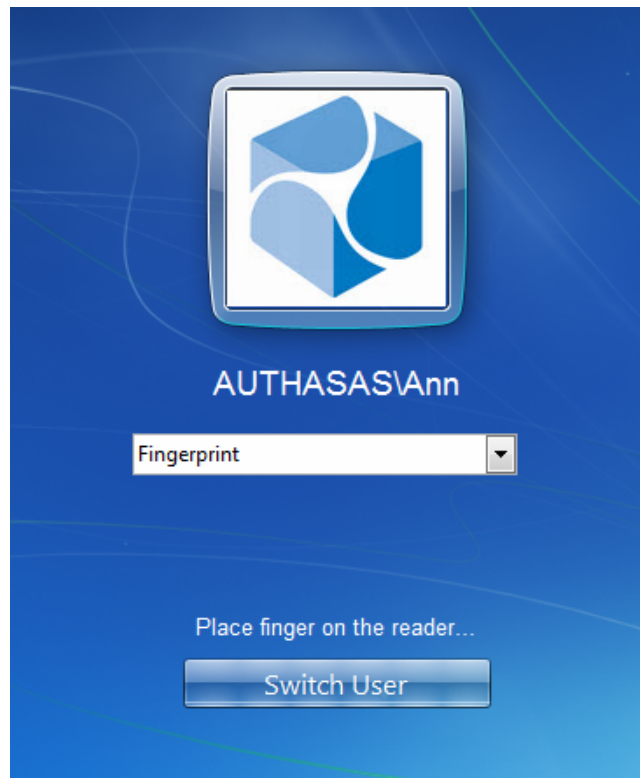


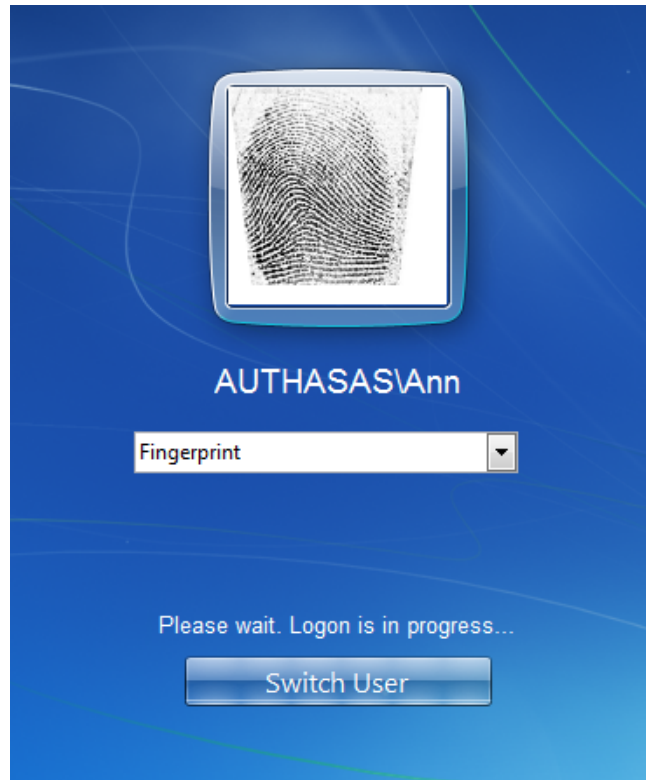
The authenticator will be removed from the list of your authenticators.


Logon Using Digital Persona Authentication Provider

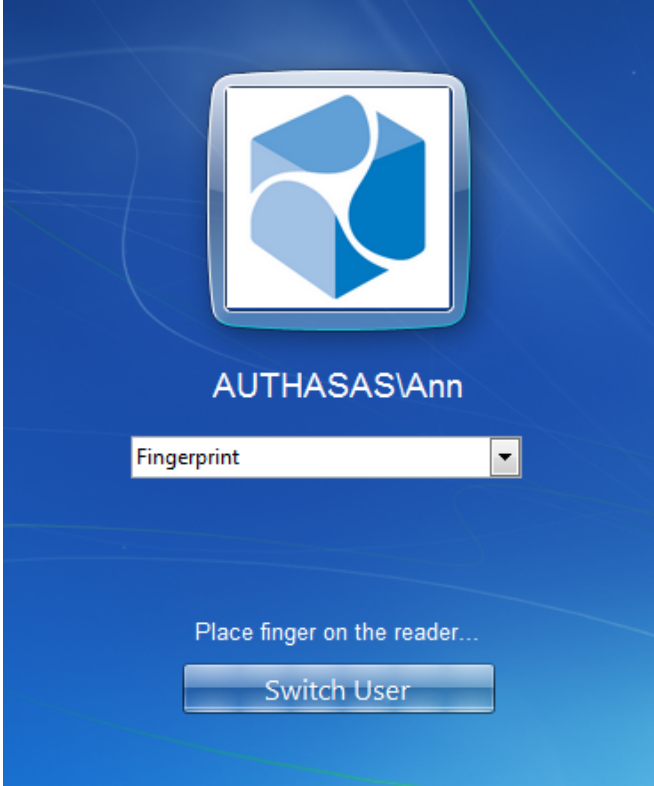
To log on using Digital Persona authentication provider:

1. Start your computer. From logon screen, press **[Ctrl]+[Alt]+[Del]**.
2. If you want to select another user, click **Switch User**.
3. Select your user name if available or click **Other User**.
4. Type your user name (not needed unless **User** has been already selected).
5. Select **Fingerprint** as a logon method. Enter place your finger on the reader.






 If the **PIN required** policy is enabled, it will be required to enter a PIN code/domain password besides your fingerprint (it depends on the configuration of the **Use domain password as PIN** policy).



6. If your fingerprint and PIN code/domain password match the enrolled one, you will log on successfully.

Troubleshooting

 This chapter provides solutions for known issues. If you encounter any problems that are not listed here, please contact the technical support service.

Before contacting the support service:

We strongly request that you give a possibly detailed description of your problem to the support technicians and attach logs from the faulty computer. To obtain the logs, use the LogCollector.exe tool (\Tools\LogCollector). Follow the steps below:

1. Copy LogCollector.exe to the local C:\ disk on the faulty computer.

 The tool may not work from a network drive.

2. Run LogCollector.exe.

3. In the dialog that opens, click **Enable all**. As a result, all items in the **Debugged components** section are selected. Close the dialog.

4. Reproduce the steps that caused the problem.

5. Run LogCollector.exe. again and click **Save logs**.

Save the logs to archive.

Cannot Enroll Authenticator

Description:

Authenticator is not enrolled because:

- a. The authentication device is not functioning.
- b. The **Type** list in the **Enroll Authenticators** window is empty or fingerprint authenticator type is absent.
- c. The **Enroll** button in the **Authenticators** window is greyed out.

Cause:

- a. The reader is unplugged, out of order or the proper drivers are not installed.
- b. The fingerprint authenticator type is not supported (no Digital Persona fingerprint authenticator provider is installed).
- c. The operation is forbidden or you have reached the limit on authenticators' number.

Solution:

- a. Make sure the reader is plugged in. Refer to device manual. If the device seems out of order, contact NetIQ administrator.
- b. Contact NetIQ administrator.
- c. No authenticators can be added. For more information, contact NetIQ administrator.

Index

A

Authentication 1, 3-4, 7, 16
Authenticator 3-4, 7, 23

C

Client 3
Control 4, 11

D

Domain 10, 15

E

Enroll 5, 7, 13, 23

F

Fingerprint 4, 9, 13-14, 16, 18

L

Logon 3, 18

P

Password 11
PIN 10, 15, 19

R

Remove 5, 7, 16

U

User 1, 4, 18

W

Windows 7 4
Windows 8 4, 7