



NetIQ Advanced Authentication
Framework - Virtual Desktop
Authentication (VDA) Profile Editor

Administrator's Guide

Version 5.1.0

Table of Contents

	1
Table of Contents	2
Introduction	3
About This Document	3
System Requirements	4
Configuration of NetIQ Advanced Authentication Framework VDA Profile Editor	5
Launcher	7
RDP	7
Citrix	8
VMware View	10
Kiosk Mode Settings	11
Enabled	12
VDA Admins Group	12
Quit Hotkey	12
Enable App Filtering	12
Web Service	13
Troubleshooting	14
Problem with Running VDA Profile Editor	14
Index	15

Introduction

About This Document


Purpose of the Document


This Virtual Desktop Authentication Profile Editor Administrator's Guide is intended for system administrators and describes how to configure NetIQ Advanced Authentication Framework VDA Profile Editor.

For more information about NetIQ Advanced Authentication Framework software, see NetIQ Advanced Authentication Framework Administrative Tools Administrator's Guide.


Document Conventions

This document uses the following conventions:

 **Warning.** This sign indicates requirements or restrictions that should be observed to prevent undesirable effects.


 **Important notes.** This sign indicates important information you need to know to use the product successfully.

 **Notes.** This sign indicates supplementary information you may need in some cases.

 **Tips.** This sign indicates recommendations.

- Terms are italicized, e.g.: ***Authenticator***.
- Names of GUI elements such as dialogs, menu items, and buttons are put in bold type, e.g.: the **Logon** window.

System Requirements

 Installing and removing this product requires **Local Administrator** privileges.

Before installing the product, check that the following system requirements are fulfilled:


- Microsoft Windows 7 SP1 (x64/x86)
- Microsoft Windows Server 2008 R2
- Microsoft .NET Framework 4.5

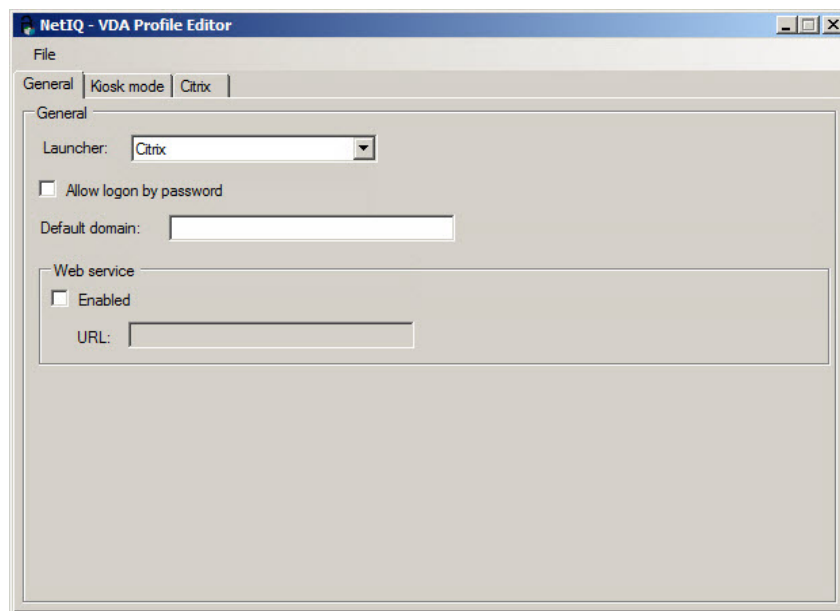
Configuration of NetIQ Advanced Authentication Framework VDA Profile Editor

NetIQ VDA Profile Editor is included to NetIQ Advanced Authentication Framework from version 4.9. It is located in \Tools\VDA Profile Editor\ of distributive kit's folder.

In this chapter:

- [Launcher](#)
- [Kiosk mode settings](#)
- [Web Service](#)


 When all necessary settings are configured, save the file with the following extension: **.profile** on the machine with installed NetIQ VDA Shell. Profile can be opened with the **Profile List Editor**.



The **General** tab of VDA Profile Editor contains the following fields:

- The **Launcher** dropdown provides with a capability to select an applicable module.
- The **Allow logon by password** checkbox provides with a capability to logon by password.
- The **Default domain** text field allows to enter an applicable domain name format that will be used as a default one. The default domain name should be specified in the NetBIOS format.

- The **Enabled** checkbox enables Web Service support for non-domain clients/thin clients (should be enabled mandatory).
- The **URL** textfield contains an applicable Web service address in the following format:
https://server.authasas.local:8232/service.svc/bsc.

 Multiple Web Service addresses can be specified in the **URL** text field using a semicolon.
E.g., *https://server1.authasas.local:8232/service.svc/bsc;https://server2.authasas.local:8232/service.svc/bsc.*

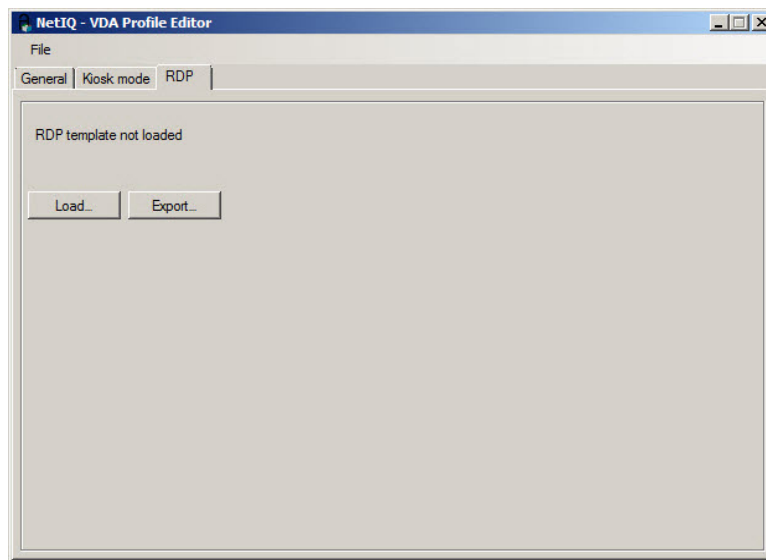
Launcher


NetIQ VDA Profile Editor includes **Launcher** module. **Launcher** allows to choose which module NetIQ VDA works. The following modules are available:

- [RDP](#)
- [Citrix](#)
- [VMware View](#)

RDP

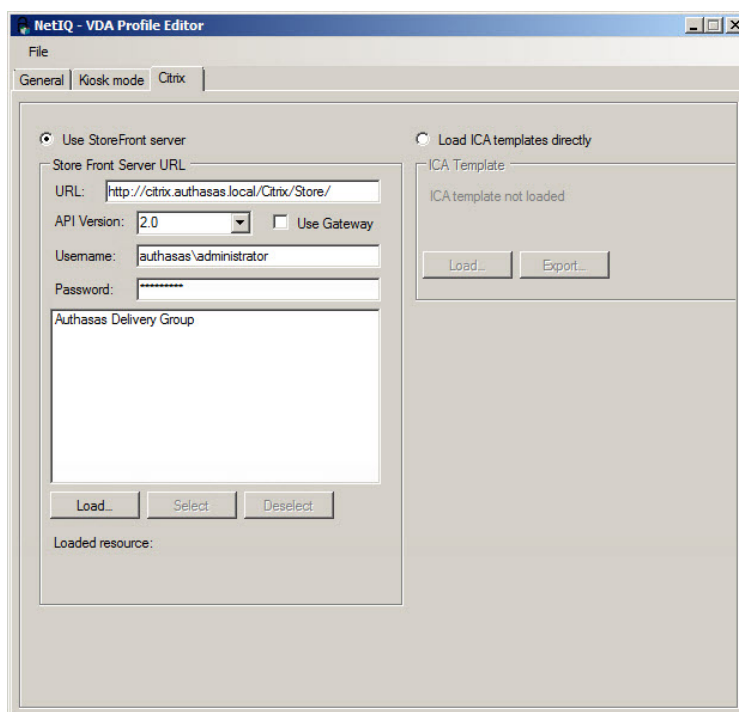
RDP – integration with Remote Desktop Connection. It is also required to specify an existing RDP template on the **RDP** tab.



 The **HTTP Basic** authentication method should be enabled in the **Authentication** view of the **Citrix StoreFront** console.

 FIDO U2F authentication provider is not supported by Citrix.

Citrix – integration with Citrix Web Interface.



If the **Use StoreFront server** option is selected, all fields of the **Store Front Server URL** section will be enabled. The fields are the following:

- The **URL** text field is used to log in to StoreFront in order to access the list of available resources. The **URL** text field should contain:
 - for API version 2.0 - /Citrix/Store/
 - for API version 2.5 - /Citrix/StoreWeb/
- The **API Version** dropdown provides with a capability to select an applicable API Version. If NetScaler is not used, both API version 2.0 or API version 2.5 can be selected. NetScaler requires only API version 2.5.
- The **Use Gateway** checkbox enables the usage of gateway. It should be selected only for NetScaler.

- The **Username** textfield is used to log in to StoreFront in order to access the list of applicable resources.
- The **Password** textfield is used to log in to StoreFront in order to access the list of applicable resources.
- The **Description** text box contains information for the current configuration (if applicable).
- The **Load** button reads applicable resources.
- The **Select** button selects an applicable resource.
- The **Deselect** button deselects an applicable resource.

The specified URL and the loaded resources are saved in the profile. The username and the password are not saved in the profile, are used only in VDA Profile Editor and should be entered during every launch of VDA Profile Editor.



The **Username** should be specified in the following format: *Domain\username*.

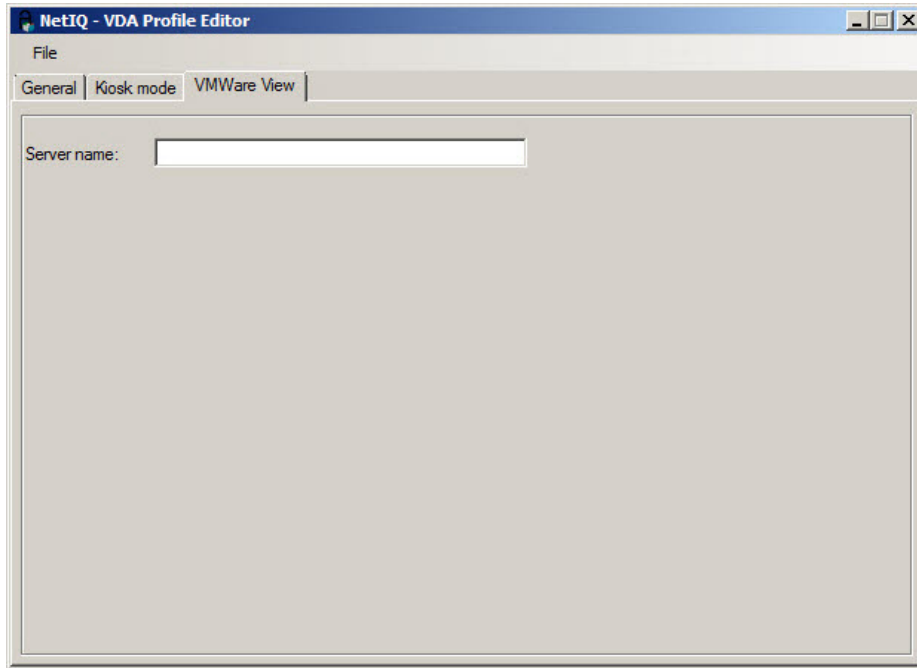


The **Domain Admins** privileges are not necessarily required. But there should be displayed the same list of available resources as for the VDA Shell user.

If the **Load ICA templates directly** option is selected, all the buttons of the **ICA Template** section will be enabled and there will be provided an opportunity to load and to export ICA Templates for Citrix XenApp.

VMware View

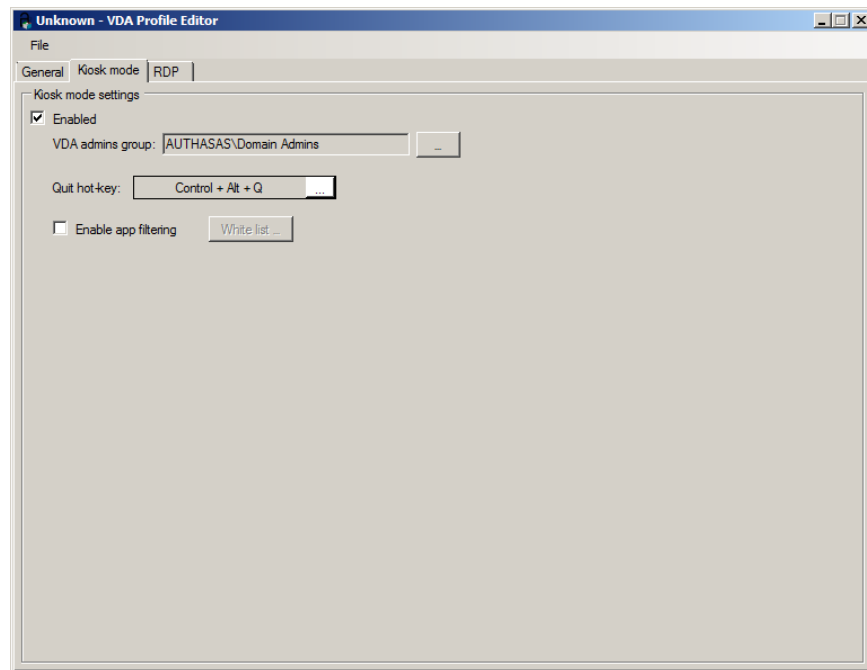
VMware View – integration with VMware View. It is also required to specify server name on VMware View tab.



Kiosk Mode Settings

The following **Kiosk mode** settings are available:

- [Enabled](#)
- [VDA admins group](#)
- [Quit hotkey](#)
- [Enable app filtering](#)



Enabled

Enabled allows to enable kiosk mode. Windows Explorer will be closed after launching NetIQ VDA Shell.

VDA Admins Group

VDA admins group allows to add, edit, configure profiles and to terminate NetIQ VDA Shell.

Quit Hotkey

Quit Hotkey allows to configure hotkey to exit the NetIQ VDA Shell.

Enable App Filtering

Enable App Filtering allows to configure white list of application that can be started when NetIQ VDA Shell is opened. We should add full absolute paths to exe-files.

Web Service


If the Web Service option is disabled, NetIQ VDA will work only for clients and thin clients that are joined to the domain. In this case NetIQ VDA will work via NetIQ Authenticore Server without NetIQ Web Service.

If the Web Service option is enabled, you should specify full path to the Web Service in URL field. E.g., <https://core.netiq.local:8232/Service.svc/bsc>.



Please ensure that you have exported Security Certificate from Web Service and have applied it for all clients and thin clients.

Troubleshooting

 This chapter provides solutions for known issues. If you encounter any problems that are not mentioned here, please contact the support service.

Problem with Running VDA Profile Editor

Description:

After the launch of VDA Profile Editor, the following error is displayed: *No plugins were found.*

Solution:

1. Make sure that you run VDA Profile Editor from the local drive but not from the network folder.
2. Select all files in the **VDA Profile Editor** folder, open their **Properties** and click the **Unblock** button in the **General** tab.

 Sometimes it may be required to open the **VDA Profile Editor** folder, select every file separately and click the **Unblock** button in the **General** tab of the **Properties** window.

Index

A

Administrator 1, 3
Authentication 1, 3, 5, 8
Authenticator 3

D

Default 5
Desktop 1, 3
Domain 9

L

List 5
Local 4
Logon 3

M

Microsoft Windows Server 2008 4

P

Password 9
Properties 14

R

Remote 7

S

Security 13
Server 8, 13
Settings 11
System 4

T

Template 9

U

Username 9

W

Windows 12
Windows 7 4