



NetIQ SecureLogin - Advanced Authentication Plugin

Installation Guide

Version 5.1.0

Table of Contents

	1
Table of Contents	2
Introduction	3
About This Document	3
System Requirements	4
Installing NetIQ SecureLogin Advanced Authentication Plugin	5
Installing NSL AA Plugin	5
Removing NSL AA Plugin	9
Microsoft Windows Server 2008	9
Microsoft Windows Server 2003	9
Microsoft Windows Server 2012	9
Troubleshooting	10
Cannot Install NSL AA Plugin	10
Index	11

Introduction


About This Document


Purpose of the Document

This NetIQ SecureLogin Advanced Authentication Plugin Installation Guide is intended for system administrators and describes how to install NetIQ SecureLogin Advanced Authentication Plugin.


Document Conventions

This document uses the following conventions:

 **Warning.** This sign indicates requirements or restrictions that should be observed to prevent undesirable effects.

 **Important notes.** This sign indicates important information you need to know to use the product successfully.

 **Notes.** This sign indicates supplementary information you may need in some cases.

 **Tips.** This sign indicates recommendations.

- Terms are italicized, e.g.: ***Authenticator***.
- Names of GUI elements such as dialogs, menu items, and buttons are put in bold type, e.g.: the **Logon** window.

System Requirements

Before installing the product, check that the following system requirements are fulfilled:


- Microsoft Windows 7 SP1 x86/x64.

 Only NetIQ SecureLogin 7.0 SP3 is supported.

Installing NetIQ SecureLogin Advanced Authentication Plugin

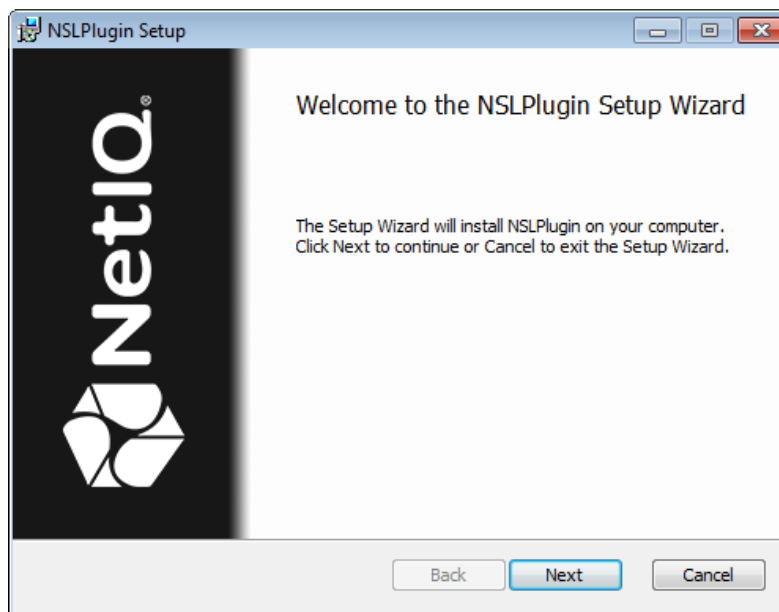
NetIQ SecureLogin Advanced Authentication Plugin is intended for users who want to get additional authentication opportunities that are granted by software solutions of NetIQ.

Installing NSL AA Plugin

 Before the installation of NSL AA Plugin make sure that **Client** or **RTE**, at least one **authentication provider** and **Novell SecureLogin** are already installed on your computer. Otherwise the installation of NSL AA Plugin will be impossible.

To install NSL AA Plugin via Setup Wizard:

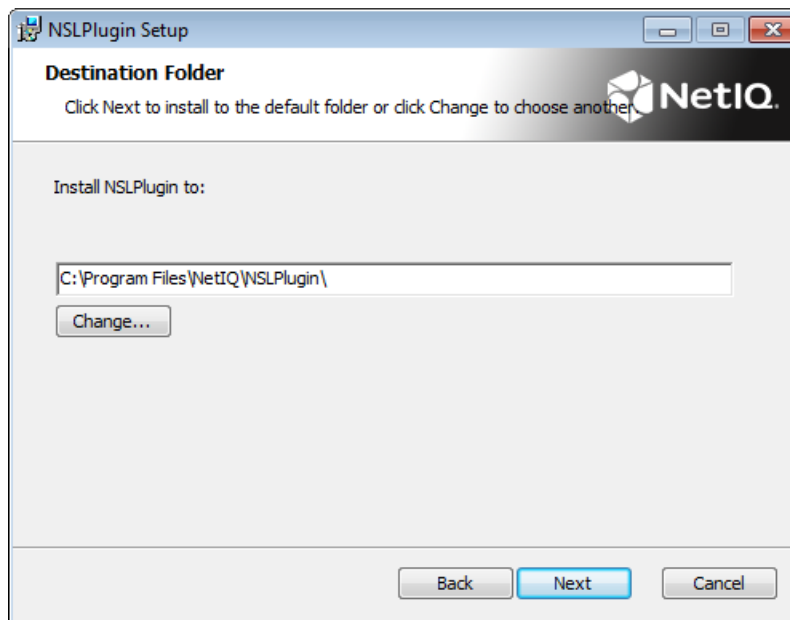
1. Tick **NSLPlugin** in the list of components and click **Continue**.
2. Click **Next** to continue.



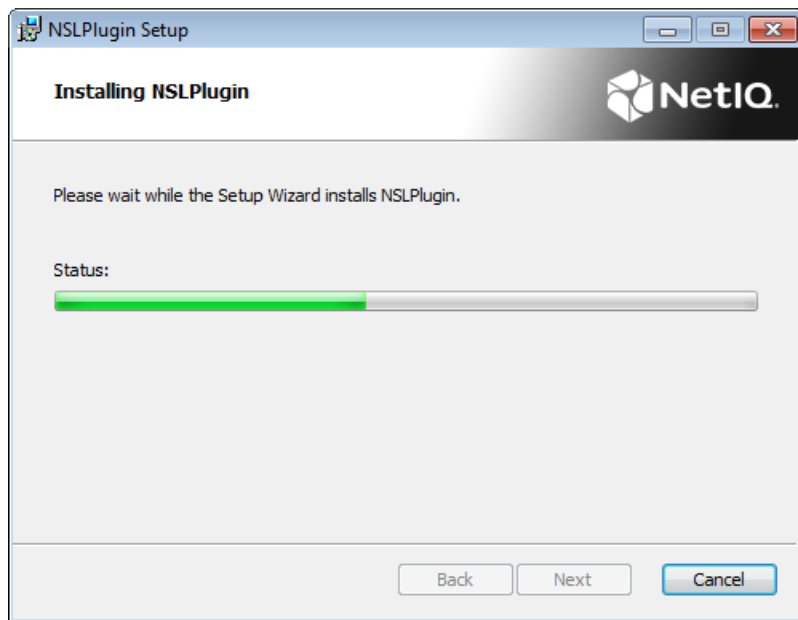
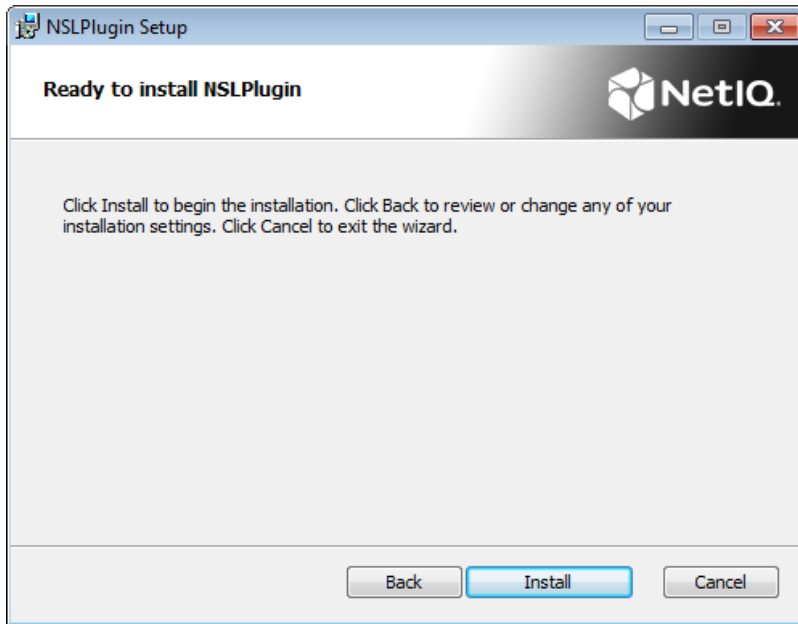
3. Read the **License agreement**. Select the **I accept the terms in the License Agreement** check box and click **Install**.

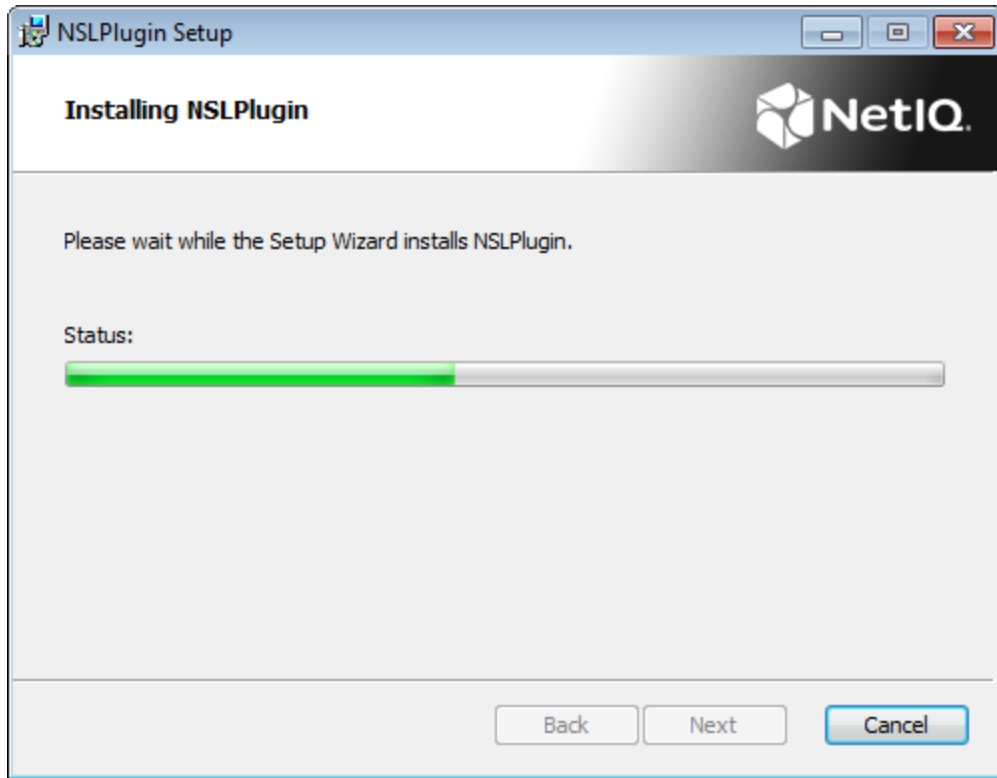


4. Click **Next** to install the default folder or click **Change** to choose another.

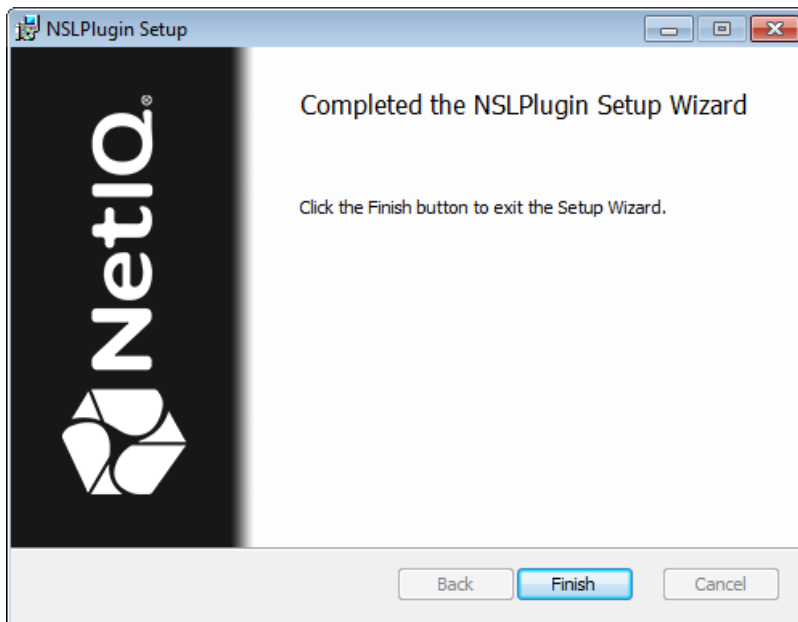


5. Click **Install** and wait until the components are installed.





6. Click **Finish** to close the Wizard.



Removing NSL AA Plugin

In this chapter:

- [Microsoft Windows Server 2008](#)
- [Microsoft Windows Server 2003](#)
- [Microsoft Windows Server 2012](#)

Microsoft Windows Server 2008

1. In the **Start** menu, select **Control panel** and then double-click **Programs and Features**.
2. Select **NSLPlugin** and click **Uninstall**.
3. Confirm the removal.
4. Wait a few seconds until the removal is completed.

Microsoft Windows Server 2003

1. In the **Start** menu, select **Settings > Control Panel > Add or Remove Programs**.
2. Select **NSLPlugin** and click **Remove**.
3. Confirm the removal.

Microsoft Windows Server 2012

1. In the **Search** menu, select **Apps > Control Panel > Programs > Programs and Features**.
2. Select **NSLPlugin** and click **Uninstall**.
3. Confirm the removal.
4. Wait a few seconds until the removal is completed.

Troubleshooting

i This chapter provides solutions for known issues. If you encounter any problems that are not mentioned here, please contact the support service.

Cannot Install NSL AA Plugin

Description:

Error appears when installing NSL AA Plugin on your computer.

Cause:

- a. You are installing NSL AA Plugin on the network drive.
- b. You have no space left on the disk.
- c. You are installing NSL AA Plugin on the unsupported OS.
- d. You are installing NSL AA Plugin on the OS with the wrong bitness.

Solution:

- a. Change the installation path.
- b. Free the amount of disk space needed for installation.
- c. Check the [System Requirements](#) chapter.
- d. Check your OS's bitness (x64/x86) and run the corresponding installer (x64/x86).

Index

A

Authentication 1, 3, 5
Authenticator 3

C

Client 5
Control 9
Control panel 9

E

Error 10

L

License 5
Logon 3

M

Microsoft Windows Server 2003 9
Microsoft Windows Server 2008 9
Microsoft Windows Server 2012 9

R

Remove 9
RTE 5

S

Settings 9
System 4, 10

W

Windows 7 4