



NetIQ Advanced Authentication Framework - Virtual Desktop Authentication (VDA) Shell

Installation Guide

Version 5.1.0

Table of Contents

	1
Table of Contents	2
Introduction	3
About This Document	3
System Requirements	4
Installing and Removing NetIQ Advanced Authentication Framework VDA Shell	5
Installing VDA Shell	5
Removing VDA Shell	9
Microsoft Windows 7/Microsoft Windows Server 2008	9
Microsoft Windows Server 2003	9
Microsoft Windows 8/Microsoft Windows Server 2012	9
Upgrading VDA Shell	10
Configuration of VDA Shell	11
Silent Configuration	11
Automatic Start of VDA Shell When the Computer Starts	11
AutoAdminLogon	12
Troubleshooting	13
Cannot Install NetIQ Advanced Authentication Framework – VDA Shell	13
Index	14

Introduction

About This Document


Purpose of the Document


This Virtual Desktop Authentication Shell Installation Guide is intended for system administrators and describes how to install NetIQ Advanced Authentication Framework VDA Shell.

For more information about NetIQ Advanced Authentication Framework software, see NetIQ Advanced Authentication Framework Administrative Tools - Administrator's Guide.


Document Conventions

This document uses the following conventions:

 **Warning.** This sign indicates requirements or restrictions that should be observed to prevent undesirable effects.


 **Important notes.** This sign indicates important information you need to know to use the product successfully.

 **Notes.** This sign indicates supplementary information you may need in some cases.

 **Tips.** This sign indicates recommendations.

- Terms are italicized, e.g.: ***Authenticator***.
- Names of GUI elements such as dialogs, menu items, and buttons are put in bold type, e.g.: the **Logon** window.

System Requirements

 Installing and removing this product requires **Local Administrator** privileges.

Before installing the product, check that the following system requirements are fulfilled:


- Microsoft Windows Embedded Standard 7 Service Pack 1 x86;
- Microsoft Windows 7 Service Pack 1 x86/x64;
- Microsoft Windows 8 x86/x64.


Installing and Removing NetIQ Advanced Authentication Framework VDA Shell


In this chapter:

- [Installing VDA Shell](#)
- [Removing VDA Shell](#)
- [Upgrading VDA Shell](#)

Installing VDA Shell

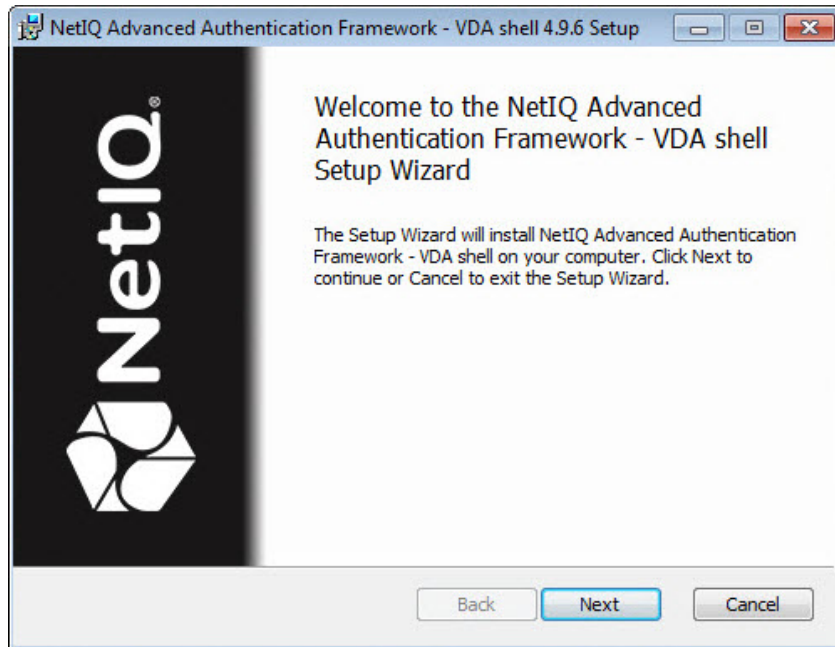
 If VDA Shell will be installed on non-domain client/thin client, it is necessary to use msi parameter WEBSERVICEURL and specify path to NetIQ Web Service to check the license. E.g.:
msiexec /i vdashell.msi
WEBSERVICEURL="https://core.athasas.local:8232/Service.svc/bsc".

 To use VDA Shell together with Smartphone authentication provider and Security Questions authentication provider you should have their group policy settings applied on the client.

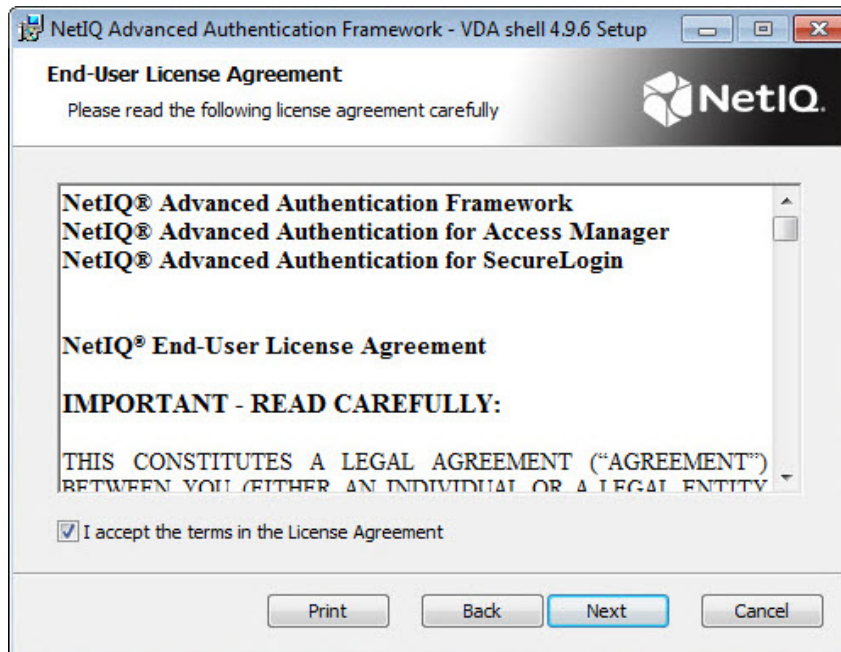
 The start of installation may be frozen for a time up to 1 minute in the case of offline mode. This delay occurs due to check of digital signature of component.

To install VDA via Setup Wizard:

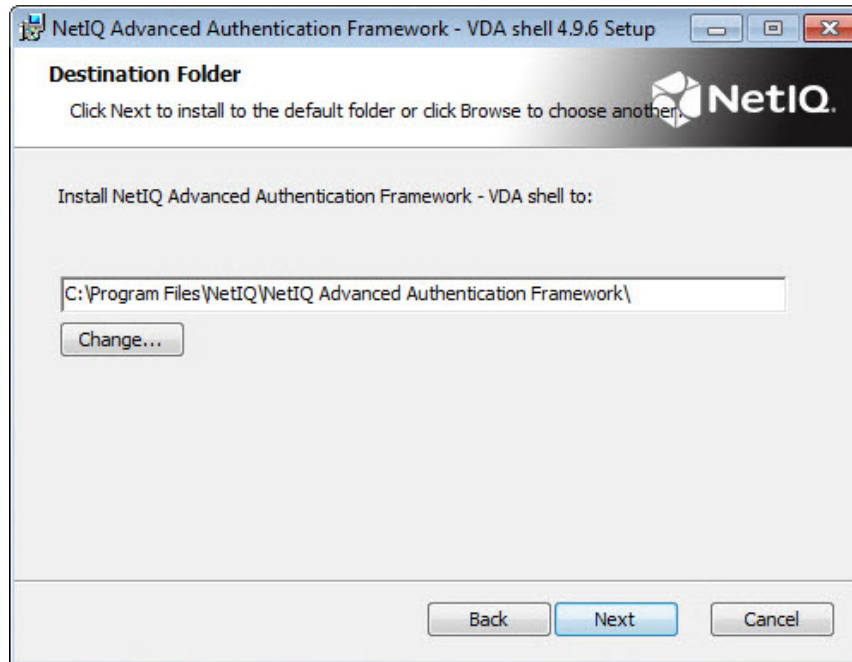
1. Click **Next** to continue.



2. Read the **License Agreement**. Select the **I accept the terms in the license agreement** check box and click **Next**.

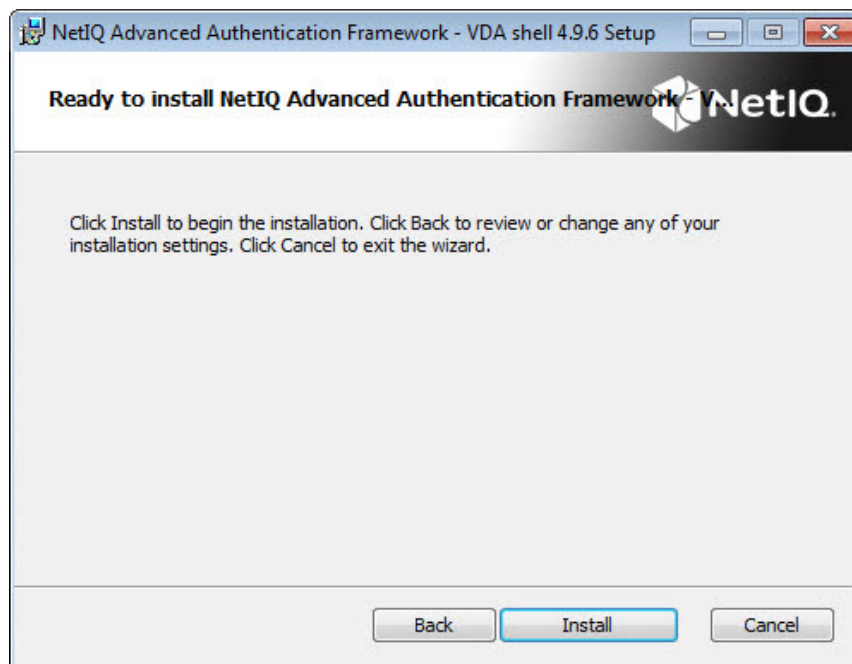


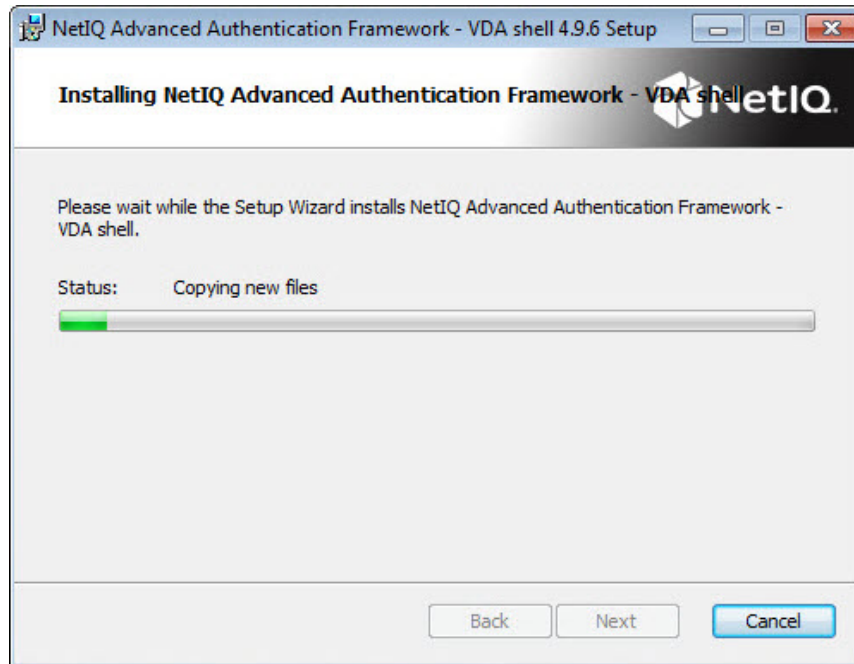
3. Click **Next** to install to the default folder or click **Browse** to choose another.



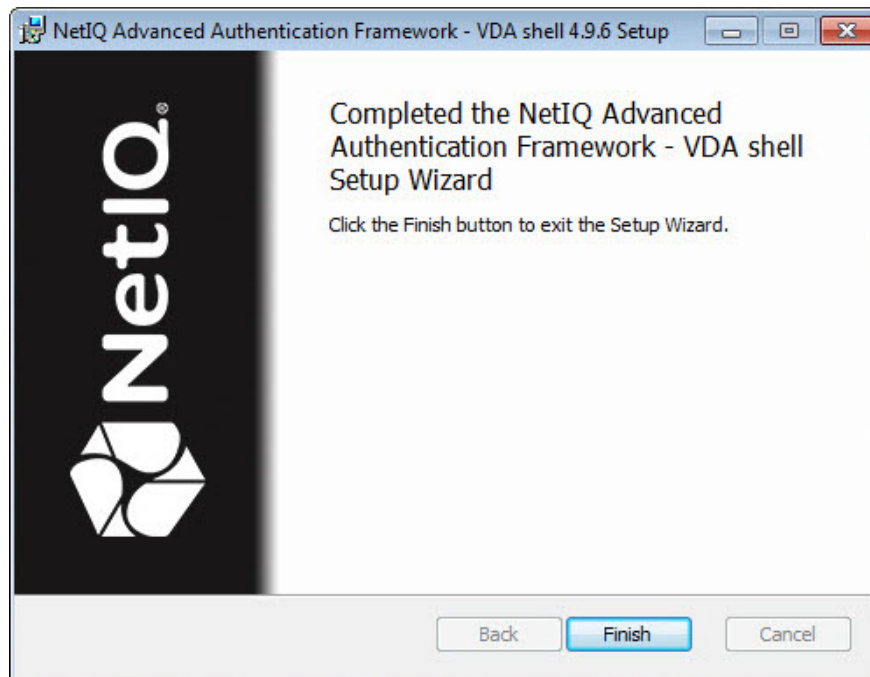
- To change the destination folder, use the **Change** button.
- To continue, click **Next**.

4. Click **Install** and wait until the component is installed.





5. Click **Finish** to close the Wizard.



Removing VDA Shell

In this chapter:

- [Microsoft Windows 7/ Microsoft Windows Server 2008](#)
- [Microsoft Windows Server 2003](#)
- [Microsoft Windows 8/ Microsoft Windows Server 2012](#)

Microsoft Windows 7/Microsoft Windows Server 2008

1. In the **Start** menu, select **Control panel** and then double-click **Programs and Features**.
2. Select **NetIQ Advanced Authentication Framework – VDA shell** and click **Uninstall**.
3. Confirm the removal.
4. Wait a few seconds until the removal is completed.

Microsoft Windows Server 2003

1. In the **Start** menu, select **Settings > Control Panel > Add or Remove Programs**.
2. Select **NetIQ Advanced Authentication Framework – VDA shell** and click **Remove**.
3. Confirm the removal.


Microsoft Windows 8/Microsoft Windows Server 2012

1. In the **Search** menu, select **Apps > Control Panel > Programs > Programs and Features**.
2. Select **NetIQ Advanced Authentication Framework – VDA shell** and click **Uninstall**.
3. Confirm the removal.
4. Wait a few seconds until the removal is completed.

Upgrading VDA Shell

In order to upgrade NetIQ Advanced Authentication Framework VDA shell, start to install the new version. You will receive a notification about already existing previous version. Continue the standard installation procedure and your NetIQ Advanced Authentication Framework version will be automatically updated.

After the upgrade is complete, the installer may ask you to restart a computer.

 You do not need to remove the previous NetIQ Advanced Authentication Framework version in order to upgrade VDA shell.

Configuration of VDA Shell

In this chapter:

- [Silent configuration](#)
- [Automatic start of VDA Shell when the computer starts](#)
- [AutoAdminLogon](#)

Silent Configuration


To configure VDA Shell in the silent mode:

1. Copy profile to the folder: %ALLUSERSPROFILE%\NetIQ\NetIQ Advanced Authentication Framework\VDA\Profiles
2. Create registry key: HKLM\Software\NetIQ\NetIQ Advanced Authentication Framework\VDAShell
3. Create registry value DefaultProfile (string) with name of profile file (without path). So it can be "citrix.profile" or "webservice.profile" .

Automatic Start of VDA Shell When the Computer Starts

To configure automatic start of VDA Shell when the computer starts, add VDA Shell to the **Startup** folder in **Start**. The path to the folder is:

- your personal startup folder should be C:\Users\\AppData\Roaming\Microsoft\Windows\Start Menu\Programs\Startup;
- the **All Users** startup folder should be C:\ProgramData\Microsoft\Windows\Start Menu\Programs\Startup.


 You can create the folders if they are not created. Enable viewing of hidden folders to see them.

AutoAdminLogon

You can use **Registry Editor** to add your logon information. To do this, follow these steps:

1. Click **Start**, click **Run**, type **regedit**, and then click **OK**.
2. Locate the following registry key:
HKEY_LOCAL_MACHINE\SOFTWARE\Mi-
crosoft\WindowsNT\CurrentVersion\Winlogon\AutoAdminLogon=1
3. Click **Start** and enter the following command in the search box: **netplwiz**. Press the **Enter** key. This command will load the **Advanced User Accounts Control Panel** applet.
4. In the **Users** tab, clear the **Users must enter a user name and password to use this computer** check box.
5. Click **Apply** at the bottom of the **User Accounts** window.
6. When the **Automatically Log On** dialog box appears, enter the user name you want to login with automatically to Windows 7. Then enter your account password into the required fields. Click **OK** to continue.
7. Click **OK** in the **User Accounts** window to complete the process.

Now Windows 7 will log on automatically when your computer starts up.

 After the configuration of automatic logon, the patch should be installed. For more information, go to <http://support.microsoft.com/kb/977534/en-us>.

Troubleshooting

i This chapter provides solutions for known issues. If you encounter any problems that are not mentioned here, please contact the support service.

Cannot Install NetIQ Advanced Authentication Framework – VDA Shell

Description:

Error appears when installing NetIQ Advanced Authentication Framework – VDA shell on your computer.

Cause:

- a. You are installing NetIQ Advanced Authentication Framework – VDA shell on the network drive.
- b. You have no space left on the disk.
- c. You are installing VDA shell on the unsupported OS.
- d. You are installing VDA shell on the OS with the wrong bitness.

Solution:

- a. Change the installation path.
- b. Free the amount of disk space needed for installation.
- c. Check the list of supported OS.
- d. Check your OS's bitness (x64/x86) and run the corresponding installer (x64/x86).

Index

A

Administrator 3
Authentication 1, 3, 5, 9-11, 13
Authenticator 3

C

Control 9
Control panel 9
Create 11

D

Desktop 1, 3

E

Error 13

L

License 6
Local 4
Logon 3

M

Menu 11
Microsoft Windows Server 2003 9

R

Remove 9

S

Security 5
Settings 9
System 4

U

User 12

W

Windows 4, 11

Windows 7 4, 9, 12

Windows 8 4, 9