



NetIQ Advanced Authentication
Framework - Extensible Authentica-
tion Protocol Server

Installation Guide

Version 5.1.0

Table of Contents

	1
Table of Contents	2
Introduction	3
About This Document	3
System Requirements	4
Installing and Removing EAP Server Package	5
Installing EAP Server Package	5
Removing EAP Server Package	9
Microsoft Windows Server 2008	9
Microsoft Windows Server 2003	9
Microsoft Windows Server 2012	9
Upgrading EAP Server Package	10
Troubleshooting	11
Cannot Install EAP Server Package	11
Index	12

Introduction

About This Document

Purpose of the Document

This EAP Server Installation Guide is intended for system administrators and describes the installation of NetIQ Advanced Authentication Framework – Extensive Authentication Protocol Server.

Document Conventions

This document uses the following conventions:



Warning. This sign indicates requirements or restrictions that should be observed to prevent undesirable effects.



Important notes. This sign indicates important information you need to know to use the product successfully.



Notes. This sign indicates supplementary information you may need in some cases.



Tips. This sign indicates recommendations.

- Terms are italicized, e.g.: ***Authenticator***.
- Names of GUI elements such as dialogs, menu items, and buttons are put in bold type, e.g.: the **Logon** window.

System Requirements

Before installing the product, check that the following system requirements are fulfilled:


- Microsoft Windows 2008 Server R2 SP1

 Installing and removing the EAP Server component requires **Local Admins** privileges.

Installing and Removing EAP Server Package

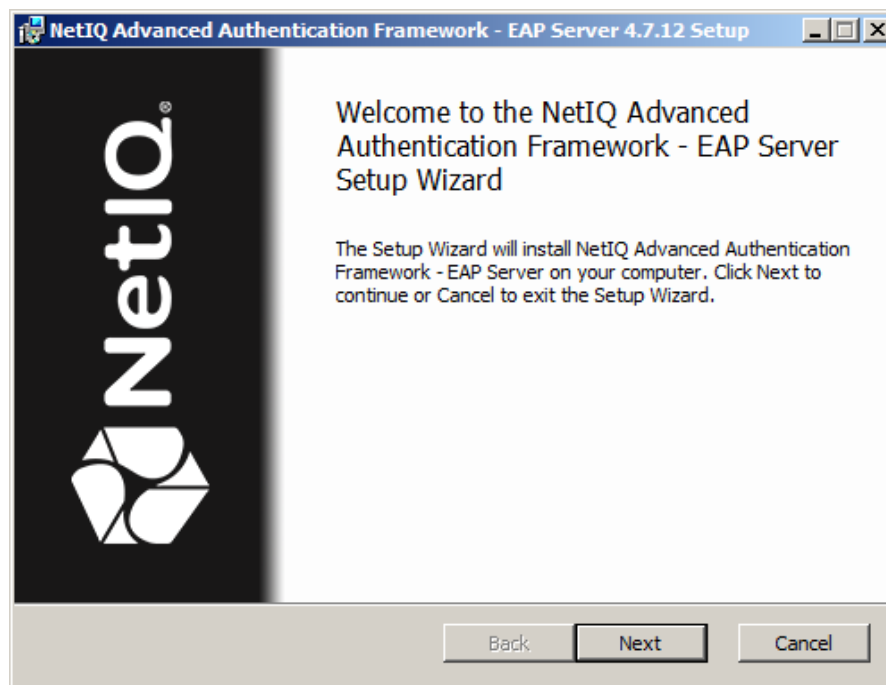
Extensible Authentication Protocol Server (EAP Server) is an Internet Engineering Task Force (IETF) standard that provides an infrastructure for network access clients and authentication servers to host plug-in modules for current and future authentication methods.

Installing EAP Server Package

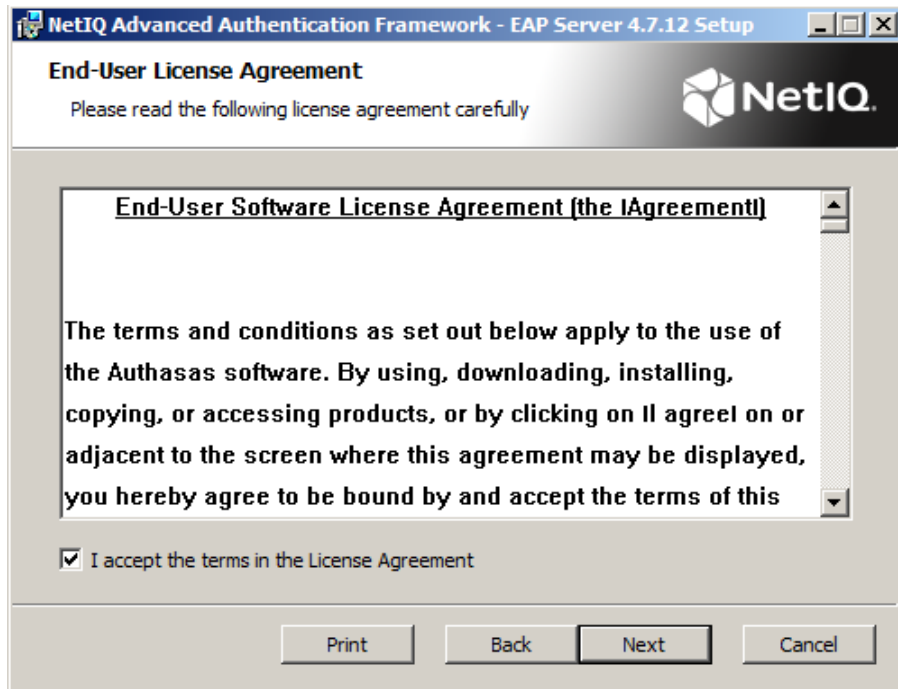
 The start of installation may be frozen for a time up to 1 minute in the case of offline mode. This delay occurs due to check of digital signature of component.

To install EAP Server Package via Setup Wizard:

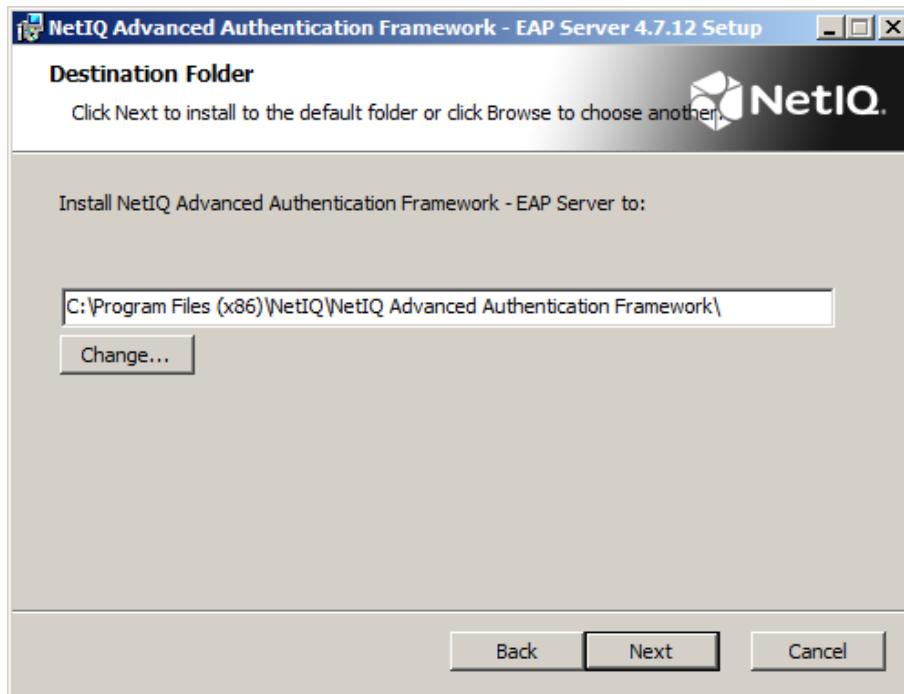
1. Run **Autorun.exe** from NetIQ Advanced Authentication Framework distribution kit. Tick **EAP Server** in the list of components and click **Continue**.
2. Click **Next** to continue.



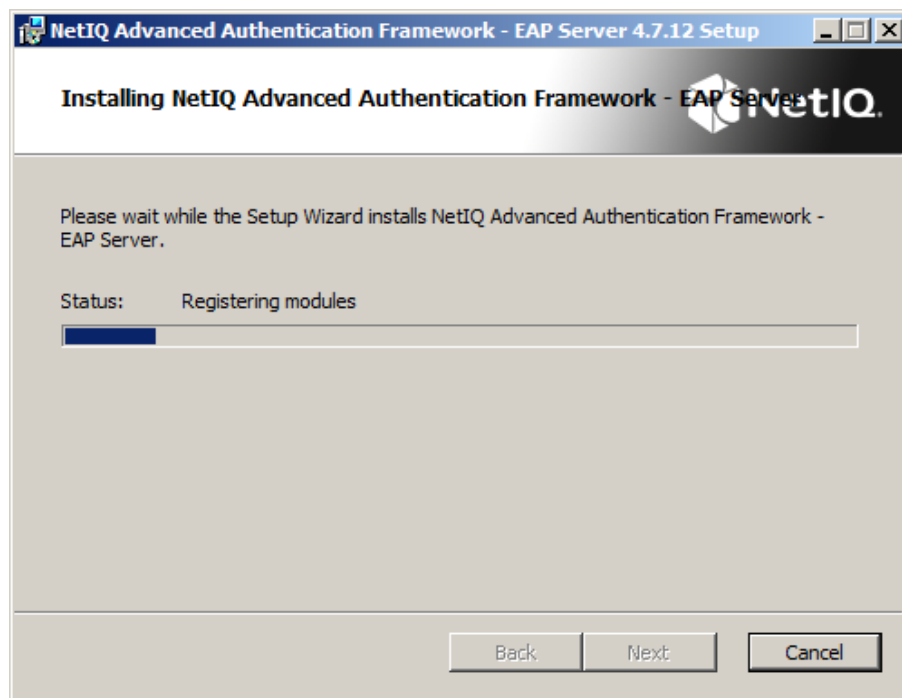
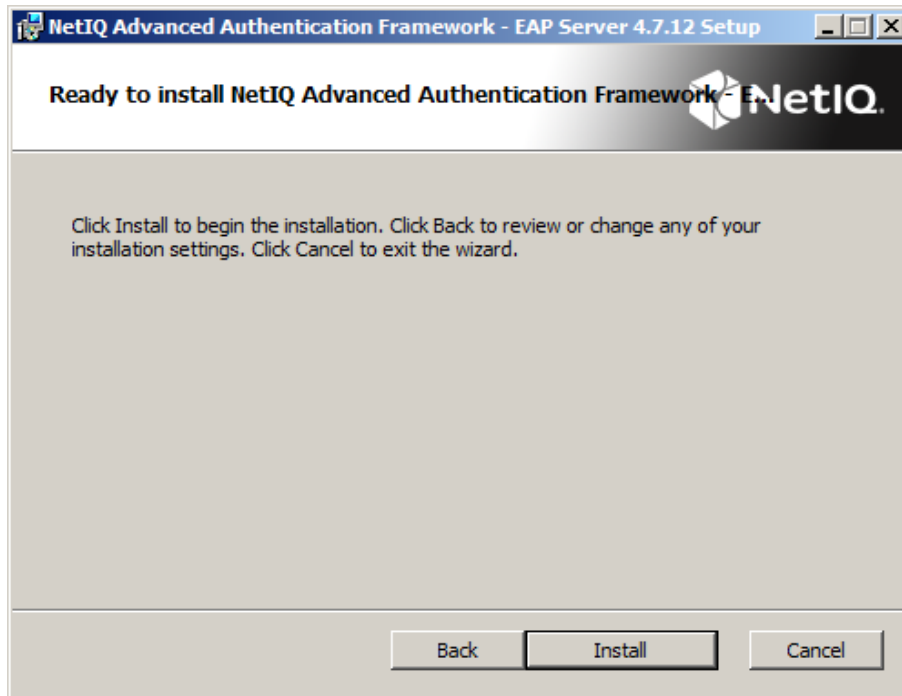
3. Read the **License agreement**. Click **I accept the terms in the license agreement** and then click **Install**.



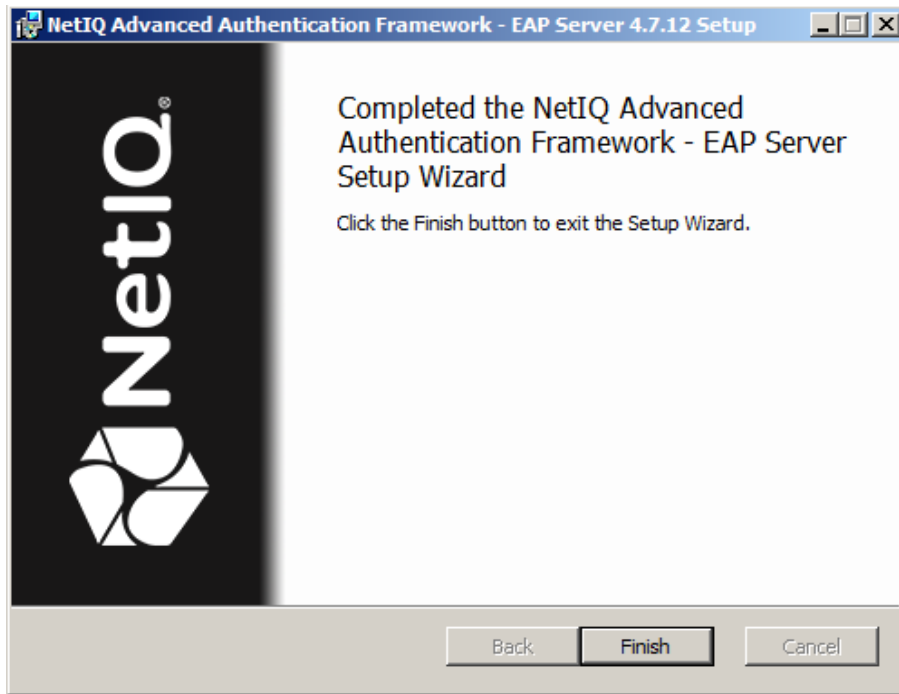
4. Check the destination folder and path.



5. Click **Install** and wait until the components are installed.



6. Click **Finish** to close the Wizard.



Removing EAP Server Package

In this chapter:

- [Microsoft Windows Server 2008](#)
- [Microsoft Windows Server 2003](#)
- [Microsoft Windows Server 2012](#)

Microsoft Windows Server 2008

1. In the **Start** menu, select **Control panel** and then double-click **Programs and Features**.
2. Select **NetIQ Advanced Authentication Framework – EAP Server Package** and click **Uninstall**.
3. Confirm the removal.
4. Wait a few seconds until the removal is completed.

Microsoft Windows Server 2003

1. In the **Start** menu, select **Settings > Control Panel > Add or Remove Programs**.
2. Select **NetIQ Advanced Authentication Framework – EAP Server Package** and click **Remove**.
3. Confirm the removal.


Microsoft Windows Server 2012

1. In the **Search** menu, select **Apps > Control Panel > Programs > Programs and Features**.
2. Select **NetIQ Advanced Authentication Framework - EAP Server Package** and click **Uninstall**.
3. Confirm the removal.
4. Wait a few seconds until the removal is completed.

Upgrading EAP Server Package

In order to upgrade EAP Server Package, start to install the new version. You will receive a notification about already existing previous version. Continue the standard installation procedure and your NetIQ Advanced Authentication Framework version will be automatically updated.

After the upgrade is complete, the installer may ask you to restart a computer.

 You do not need to remove the previous NetIQ Advanced Authentication Framework version in order to upgrade EAP Server Package.

Troubleshooting

i This chapter provides solutions for known issues. If you encounter any problems that are not mentioned here, please contact the support service.

Cannot Install EAP Server Package

Description:

Error appears when installing EAP Server Package on your computer.

Cause:

- a) You are installing EAP Server Package on the network drive.
- b) You have no space left on the disk.
- c) You are installing EAP Server Package on the unsupported OS.
- d) You are installing EAP Server Package on the OS with the wrong bitness.

Solution:

- a) Change the installation path.
- b) Free the amount of disk space needed for installation.
- c) Check the System Requirements chapter.
- d) Check your OS's bitness (x64/x86) and run the corresponding installer (x64/x86).

Index

A

Authentication 1, 3, 5, 9-10
Authenticator 3

C

Control 9
Control panel 9

E

Error 11

L

License 5
Local 4
Logon 3

M

Microsoft Windows Server 2003 9
Microsoft Windows Server 2008 9
Microsoft Windows Server 2012 9

P

Package 5, 10-11
Protocol 1, 3

R

Remove 9

S

Server 3-5, 9-11
Settings 9
System 4, 11

W

Windows 4