



NetIQ Advanced Authentication Framework

Card Authentication Provider Installation Guide

Version 5.1.0

Table of Contents

	1
Table of Contents	2
Introduction	3
About This Document	3
System Requirements	4
Installing and Removing Card Authentication Provider	5
Installing Card Authentication Provider	5
Removing Card Authentication Provider	6
Microsoft Windows 7/Microsoft Windows Server 2008	6
Microsoft Windows Server 2003	6
Microsoft Windows 8/Microsoft Windows Server 2012	6
Smart Card Authentication Provider Policies	7
Certificate Revocation Check Policy	8
OMNIKEY Smart Card Selection Policy	9
Smart Card Selection Policy	10
Installing and Removing Card Authentication Provider via Group Policy	12
Installing Card Authentication Provider via Group Policy	13
Removing Card Authentication Provider via Group Policy	17
Upgrading Card Authentication Provider via Group Policy	19
Troubleshooting	21
Cannot Install Card Authentication Provider	21
Index	22

Introduction

About This Document


Purpose of the Document


This Card Authentication Provider Installation Guide is intended for all user categories and describes how to use the client part of NetIQ Advanced Authentication Framework solution. In particular, it gives instructions as for how to install card type of authenticators.

For more general information on NetIQ Advanced Authentication Framework™ and the authentication software you are about to use, see NetIQ Advanced Authentication Framework – Client User's Guide.


Information on managing other types of authenticators is given in separate guides.

Document Conventions

 **Warning.** This sign indicates requirements or restrictions that should be observed to prevent undesirable effects.

 **Important notes.** This sign indicates important information you need to know to use the product successfully.

 **Notes.** This sign indicates supplementary information you may need in some cases.


 **Tips.** This sign indicates recommendations.

- Terms are italicized, e.g.: ***Authenticator***.
- Names of GUI elements such as dialogs, menu items, buttons are put in bold type, e.g.: the **Logon** window.

System Requirements

Before installing the product, check that the following system requirements are fulfilled:

- Microsoft Windows 7 (x64/x86) SP1/ Microsoft Windows 8 (x86/x64);
- Microsoft Windows Server 2008 R2 SP1/ Microsoft Windows Server 2003 (x64/x86) SP2/ Microsoft Windows Server 2003 R2 (x64/x86) SP2/ Microsoft Windows Server 2012;
- Card authentication provider should be installed on the computer with already installed NetIQ Advanced Authentication Framework.

 This authentication provider should be installed on **every** Authenticore Server.

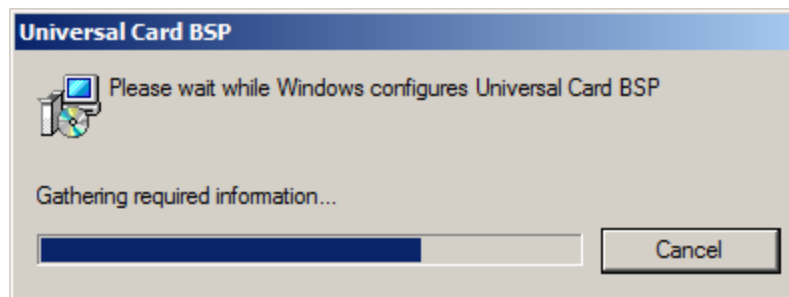
Installing and Removing Card Authentication Provider

NetIQ Advanced Authentication Framework™ package includes **card authentication provider**, which allows you to use card reading devices for authentication.

Installing Card Authentication Provider

To install Card Authentication Provider:

1. Run the .msi file. **Card Authentication Provider** will be automatically installed on your computer.



- ✖ The start of installation may be frozen for a time up to 1 minute in the case of offline mode. This delay occurs due to check of digital signature of component.

Removing Card Authentication Provider

In this chapter:

- [Microsoft Windows 7/Microsoft Windows Server 2008](#)
- [Microsoft Windows Server 2003](#)
- [Microsoft Windows 8/Microsoft Windows Server 2012](#)

Microsoft Windows 7/Microsoft Windows Server 2008

1. In the **Start** menu, select **Control panel** and then double-click **Programs and Features**.
2. Select **Card Authentication Provider** and click **Uninstall**.
3. Confirm the removal.
4. Wait a few seconds until the removal is completed.

Microsoft Windows Server 2003

1. In the **Start** menu, select **Settings > Control Panel > Add or Remove Programs**.
2. Select **Card Authentication Provider** and click **Remove**.
3. Confirm the removal.

Microsoft Windows 8/Microsoft Windows Server 2012

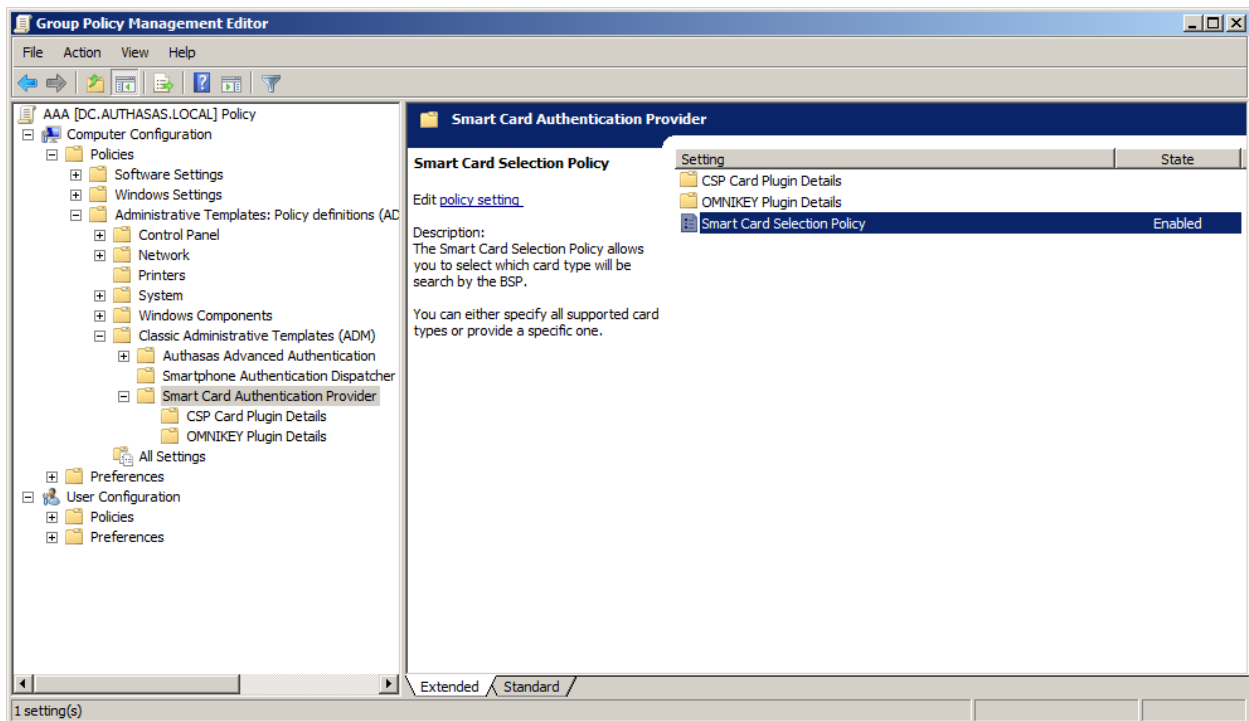
1. In the **Search** menu, select **Apps > Control Panel > Programs > Programs and Features**.
2. Select **Card Authentication Provider** and click **Uninstall**.
3. Confirm the removal.
4. Wait a few seconds until the removal is completed.

Smart Card Authentication Provider Policies

After the installation of Universal Card BSP, **Smart Card authentication provider** policies will be successfully added.

The **Smart Card Authentication Policy** section includes the following policies:

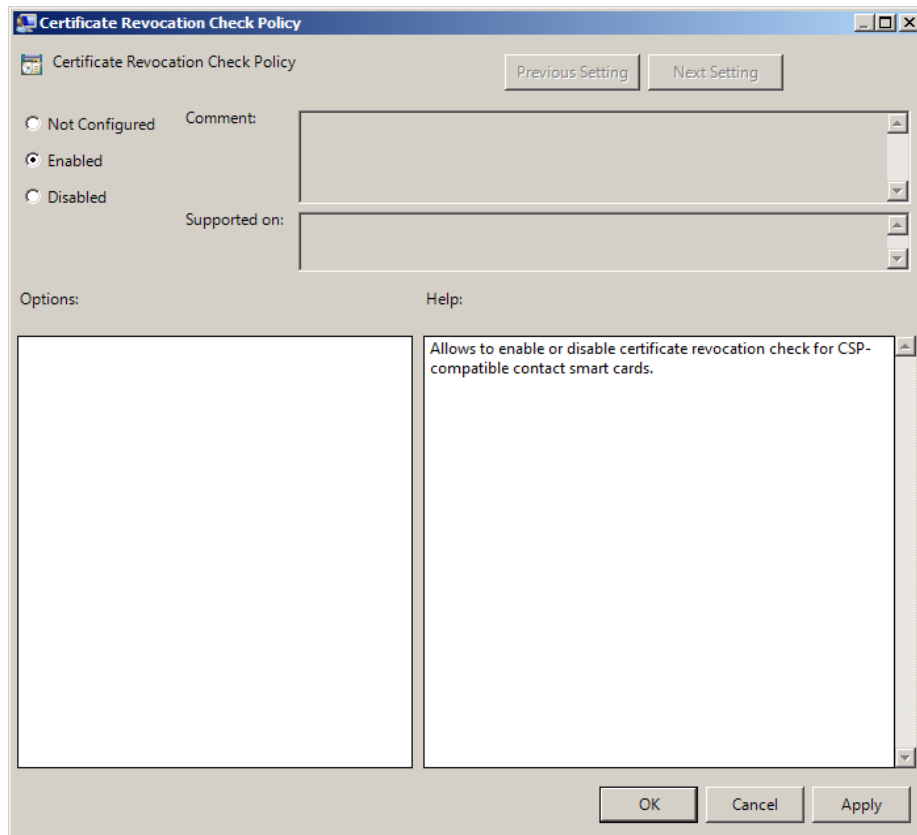
- [Certificate Revocation Check Policy](#)
- [OMNIKEY Smart Card Selection Policy](#)
- [Smart Card Selection Policy](#)



 After the configuration of **Smart Card authentication provider** policies, it is required to restart the service or the workstation.

Certificate Revocation Check Policy

The **Certificate Revocation Check Policy** allows to enable or disable certificate revocation check for CSP-compatible contact smart cards.



HKEY_LOCAL_MACHINE\SOFTWARE\Policies\NetIQ\BSP\UniversalCardBSP\CSPCardPlugin

parameter: CertRevocationCheckEnabled (REG_DWORD)

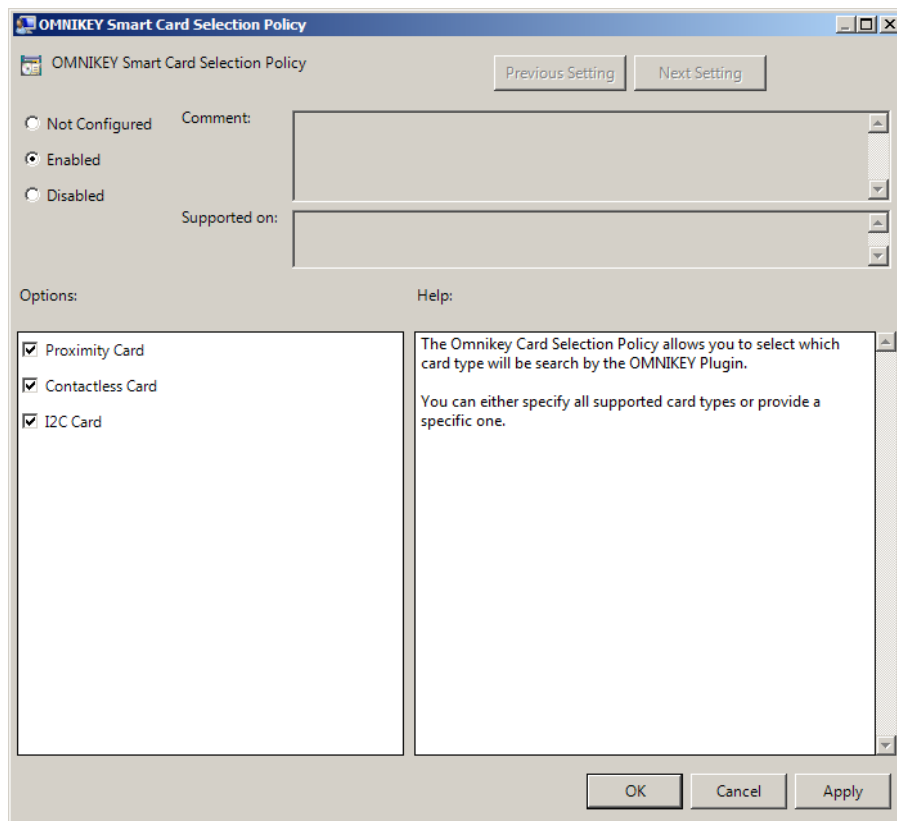
value: 0x00000001 (1)

1 means that the policy is enabled

 After the **Certificate Revocation Check Policy** is applied, it is necessary to restart computer for the new values to take effect.

OMNIKEY Smart Card Selection Policy

The **OMNIKEY Card Selection Policy** allows you to select which card type will be searched by OMNIKEY Plugin. You can either specify all supported card types or provide a specific one.



HKEY_LOCAL_MACHINE\SOFTWARE\Policies\NetIQ\BSP\UniversalCardBSP\OmnikeyPlugin
parameter: ContactlessCardEnabled (REG_DWORD)

I2CCardEnabled (REG_DWORD)

OmnikeyCardPolicyEnabled (REG_DWORD)

ProximityCardEnabled (REG_DWORD)

value: 0x00000001 (1), 0x00000001 (1), 0x00000001 (1), 0x00000001 (1)

1 means that Contactless Card is enabled

1 means that I2C Card is enabled

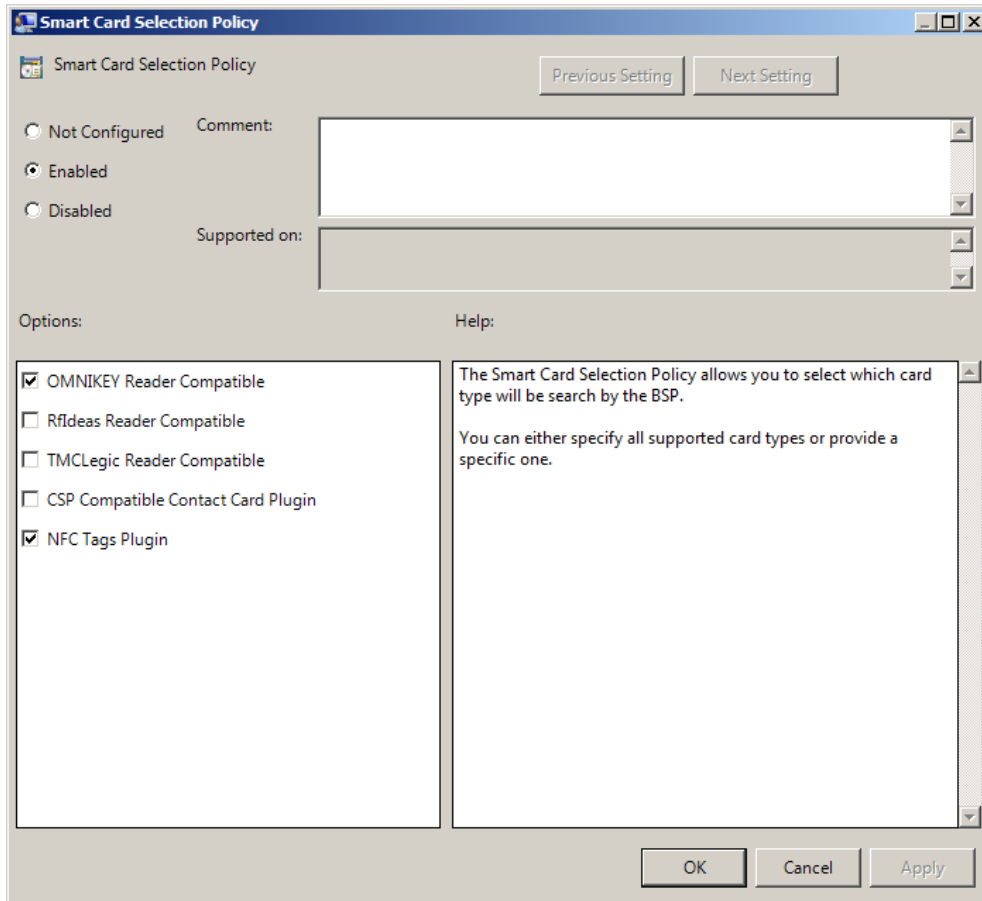
1 means that the policy is enabled

1 means that Proximity Card is enabled

 After the **OMNIKEY Smart Card Selection Policy** is applied, it is necessary to restart computer for the new values to take effect.

Smart Card Selection Policy

The **Smart Card Selection Policy** allows you to select which card type will be searched by BSP. You can either specify all supported card types or provide a specific one.



HKEY_LOCAL_MACHINE\SOFTWARE\Policies\NetIQ\BSP\CardBSP

parameter: CardPolicyEnabled (REG_DWORD)

CSPCardPluginEnabled (REG_DWORD)

OmnikeyPluginEnabled (REG_DWORD)

RfIdeasPluginEnabled (REG_DWORD)

TMCLegicPluginEnabled (REG_DWORD)

NFCPluginEnabled (REG_DWORD)

value: 0x00000001 (1), 0x00000001 (1), 0x00000001 (1), 0x00000001 (1), 0x00000001 (1),
0x00000001 (1)

1 means that the policy is enabled

1 means that CSP Contact Card Plugin is compatible


1 means that OMNIKEY Reader is compatible

1 means that RfIdeas Reader is compatible


1 means that TMCLegic Reader is compatible

1 means that NFC Tags Plugin is compatible

 Currently NFC Tags Plugin is available in beta state.


 After the **Smart Card Selection Policy** is applied, it is necessary to restart computer for the new values to take effect.

Installing and Removing Card Authentication Provider via Group Policy

 It is recommended for Microsoft Windows Server 2003 users to install **Group Policy Management Console**.

To install/remove NetIQ Advanced Authentication Framework Modules, use:

- **Group Policy Management Console (GPMC)**, which is installed by default on a Domain Controller. To open GPMC, click **Start** and select **Administrative Tools > Group Policy Management**.
- **Group Policy Management Editor (GPME)**, which can be opened from GPMC. To open GPME, under domain right-click the group policy object (GPO) you are using to install the software and select **Edit**.

 It is highly recommended that you do not use **Default Group Policy**, because it is applicable to entire domain. It is not recommended to install/upgrade client components for all workstations at the same time.

1. Create new global security group and new group policy object.

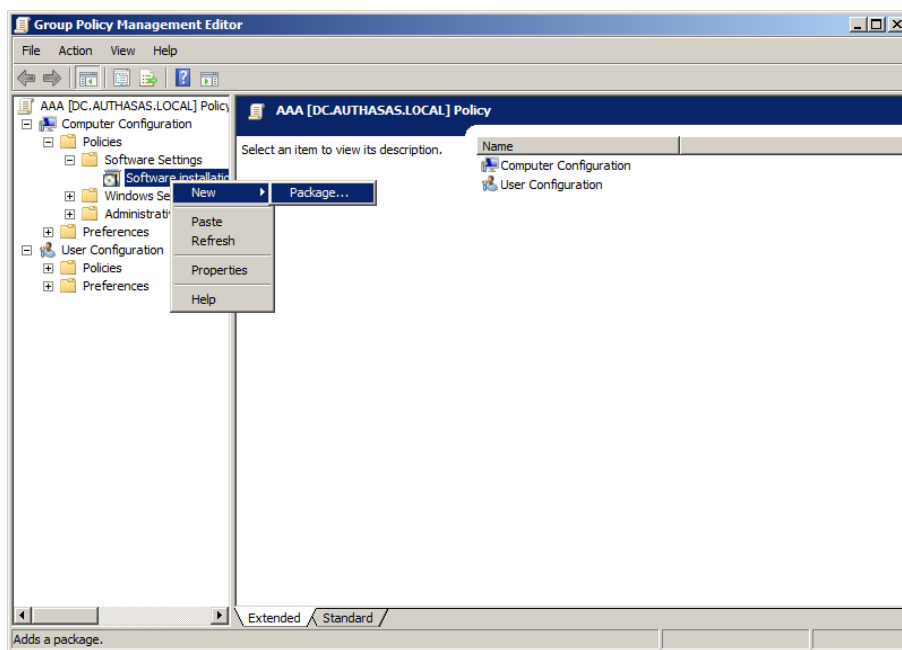
2. Connect them:

- a. Open created group policy object properties;
- b. Go to the **Security** tab;
- c. Clear the **Apply Group Policy** check box for the **Authenticated Users** group;
- d. Add created group and select the **Apply Group Policy** check box for it.

Installing Card Authentication Provider via Group Policy

To install Card authentication provider using the group policy:

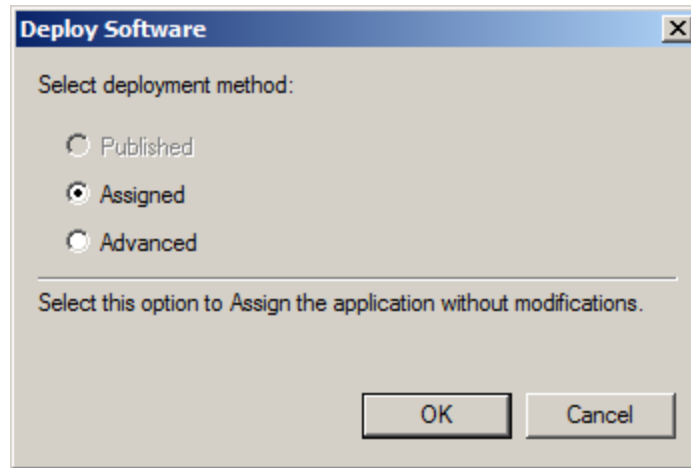
1. In GPME, in the selected GPO under **Computer configuration > Policies > Software Settings**, right-click **Software Installation** and select **New > Package**.



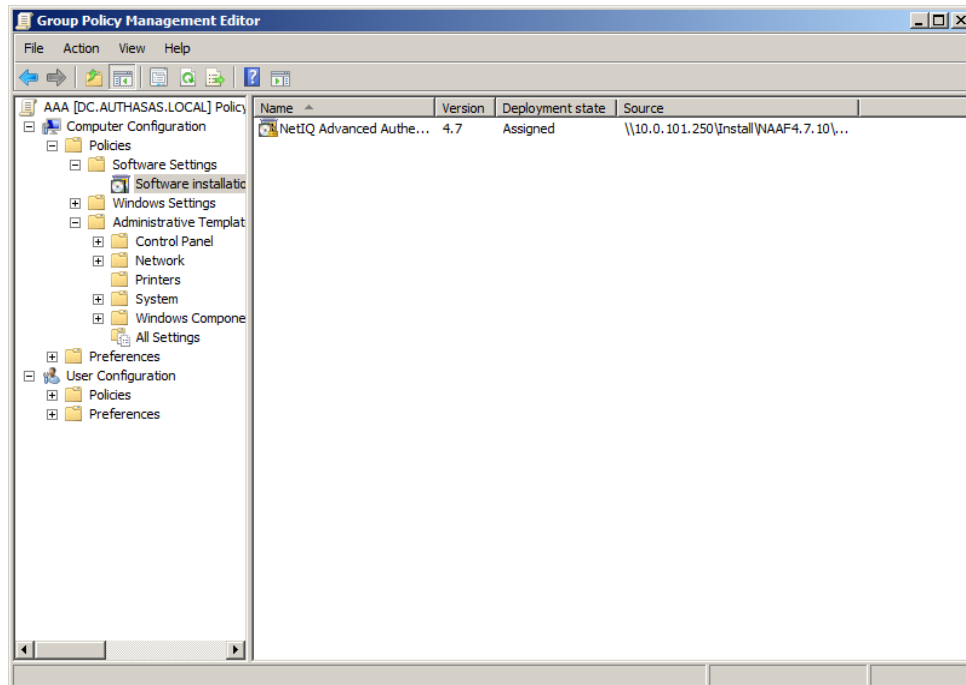
2. Specify the network path to the installer package.

 The directory you are willing to install should be located on network drive.

3. In the **Deploy Software** dialog, select the **Assigned** option and click **OK**.

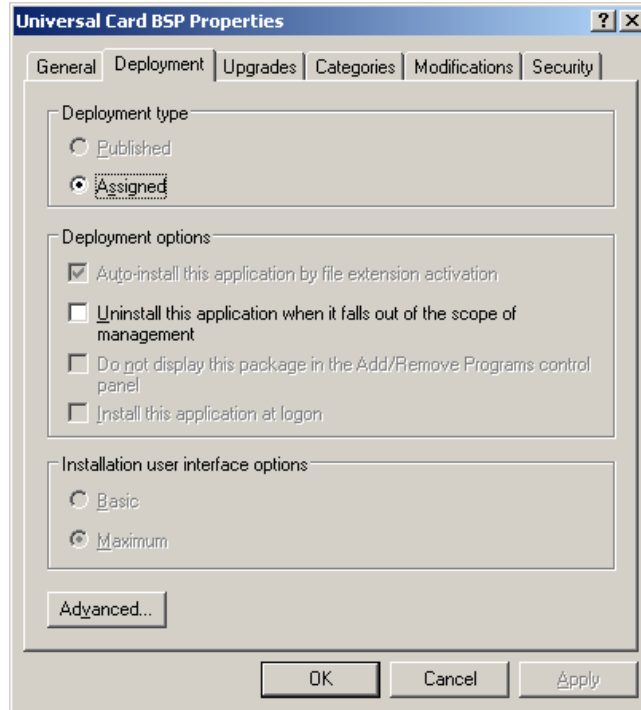


4. The installer package name, version, state and path are displayed in **Group Policy Management Editor**.

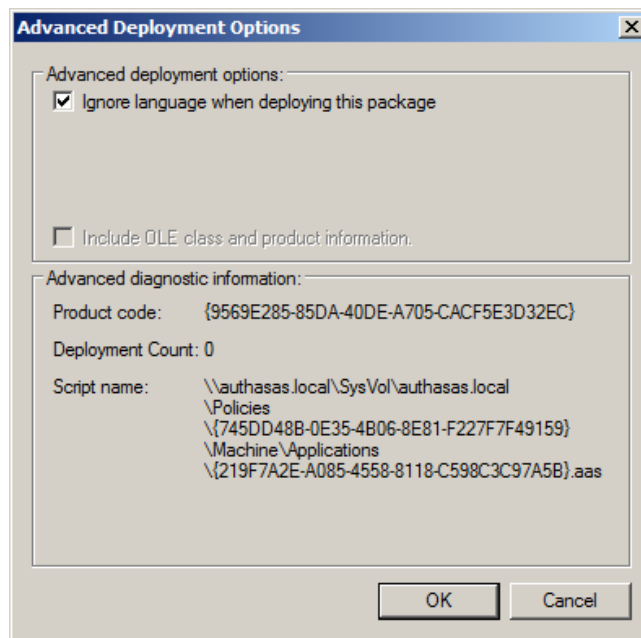


5. Open package properties:

a) On the **Deployment** tab: clear the **Uninstall this application when it falls out of the scope of management** check box. It is done to prevent undesirable uninstallation in case of problems as well as for the upgrade to go properly.




b) On the **Deployment** tab: click the **Advanced** button and select the **Ignore language when deploying this package** option. If you don't set this option, the package will be installed only on OS with package's language.



c) Clear the **Make this 32-bit X86 application available to Win64 machines** check box (if this option is available).

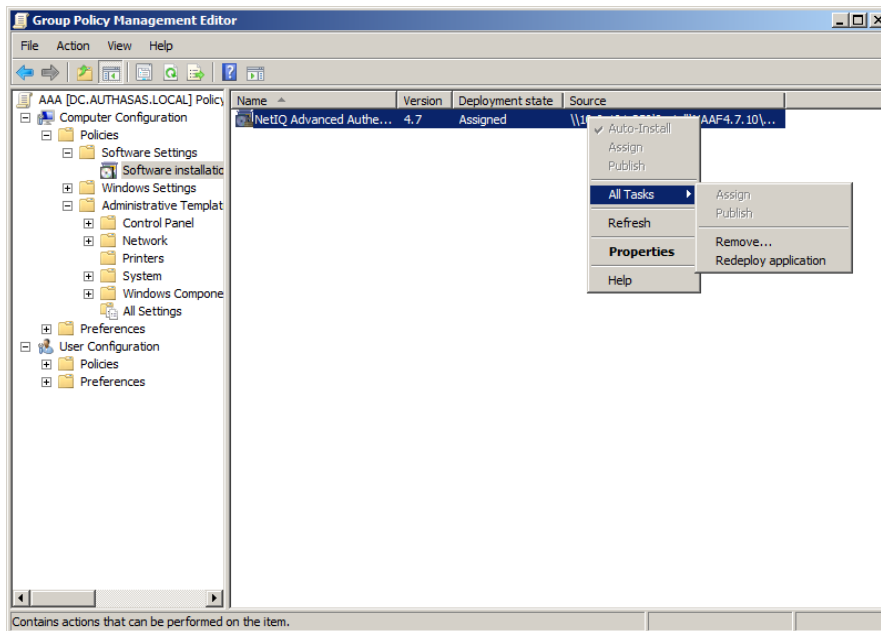
6. Add appropriate 64-bit installer to this group policy object and use settings 5a)-5b).

 The assigned package is installed after you have updated the domain policy and restarted your computer. To update the domain policy immediately, use the `gpupdate /force` command.

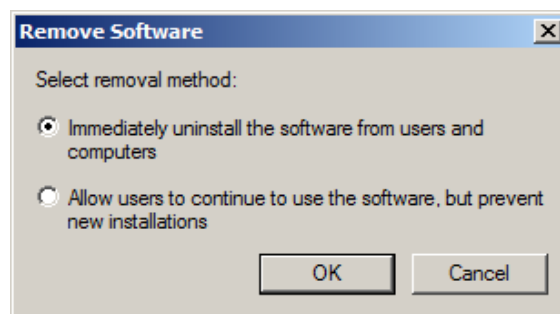
Removing Card Authentication Provider via Group Policy

To remove Card authentication provider using the group policy:

1. In GPME, under **Computer Configuration > Software Settings > Software installation**, right-click the deployed package and select **All tasks > Remove**.



2. In the **Remove Software** dialog, select the **Immediately uninstall the software from users and computers** option and click **OK**.



* The package is removed after you have updated the domain policy and restarted your computer. To update the domain policy immediately, use the `gpupdate /force` command.

* If you have cleared the **Uninstall this application when it falls out of the scope of management** check box as it was recommended, software will not be uninstalled after selecting the

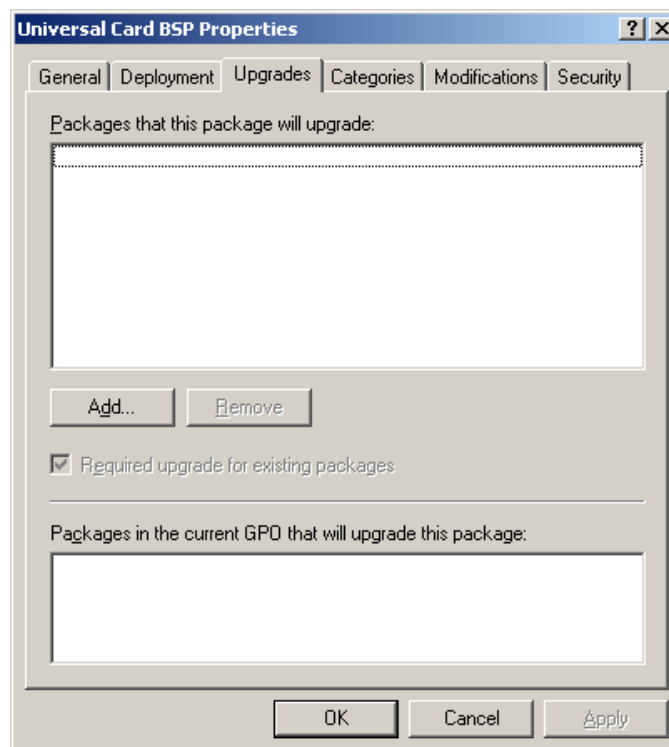
Immediately uninstall the software from users and computers option. In this case, you will need to uninstall it via **Programs and Features/Add or remove programs**.

Upgrading Card Authentication Provider via Group Policy

Option 1: You can add .msi package with new component version to an existing group policy object. However, this option does not prove to be good, because in case of any problems in new version of component, these problems spread on all computers in installation group.

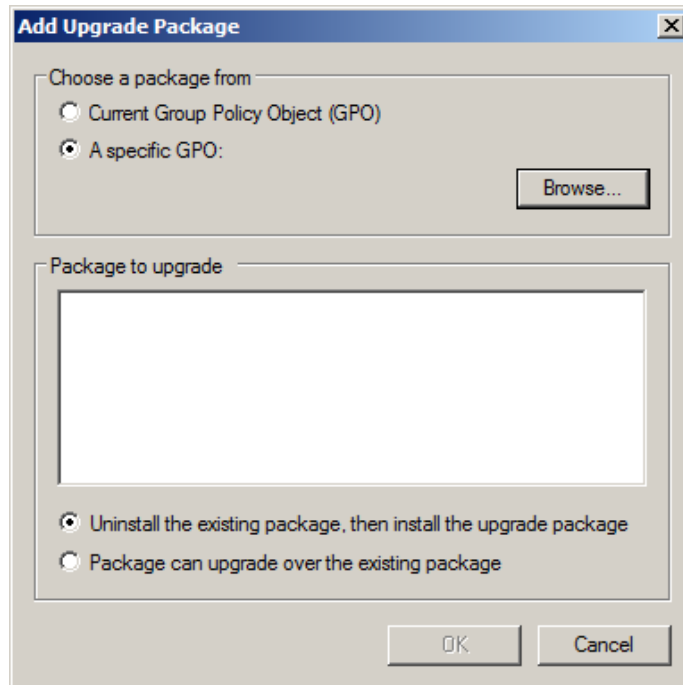
Option 2: The more reliable upgrading procedure implies creating new group policy object for new installers:

1. Create new installation group and new Group Policy Object (GPO), add a new .msi package in it.
2. After having configured software installation, go to the **Upgrades** tab of package properties.



3. Click the **Add** button.


4. In the **Add Upgrade Package** dialog select the **A specific GPO** option.



5. Select a GPO which was used for installation of previous NetIQ Advanced Authentication Framework version.

6. Select .msi package name.

7. Select the **Uninstall the existing package, then install the upgrade package** option.

 Make sure that your new GPO is above the old one in the GPO list.

Troubleshooting

i This chapter provides solutions for known issues. If you encounter any problems that are not mentioned here, please contact the support service.

Cannot Install Card Authentication Provider

Description:

Error appears when installing card authentication provider on your computer.

Cause:

- a. You have no space left on the disk.
- b. You are installing card authentication provider on the OS with the wrong bitness.
- c. You are installing card authentication provider before installing NetIQ Advanced Authentication Framework.

Solution:

- a. Free the amount of disk space needed for installation.
- b. Check your OS's bitness (x64/x86) and run the corresponding installer (x64/x86).
- c. Install NetIQ Advanced Authentication Framework first.

Index

A

Authentication 1, 3-5, 7, 12, 20-21
Authenticator 3

C

Card 1, 3-7, 9-10, 12-13, 17, 19, 21
Client 3
Console 12
Control 6
Control panel 6
Create 12, 19

D

Default 12
Domain 12

E

Error 21

G

GPMC 12
GPME 12-13, 17

L

Logon 3

M

Microsoft Windows Server 2003 6, 12
Microsoft Windows Server 2008 4

P

Package 13, 19
Policy 7-10, 12, 14

R

Remove 6, 17

S

Security 12
Server 4
Settings 6
Software 13, 17
System 4

W

Windows 7 4, 6
Windows 8 6