



# NetIQ Advanced Authentication Framework

## **Lumidigm+Card Authentication Provider Installation Guide**

Version 5.1.0

# Table of Contents

	<b>1</b>
<b>Table of Contents</b> .....	<b>2</b>
<b>Introduction</b> .....	<b>3</b>
About This Document .....	3
<b>System Requirements</b> .....	<b>4</b>
<b>Installing and Removing Lumidigm+Card Authentication Provider</b> .....	<b>5</b>
Pre-installation Procedure .....	5
Installing Lumidigm+Card Authentication Provider .....	6
Removing Lumidigm+Card Authentication Provider .....	7
Microsoft Windows Server 2008 .....	7
Microsoft Windows Server 2003 .....	7
<b>Installing and Removing Lumidigm+Card Authentication Provider via Group Policy</b> ...	<b>8</b>
Installing Lumidigm+Card Authentication Provider via Group Policy .....	9
Removing Lumidigm+Card Authentication Provider via Group Policy .....	13
Upgrading Lumidigm+Card Authentication Provider via Group Policy .....	15
<b>Troubleshooting</b> .....	<b>17</b>
Cannot Install Lumidigm+Card Authentication Provider .....	17
<b>Index</b> .....	<b>18</b>

# Introduction

## About This Document

### Purpose of the Document

This Lumidigm+Card Authentication Provider Installation Guide is intended for all user categories and describes how to use the client part of NetIQ Advanced Authentication Framework solution. In particular, it gives instructions as for how to install Lumidigm+Card type of authentication.

For more general information on NetIQ Advanced Authentication Framework™ and the authentication software you are about to use, see NetIQ Advanced Authentication Framework – Client User's Guide.

Information on managing other types of authenticators is given in separate guides.

### Document Conventions



**Warning.** This sign indicates requirements or restrictions that should be observed to prevent undesirable effects.



**Important notes.** This sign indicates important information you need to know to use the product successfully.



**Notes.** This sign indicates supplementary information you may need in some cases.



**Tips.** This sign indicates recommendations.

- Terms are italicized, e.g.: ***Authenticator***.
- Names of GUI elements such as dialogs, menu items, buttons are put in bold type, e.g.: the **Logon** window.

## System Requirements

Before installing the product, check that the following system requirements are fulfilled:

- Microsoft Windows 7 (x64/x86) SP1;
- Microsoft Windows 2008 Server R2 SP1/ Microsoft Windows 2003 Server (x64/x86) SP2/  
Microsoft Windows 2003 Server R2 (x64/x86) SP2;
- Lumidigm+Card authentication provider should be installed on the computer with already installed NetIQ Advanced Authentication Framework.



This authentication provider should be installed on **every** Authenticore Server.

# Installing and Removing Lumidigm+Card Authentication Provider

NetIQ Advanced Authentication Framework™ package includes Lumidigm+Card Authentication Provider, which allows you to use Lumidigm hardware and card reading authentication devices.

## Pre-installation Procedure

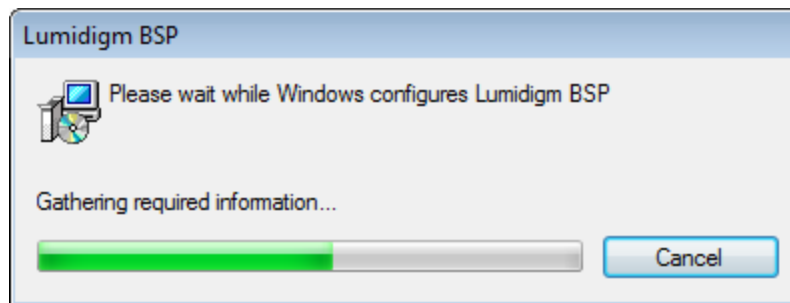
Before installing Lumidigm+Card authentication provider you should make preparations. Follow the steps below and complete all pre-installation activities:

1. Mind that you should run the file that corresponds to the bitness of your computer (either [x64](#) or [x86](#)).
2. Install Lumi\_NON\_STR\_Drivers\_Setup\_5.00.exe and LumiDvcSvc\_5.00.exe from authenticators distributive kit.
3. Install drivers for Contact/Contactless Card reader.

## Installing Lumidigm+Card Authentication Provider

To install Lumidigm+Card Authentication Provider:

1. Run the .exe file. **Lumidigm+Card Authentication Provider** will be automatically installed on your computer.



- \* The start of installation may be frozen for a time up to 1 minute in the case of offline mode. This delay occurs due to check of digital signature of component.
- \* For your Lumidigm fingerprint reader to work properly, you should install the corresponding driver. The driver should be installed on the client part.

## Removing Lumidigm+Card Authentication Provider

In this chapter:

- [Microsoft Windows Server 2008](#)
- [Microsoft Windows Server 2003](#)


### Microsoft Windows Server 2008

1. In the **Start** menu, select **Control panel** and then double-click **Programs and Features**.
2. Select **Lumidigm+Card Authentication Provider** and click **Uninstall**.
3. Confirm the removal.
4. Wait a few seconds until the removal is completed.

### Microsoft Windows Server 2003


1. In the **Start** menu, select **Settings > Control Panel > Add or Remove Programs**.
2. Select **Lumidigm+Card Authentication Provider** and click **Remove**.
3. Confirm the removal.

# Installing and Removing Lumidigm+Card Authentication Provider via Group Policy

 It is recommended for Microsoft Windows Server 2003 users to install **Group Policy Management Console**.

To install/remove NetIQ Advanced Authentication Framework Modules, use:

- **Group Policy Management Console (GPMC)**, which is installed by default on a Domain Controller. To open GPMC, click **Start** and select **Administrative Tools > Group Policy Management**.
- **Group Policy Management Editor (GPME)**, which can be opened from GPMC. To open GPME, under domain right-click the group policy object (GPO) you are using to install the software and select **Edit**.

 It is highly recommended that you do not use **Default Group Policy**, because it is applicable to entire domain. It is not recommended to install/upgrade client components for all workstations at the same time.

To create new Group Policy and configure it:

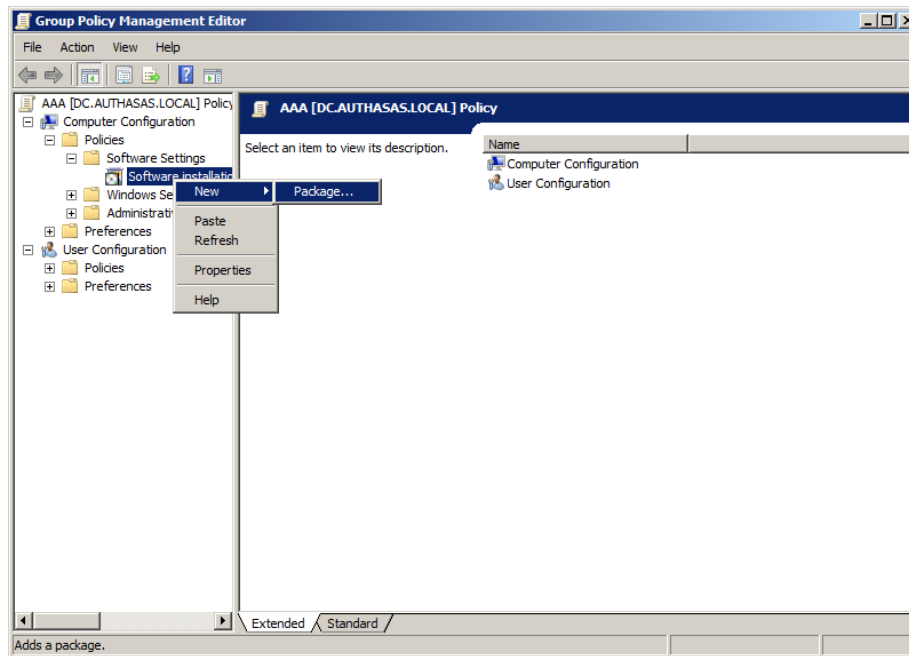
1. Create new global security group and new group policy object.
2. Connect them:
  - a. Open created group policy object properties;
  - b. Go to the **Security** tab;
  - c. Clear the **Apply Group Policy** check box for the **Authenticated Users** group;
  - d. Add created group and select the **Apply Group Policy** check box for it.



## Installing Lumidigm+Card Authentication Provider via Group Policy

To install an Lumidigm+Card authentication provider using the group policy:

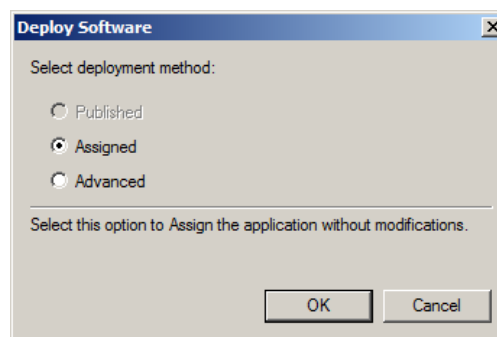
1. In GPME, in the selected GPO under **Computer configuration > Policies > Software Settings**, right-click **Software Installation** and select **New > Package**.



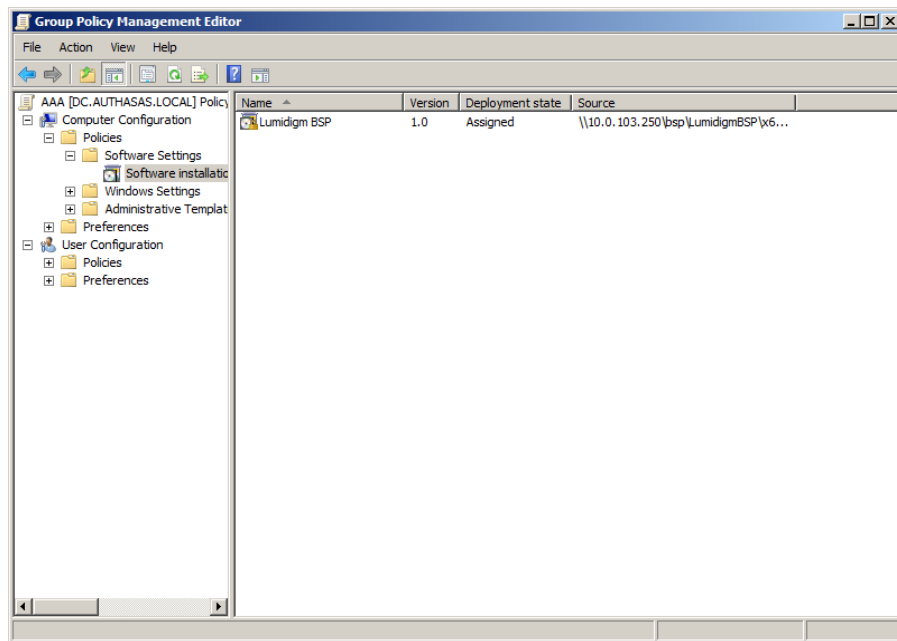
2. Specify the network path to the installer package.

 The directory you are willing to install should be located on network drive.

3. In the **Deploy Software** dialog, select the **Assigned** option and click **OK**.

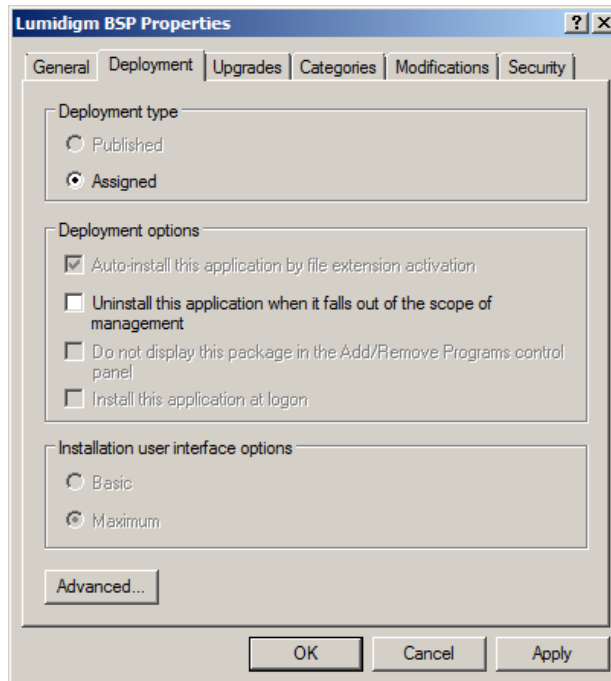


4. The installer package name, version, state and path are displayed in **Group Policy Management Editor**.

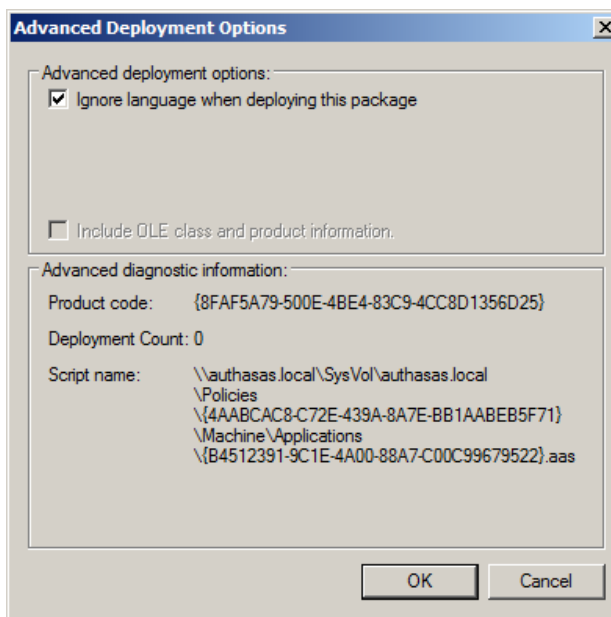


5. Open package properties:

a) On the **Deployment** tab: clear the **Uninstall this application when it falls out of the scope of management** check box. It is done to prevent undesirable uninstallation in case of problems as well as for the upgrade to go properly.




b) On the **Deployment** tab: click the **Advanced** button and select the **Ignore language when deploying this package** check box. If you do not select this check box, the package will be installed only on OS with package's language.



c) Clear the **Make this 32-bit X86 application available to Win64 machines** check box (if this option is available).

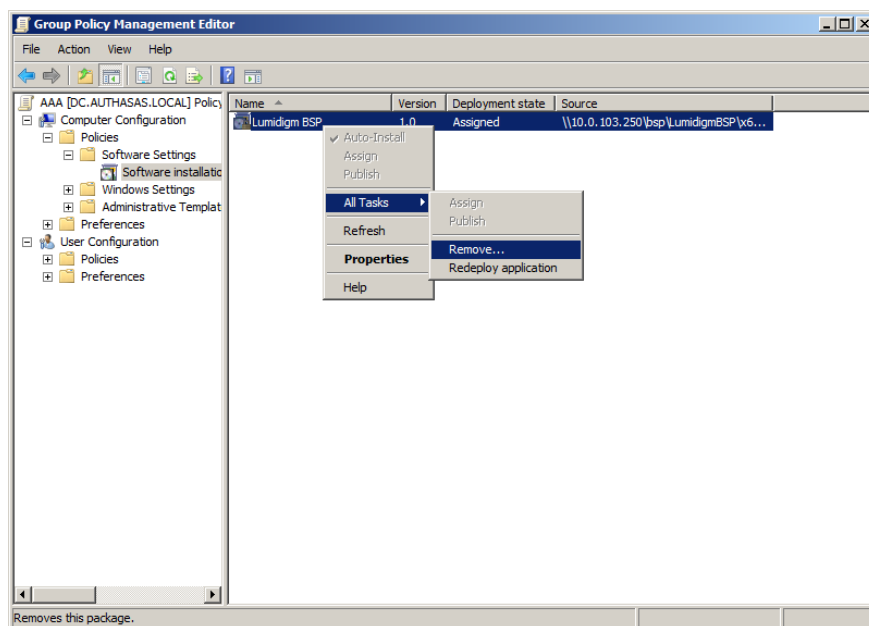
6. Add appropriate 64-bit installer to this group policy object and use settings 5a)-5b).

 The assigned package is installed after you have updated the domain policy and restarted your computer. To update the domain policy immediately, use the `gpupdate /force` command.

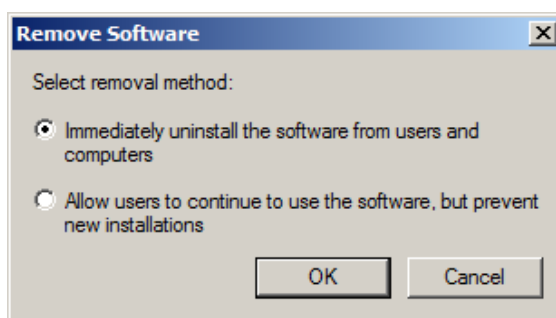
## Removing Lumidigm+Card Authentication Provider via Group Policy

To remove Lumidigm+Card authentication provider using the group policy:

1. In GPME, under **Computer Configuration > Software Settings > Software installation**, right-click the deployed package and select **All tasks > Remove**.



2. In the **Remove Software** dialog, select the **Immediately uninstall the software from users and computers** option and click **OK**.



- \* The package is removed after you have updated the domain policy and restarted your computer. To update the domain policy immediately, use the `gpupdate /force` command.
- \* If you have cleared the **Uninstall this application when it falls out of the scope of management** check box as it was recommended, software will not be uninstalled after selecting the

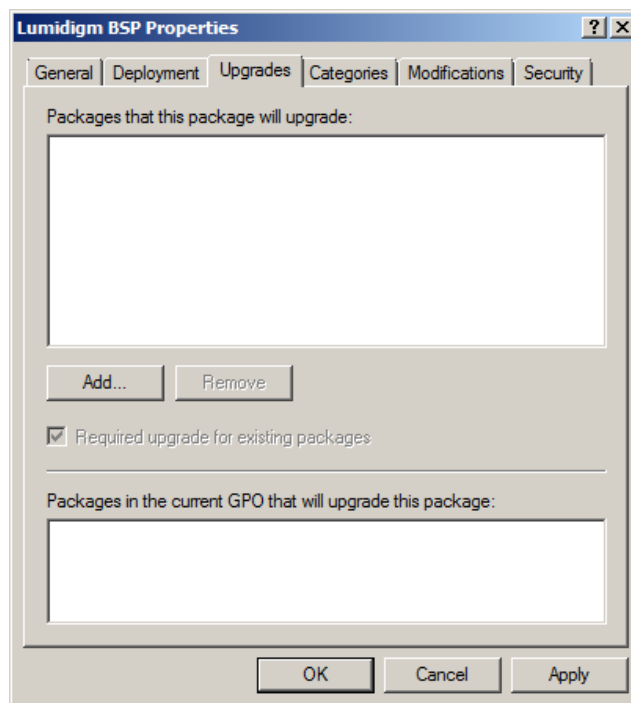
**Immediately uninstall the software from users and computers** option. In this case, you will need to uninstall it via **Programs and Features/Add or remove programs**. See the [Removing Lumidigm+Card Authentication Provider](#) chapter.

## Upgrading Lumidigm+Card Authentication Provider via Group Policy

**Option 1:** You can add .msi package with new component version to an existing group policy object. However, this option does not prove to be good, because in case of any problems in new version of component, these problems spread on all computers in installation group.

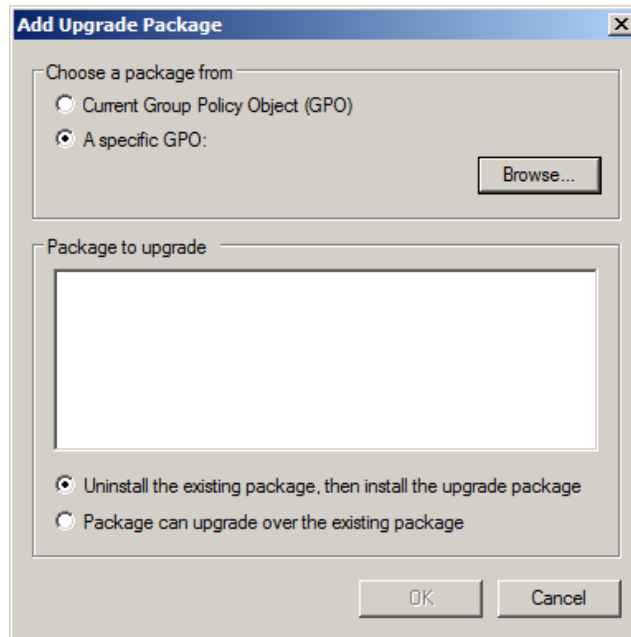
**Option 2:** The more reliable upgrading procedure implies creating new group policy object for new installers:

1. Create new installation group and new Group Policy Object (GPO), add a new .msi package in it.
2. After having configured software installation, go to **Upgrades** tab of package properties.



3. Click **Add** button.


4. In **Add Upgrade Package** dialog please select **A specific GPO** option.



5. Select a GPO which was used for installation of previous NetIQ Advanced Authentication Framework version.

6. Select .msi package name.

7. Select option **Uninstall the existing package, then install the upgrade package**.

 Make sure that your new GPO is above the old one in the GPO list.



## Troubleshooting

**i** This chapter provides solutions for known issues. If you encounter any problems that are not mentioned here, please contact the support service.

### Cannot Install Lumidigm+Card Authentication Provider

#### **Description:**

Error appears when installing Lumidigm+Card authentication provider on your computer.

#### **Cause:**

- a. You are installing Lumidigm+Card authentication provider on the network drive.
- b. You have no space left on the disk.
- c. You are installing Lumidigm+Card authentication provider on the OS with the wrong bitness.

#### **Solution:**

- a. Change the installation path.
- b. Free the amount of disk space needed for installation.
- c. Check your OS's bitness (x64/x86) and run the corresponding installer (x64/x86).

# Index

---

## A

Authentication 1, 3-6, 8, 14, 16  
Authenticator 3

## C

Card 3, 5-6, 9, 13, 17  
Client 3  
Console 8  
Control panel 7  
Create 8, 15

## D

Default 8  
Domain 8

## E

Error 17

## G

GPMC 8  
GPME 8-9, 13

## L

Logon 3  
Lumidigm 1, 3-9, 13, 15, 17

## M

Microsoft Windows Server 2003 7-8  
Microsoft Windows Server 2008 7

## P

Package 9, 15  
Policy 8, 10

## R

Remove 7, 13

---

## S

Security 8  
Server 4  
Settings 7  
Software 9, 13  
System 4

## W

Windows 4  
Windows 7 4