



NetIQ Advanced Authentication Framework

Hitachi Fingervein+Card Authentication Provider User's Guide

Version 5.1.0

Table of Contents

	1
Table of Contents	2
Introduction	3
About This Document	3
Managing Hitachi Fingervein+Card Authenticator	4
Microsoft Windows Vista/7/Microsoft Windows Server 2008/2008 R2	4
Microsoft Windows Server 2003	7
Microsoft Windows 8/Microsoft Windows Server 2012	9
Enrolling Hitachi Fingervein+Card Authenticator	11
Re-enrolling Hitachi Fingervein+Card Authenticator	14
Testing Hitachi Fingervein+Card Authenticator	15
Removing Hitachi Fingervein+Card Authenticator	17
Logon with Hitachi Fingervein+Card Authenticator	19
Troubleshooting	20
Cannot Enroll Hitachi Fingervein+Card Authenticator	20

Introduction

About This Document


Purpose of the Document


This Hitachi Fingervein+Card Authentication Provider User's Guide is intended for all user categories and describes how to use the client part of NetIQ Advanced Authentication Framework solution. In particular, it gives instructions as for how to manage Hitachi Fingervein+Card type of authentication.

For more general information on NetIQ Advanced Authentication Framework™ and the authentication software you are about to use, see NetIQ Advanced Authentication Framework – Client User's Guide.

Information on managing other types of authenticators is given in separate guides.

Document Conventions

 **Warning.** This sign indicates requirements or restrictions that should be observed to prevent undesirable effects.

 **Important notes.** This sign indicates important information you need to know to use the product successfully.

 **Notes.** This sign indicates supplementary information you may need in some cases.

 **Tips.** This sign indicates recommendations.

- Terms are italicized, e.g.: ***Authenticator***.
- Names of GUI elements such as dialogs, menu items, buttons are put in bold type, e.g.: the **Logon** window.

Managing Hitachi Fingervein+Card Authenticator

In this chapter:

- [Microsoft Windows Vista/7/Microsoft Windows Server 2008/2008 R2](#)
- [Microsoft Windows Server 2003](#)
- [Microsoft Windows 8/Microsoft Windows Server 2012](#)

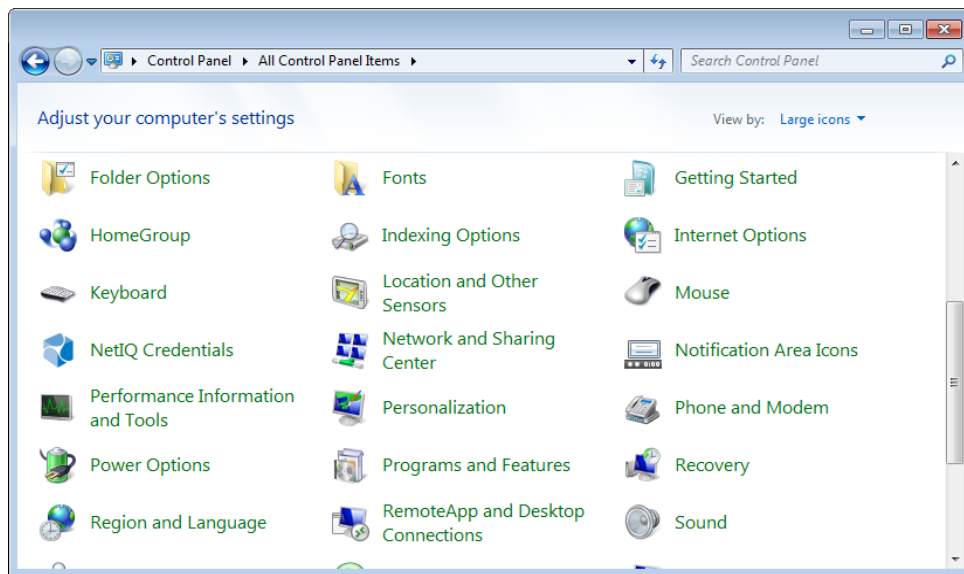
Microsoft Windows Vista/7/Microsoft Windows Server 2008/2008 R2

Authenticator management options are available in the **Authenticators** window.

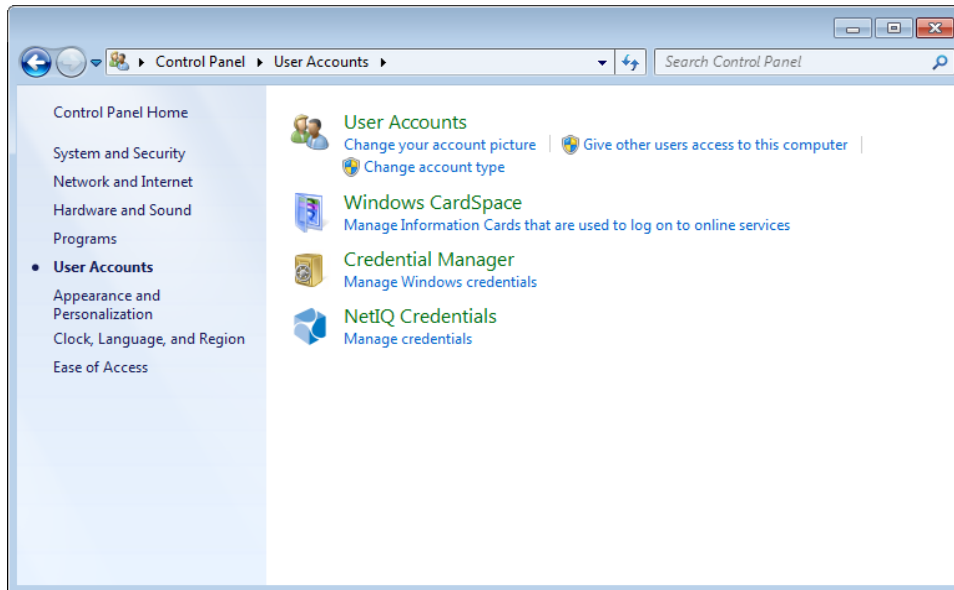
i The **Authentication Wizard** window is shown at system start if there are no enrolled authenticators.

To open the **Authenticators** window from **Control Panel**:

- In classic view of **Control Panel** select **NetIQ Credentials** item.




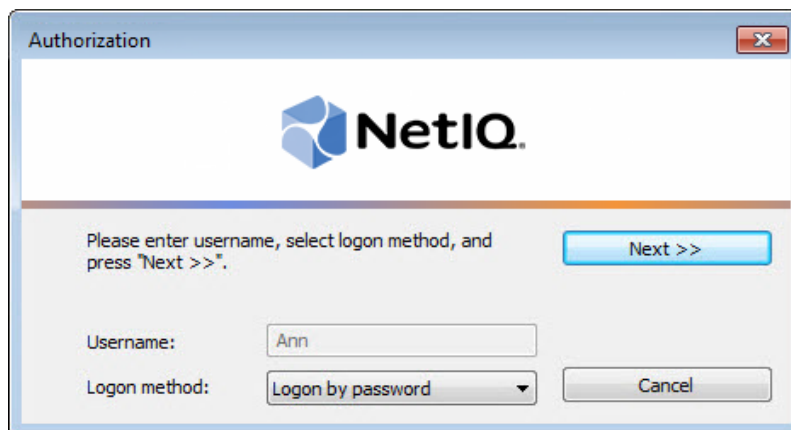
- In **Control Panel** by categories select **User Accounts > NetIQ Credentials**.



To open **Authenticators** window, user should undertake authorization procedure:

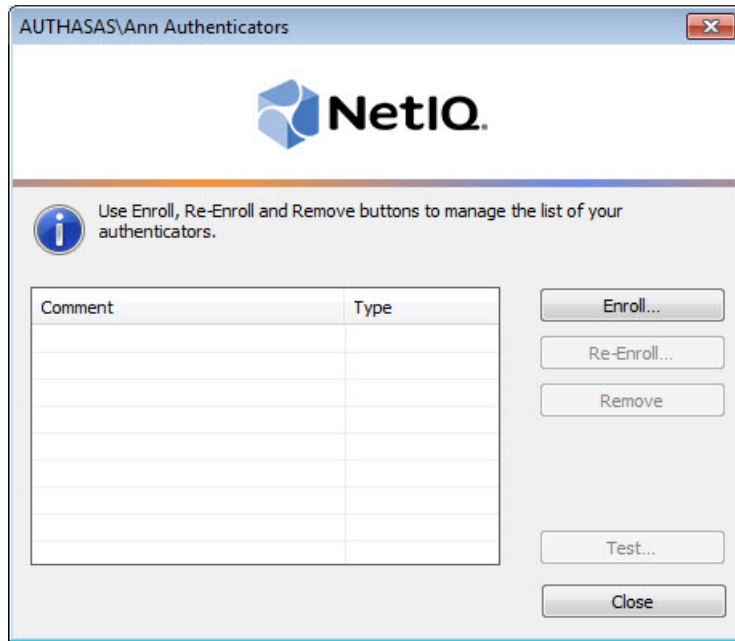
1. In the **Authorization** window, choose authentication method.

 If there are no enrolled authenticators, then the only way to get authorized is **By password**. Otherwise, authentication by password will make enrollment unavailable (i.e. the button **Enroll**, **Re-enroll** and **Remove** will be greyed out).



2. Get authenticated with the selected method.

3. Once you are authenticated, page for managing authenticators is opened.

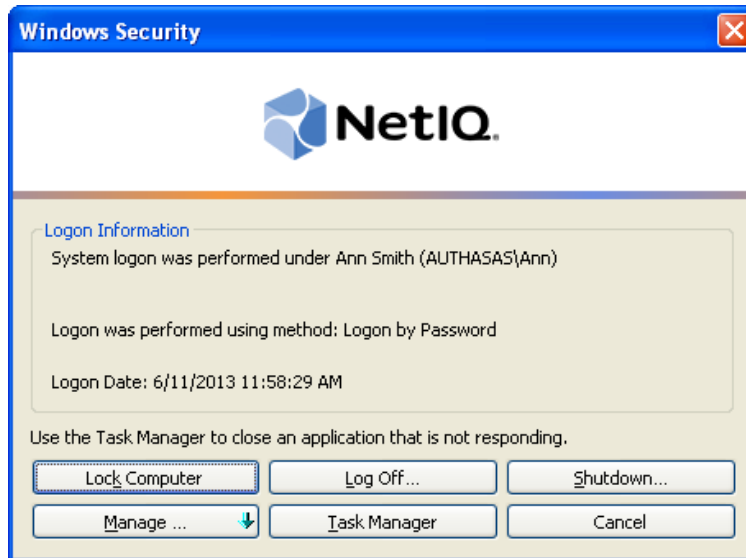


Microsoft Windows Server 2003

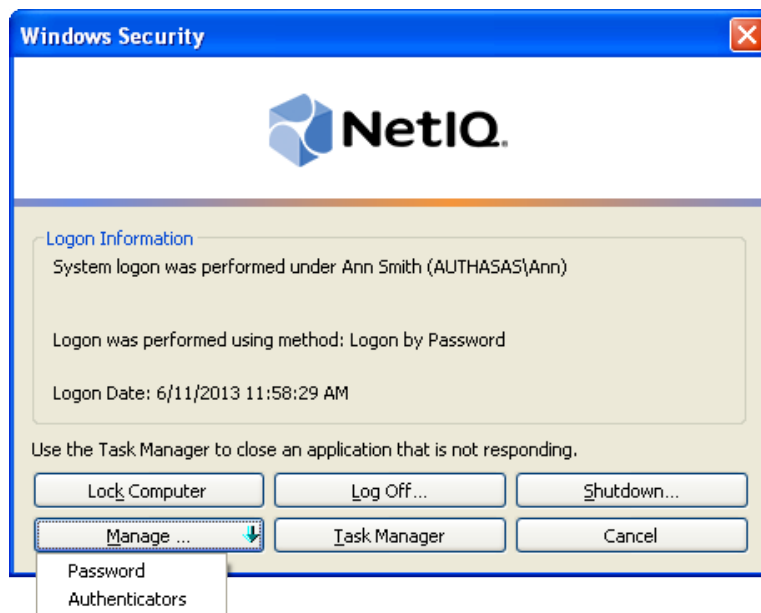
Authenticator management options are available in the **Authenticators** window.

To open the **Authenticators** window:

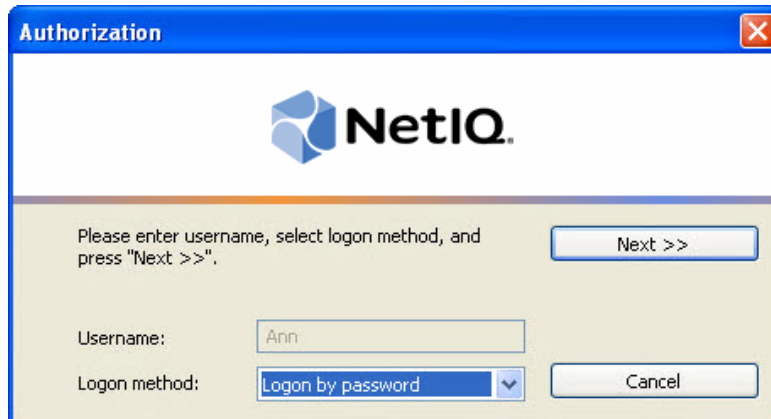
1. From your desktop, press **[Ctrl]+[Alt]+[Del]**. The **Windows Security** window is displayed.




2. Click **Manage** and select **Authenticators**.




3. The **Authorization** window is displayed.

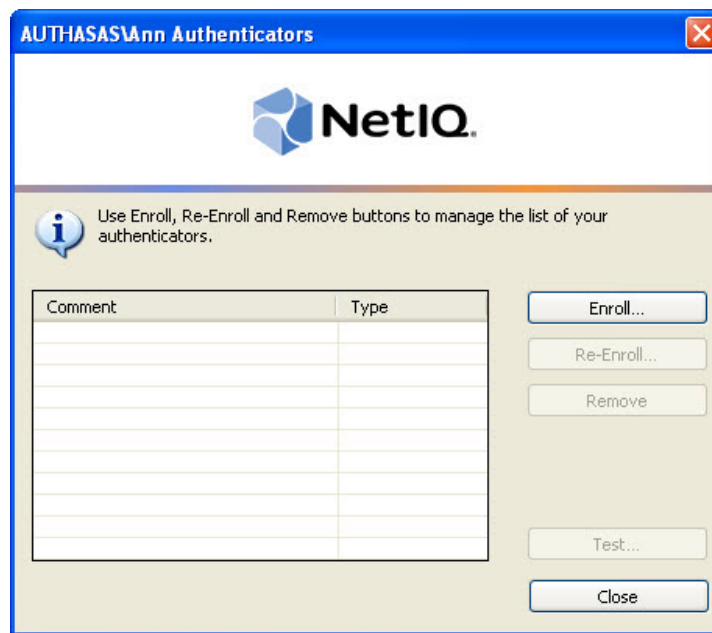


- From the **Logon method** list, select a logon method (an authenticator type or **Logon by password**).
- Click **Next**.

 To be able to add, re-enroll or remove an authenticator, you should use an authenticator as logon method.

 To be able to test an authenticator, you may use either authenticator or password as logon method.

After successful authentication the **Authenticators** window is displayed.

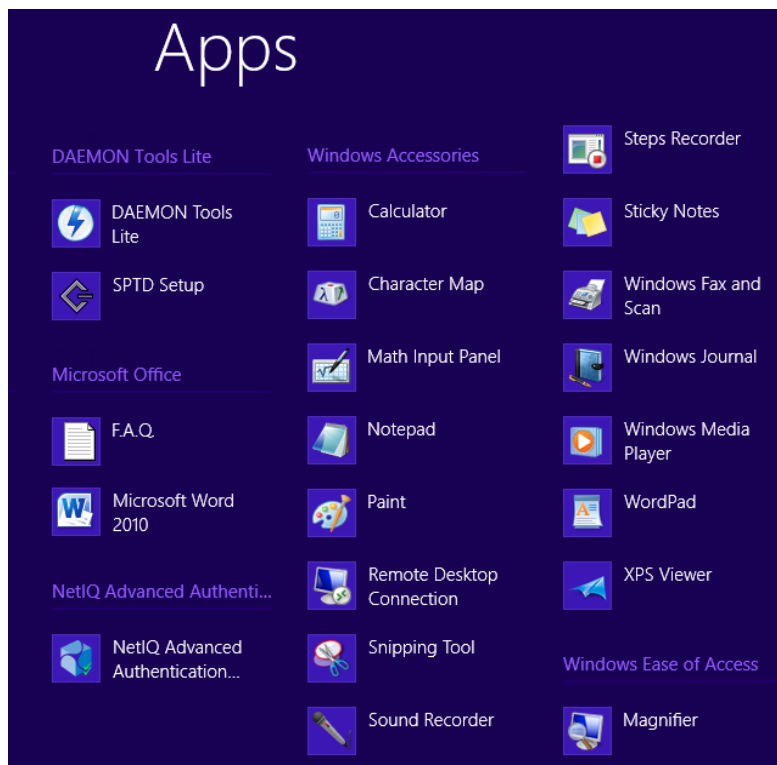


Microsoft Windows 8/Microsoft Windows Server 2012

Authenticator management options are available in the **Authenticators** window.


The **Authentication Wizard** window is shown at system start if there are no enrolled authenticators.

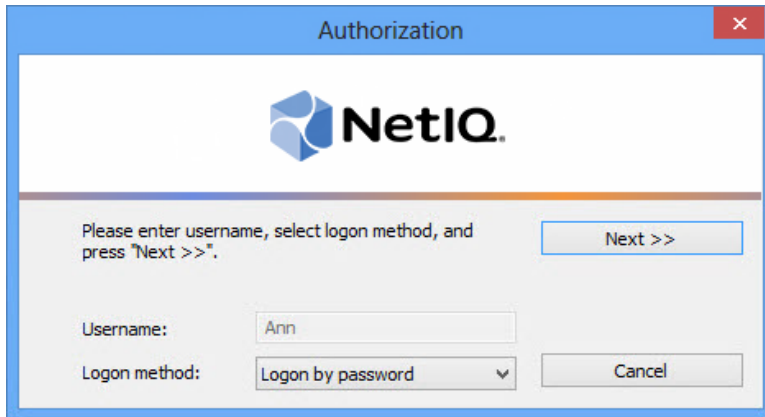
To open the **Authenticators**, in the **Search** menu select **Apps > NetIQ Advanced Authentication Framework...**



To open **Authenticators** window, user must undertake authorization procedure.

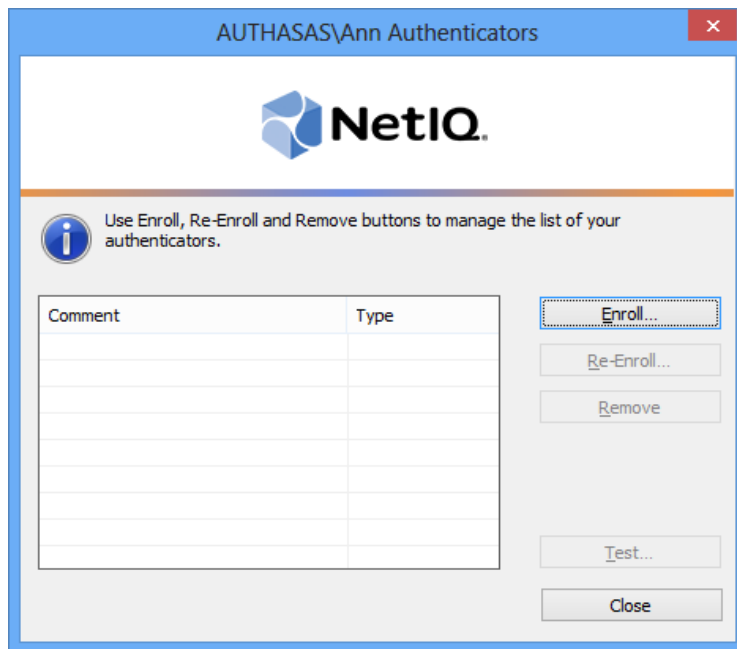
1. In the **Authorization** window, choose authentication method.

 If there are no enrolled authenticators, then the only way to get authorized is **By password**. Otherwise, authentication by password will make enrollment unavailable (i.e. the button **Enroll**, **Re-enroll** and **Remove** will be greyed out).





2. Get authenticated with the selected method.

3. Once you are authenticated, page for managing authenticators is opened.



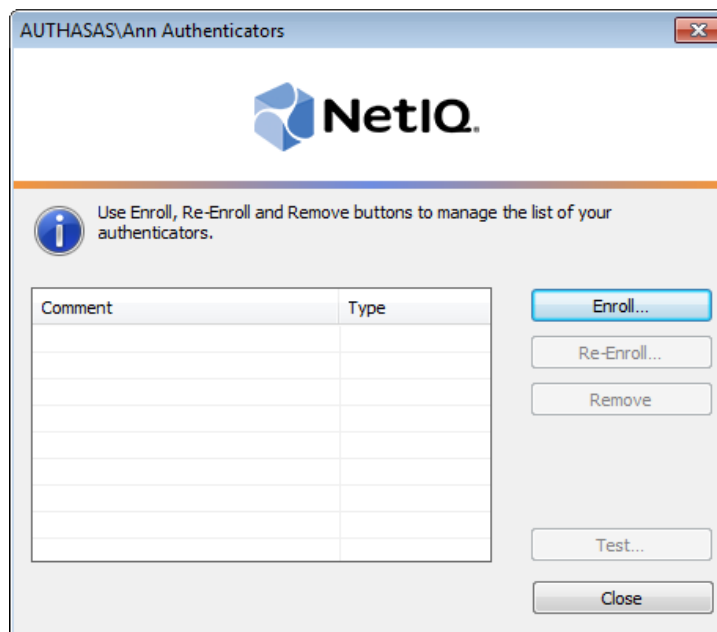
Enrolling Hitachi Fingervein+Card Authenticator

 This operation may be forbidden by NetIQ administrator. In such cases the **Enroll** button in the **Authenticators** window is greyed out.

 NetIQ administrator defines the maximum number of authenticators you can have which means you cannot enroll any more authenticators once you have reached the limit.

To enroll a Hitachi Fingervein+Card authenticator:

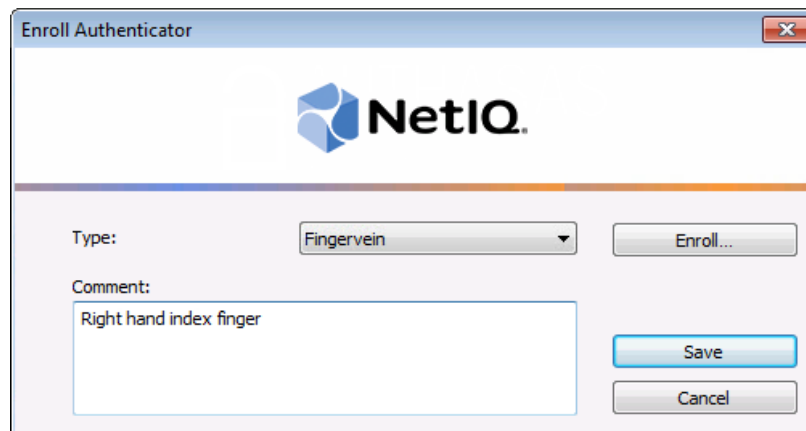
1. Click **Enroll...** button in the **Authenticators** window.




2. When the **Enroll Authenticator** window appears, select **Fingervein** from the **Type** drop-down menu, click **Enroll...**

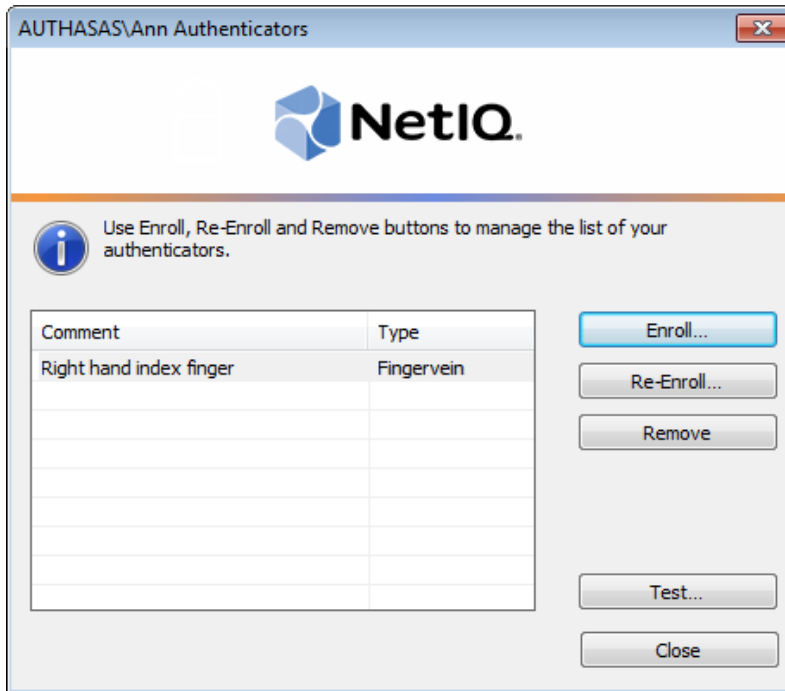


3. Select the finger to enroll. Place the finger you selected on the reader until the wizard gives you a confirmation.
4. Present the card to the reader until the wizard gives you confirmation.
5. Control is passed to the **Enroll Authenticator** window. Entering commentary is optional. Click **Save**.




 Entering and editing comments may be forbidden by the system administrator.

6. A new authenticator is created and is visible in the list of authenticators in the **Authenticators** window.

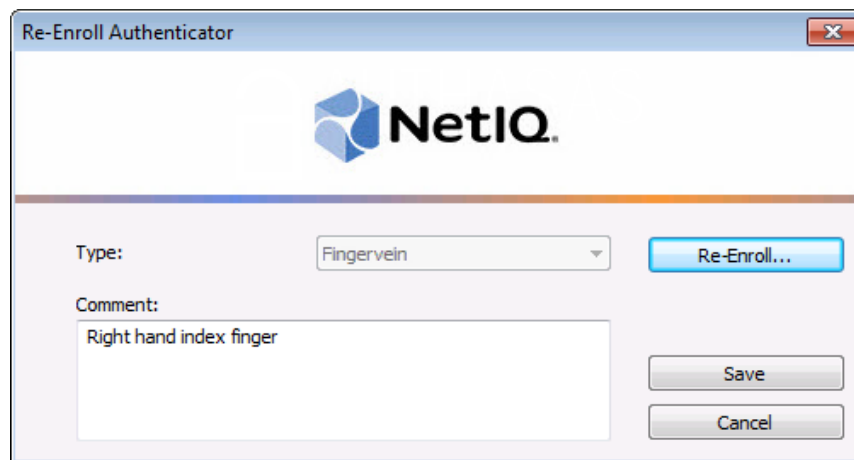


Re-enrolling Hitachi Fingervein+Card Authenticator

 This operation may be forbidden by NetIQ administrator. In such cases the **Re-Enroll** button in the **Authenticators** window is greyed out.

In order to re-enroll a created Hitachi Fingervein+Card authenticator:

1. Select **Fingervein** in the list of authenticators, click **Re-Enroll...** in the **Authenticators** window.
2. Click **Re-Enroll...** in the **Re-Enroll Authenticator** window.



The screenshot shows the 'Re-Enroll Authenticator' window with the NetIQ logo at the top. Below the logo, there is a 'Type:' dropdown menu set to 'Fingervein'. To the right of the dropdown is a blue 'Re-Enroll...' button. Below the dropdown is a 'Comment:' text box containing 'Right hand index finger'. To the right of the text box are 'Save' and 'Cancel' buttons.

3. Select the finger to enroll. Place the finger you selected on the reader until the wizard gives you a confirmation.
4. Present the card to the reader until the wizard gives you confirmation.
5. Control is passed to the **Re-Enroll Authenticator** window. Click **Save**.

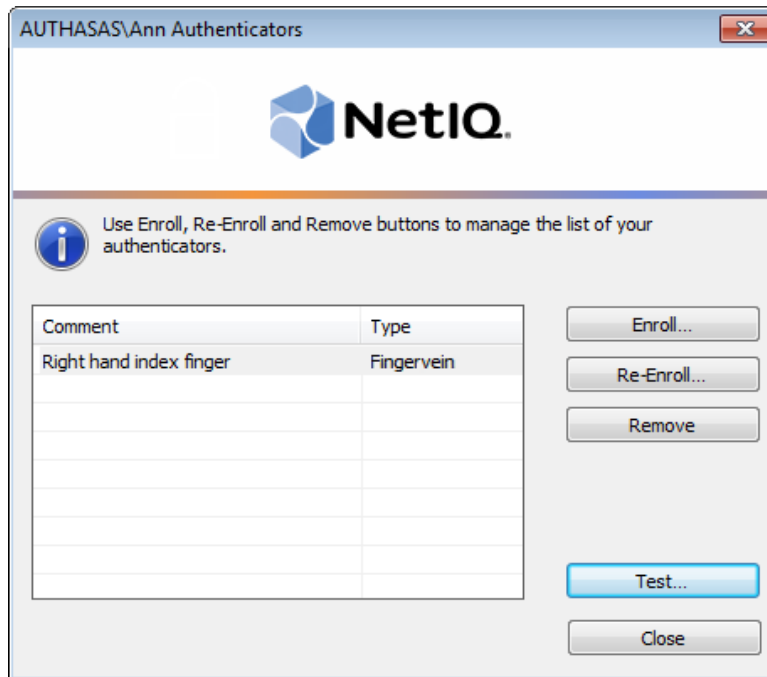


The screenshot shows the 'Re-Enroll Authenticator' window with the NetIQ logo at the top. Below the logo, there is a 'Type:' dropdown menu set to 'Fingervein'. To the right of the dropdown is a greyed-out 'Re-Enroll...' button. Below the dropdown is a 'Comment:' text box containing 'Right hand index finger'. To the right of the text box are 'Save' and 'Cancel' buttons, with the 'Save' button highlighted in blue.

Testing Hitachi Fingervein+Card Authenticator

To test a created Hitachi Fingervein+Card authenticator:

1. Click **Test...** in the **Authenticators** window.




2. The **Logon** window will be displayed. Place the enrolled finger and present the card to the reader.
3. When a confirmation message saying: "Authenticators match" appears, click **OK**.





4. When authenticators do not match, an error message appears. Click **OK**.



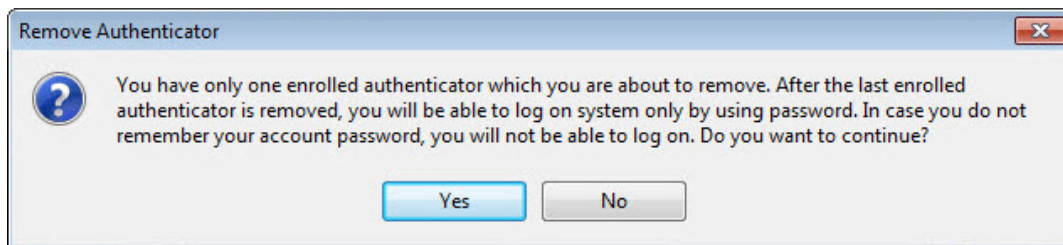
Removing Hitachi Fingervein+Card Authenticator

 This operation may be forbidden by the NetIQ administrator. In such cases the **Remove** button in the **Authenticators** window is greyed out.

 If you are allowed to remove your authenticator, do not do this just because you do not like your current authenticator. Instead, you can re-enroll it (see [Re-enrolling Hitachi Fingervein+Card Authenticator](#)).

 Do not remove the only authenticator you have. If you have no authenticators, you can log on with your password only. If a random password was generated for your account and you have removed the only authenticator, you cannot log on in any way.

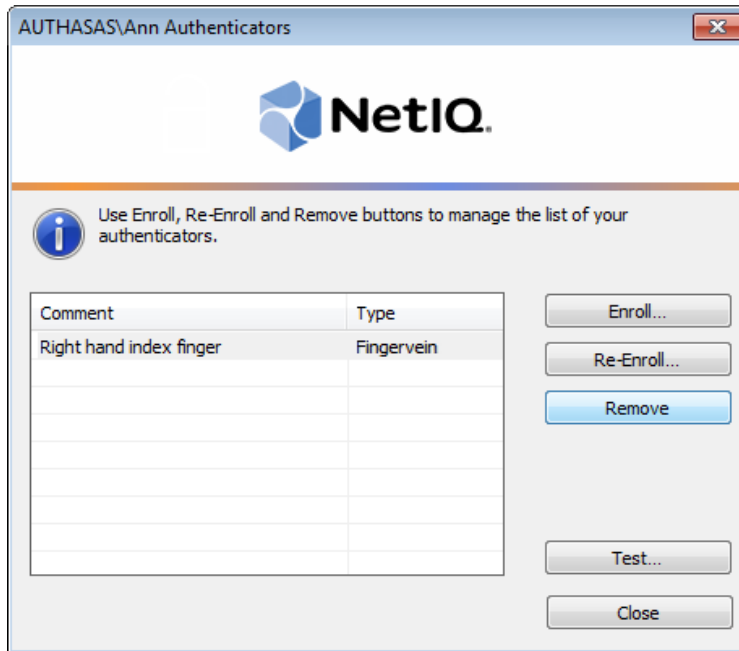
NetIQ Advanced Authentication Framework™ prevents you from accidentally removing your only authenticator by showing the following dialog:



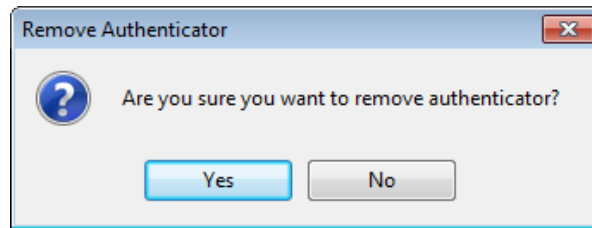
If you removed the only authenticator and do not know your password, contact the system administrator.

To remove an authenticator:

1. Click **Remove** in the **Authenticators** window.



2. If you have two or more authenticators enrolled a dialog box saying: "Are you sure you want to remove authentication?" appears. Click **Yes**.




The authenticator will be removed from the list of your authenticators.

Logon with Hitachi Fingervein+Card Authenticator

To log on using Hitachi Fingervein+Card authentication provider:

1. Start your computer. From logon screen, press **[Ctrl]+[Alt]+[Del]**.
2. If you want to select another user, click **Switch User**.
3. Select your user name if available or click **Other User**.
4. Type your user name (not needed unless **User** has been already selected).
5. Select **Fingervein** as a logon method. Place your finger on the reader.
6. Present the card to the reader.
7. Authentication using Hitachi Fingervein+Card authentication provider will be executed.

Troubleshooting

 This chapter provides solutions for known issues. If you encounter any problems that are not listed here, please contact the technical support service.

Cannot Enroll Hitachi Fingervein+Card Authenticator

Description:

Authenticator is not enrolled because:

- a. The **Type** list in the **Enroll Authenticators** window is empty or Hitachi Fingervein+Card authenticator type is absent.
- b. The **Enroll** button in the **Authenticators** window is greyed out.

Cause:

- a. The Hitachi Fingervein+Card authenticator type is not supported (no proper authentication provider is installed).
- b. The operation is forbidden or you have reached the limit on authenticators number.

Solution:

- a. Contact NetIQ administrator.
- b. No authenticators can be added. For more information, contact NetIQ administrator.