



NetIQ Advanced Authentication Framework

Authentec Authentication Provider User's Guide

Version 5.1.0

Table of Contents

	1
Table of Contents	2
Introduction	3
About This Document	3
Managing Authentec Fingerprint Authenticator	4
Microsoft Windows Vista/7/Microsoft Windows Server 2008/2008 R2	4
Microsoft Windows Server 2003	7
Enrolling Authentec Fingerprint Authenticator	10
Re-enrolling Authentec Fingerprint Authenticator	13
Testing Authentec Fingerprint Authenticator	15
Removing Authentec Fingerprint Authenticator	16
Logon Using Authentec Authentication Provider	18
Troubleshooting	20
Cannot Enroll Authenticator	21
Index	22

Introduction

About This Document

Purpose of the Document

This Authentec Authentication Provider User's Guide is intended for all user categories and describes how to use the client part of NetIQ Advanced Authentication Framework solution. In particular, it gives instructions as for how to manage (enroll, re-enroll, test) fingerprint authenticators if you have Authentec reader.

For more general information on NetIQ Advanced Authentication Framework™ and the authentication software you are about to use, see NetIQ Advanced Authentication Framework – Client User's Guide.

Information on managing other types of authenticators is given in separate guides.

Document Conventions



Warning. This sign indicates requirements or restrictions that should be observed to prevent undesirable effects.



Important notes. This sign indicates important information you need to know to use the product successfully.



Notes. This sign indicates supplementary information you may need in some cases.



Tips. This sign indicates recommendations.

- Terms are italicized, e.g.: ***Authenticator***.
- Names of GUI elements such as dialogs, menu items, buttons are put in bold type, e.g.: the **Logon** window.

Managing Authentec Fingerprint Authenticator

? Please select your operating system in the list below:

- [Microsoft Windows Vista/Microsoft Windows 7/Microsoft Windows Server 2008/Microsoft Windows Server 2008 R2](#)
- [Microsoft Windows Server 2003](#)

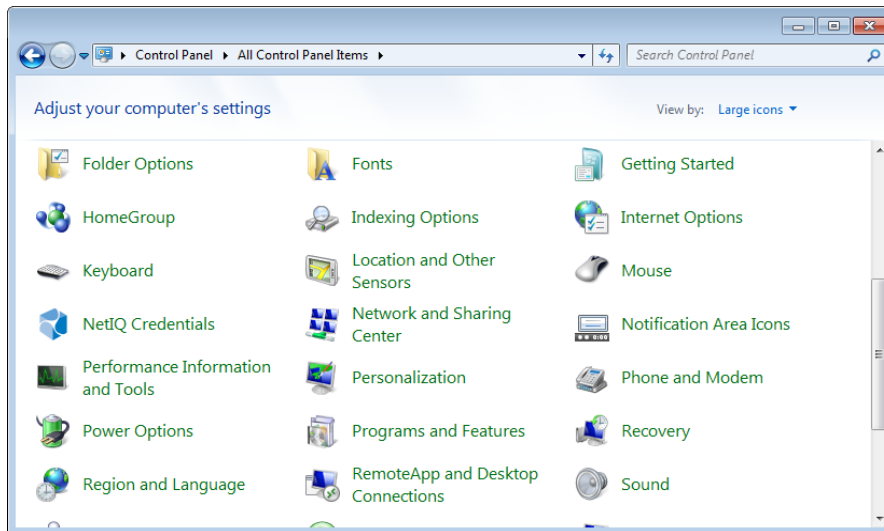
Microsoft Windows Vista/7/Microsoft Windows Server 2008/2008 R2

Authenticator management options are available in the **Authenticators** window.

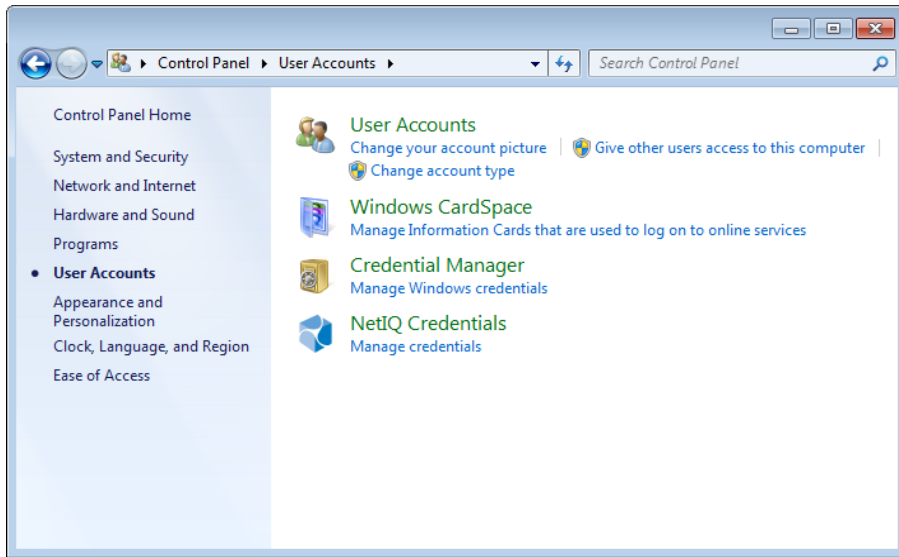
i The **Authentication Wizard** window is shown at system start if there are no enrolled authenticators.

To open the **Authenticators** window from **Control Panel**:

- In classic view of control panel select **NetIQ Credentials** item.




- In **Control Panel** by categories select **User Accounts > NetIQ Credentials**.



To open **Authenticators** window, user should undertake authorization procedure:

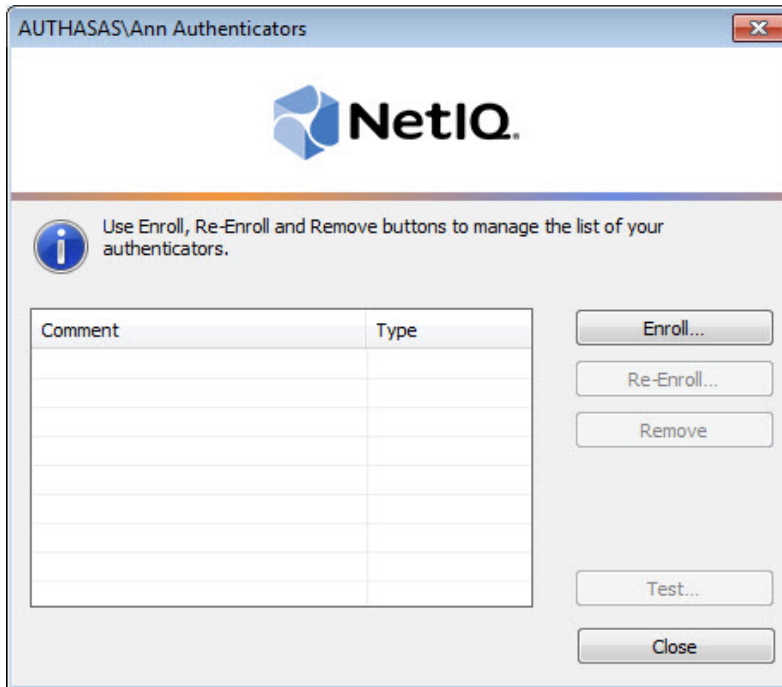
1. In the **Authorization** window, choose authentication method.

 If there are no enrolled authenticators, then the only way to get authorized is **By password**. Otherwise, authentication by password will make enrollment unavailable (i.e. the button **Enroll**, **Re-enroll** and **Remove** will be greyed out).



2. Get authenticated with the selected method.

3. Once you are authenticated page for managing authenticators is opened.

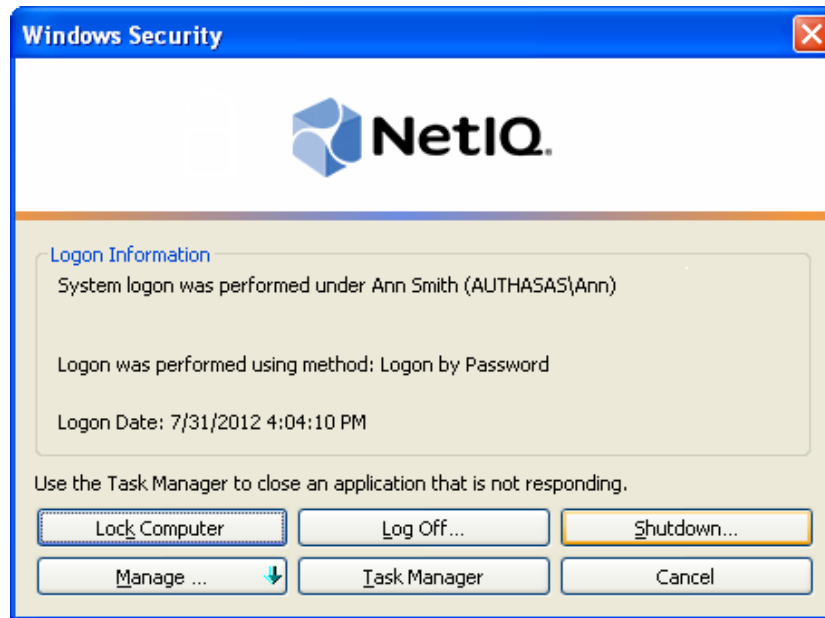


Microsoft Windows Server 2003

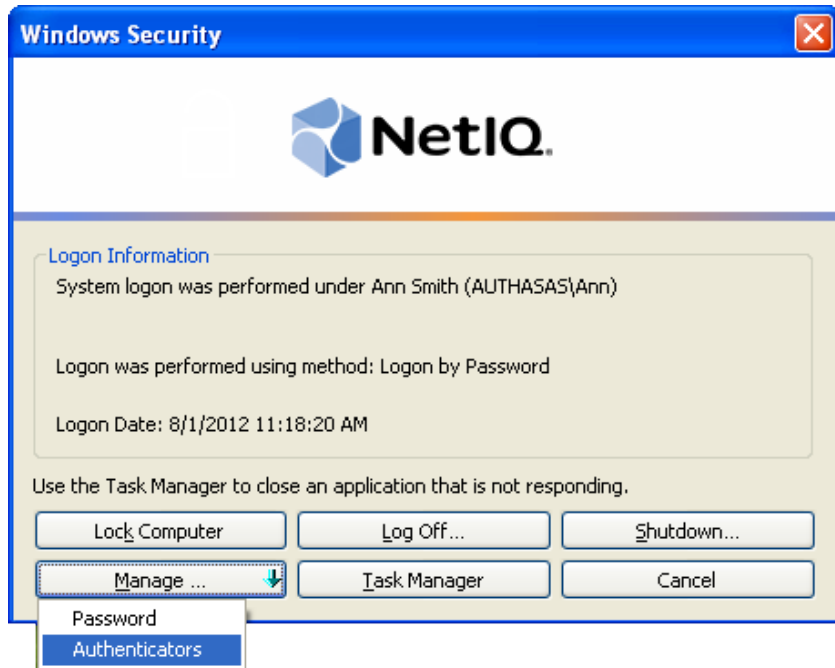
Authenticator management options are available in the **Authenticators** window.

To open the **Authenticators** window:

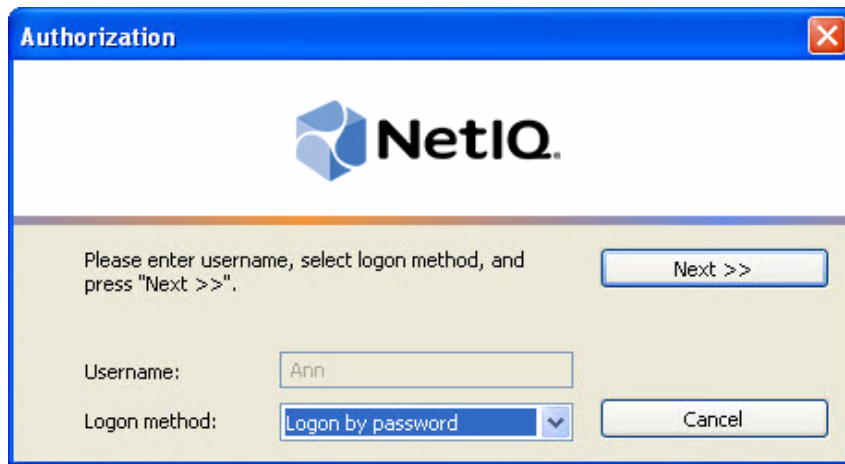
1. From your desktop, press **[Ctrl]+[Alt]+[Del]**. The **Windows Security** window is displayed.



2. Click **Manage** and select **Authenticators**.



3. The **Authorization** window is displayed.

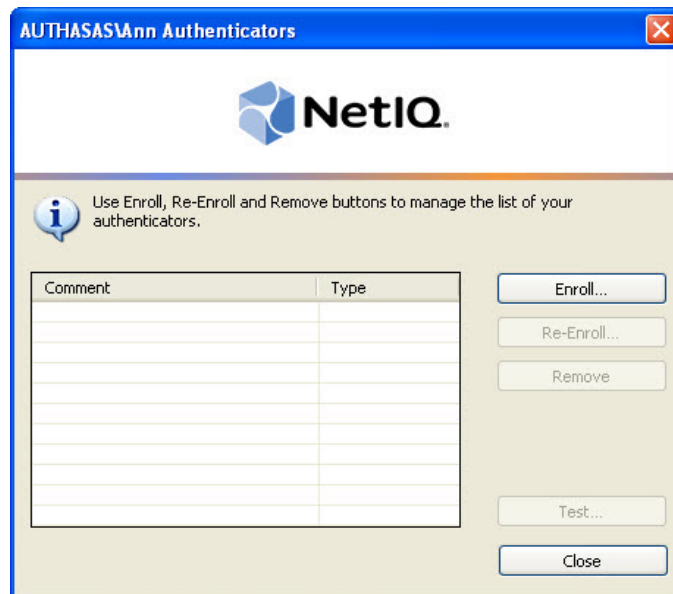


- From the **Logon method** list, select a logon method (an authenticator type or **Logon by password**).
- Click **Next**.

* To be able to add, re-enroll or remove an authenticator, you should use an authenticator as logon method.

* To be able to test an authenticator, you may use either authenticator or password as logon method.

After successful authentication the **Authenticators** window is displayed.



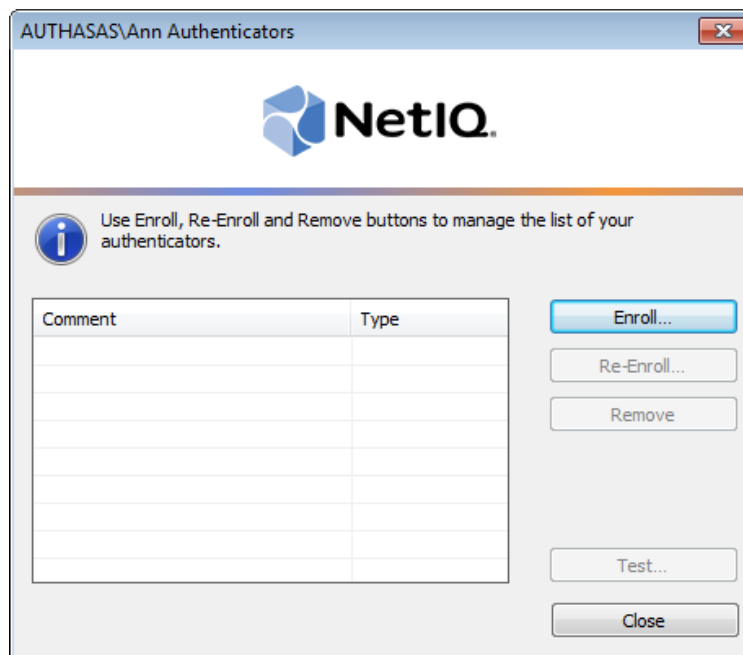
Buttons **Enroll**, **Re-Enroll** and **Remove** may also be unavailable (greyed out) if these actions are not allowed by NetIQ administrator.

Enrolling Authentec Fingerprint Authenticator

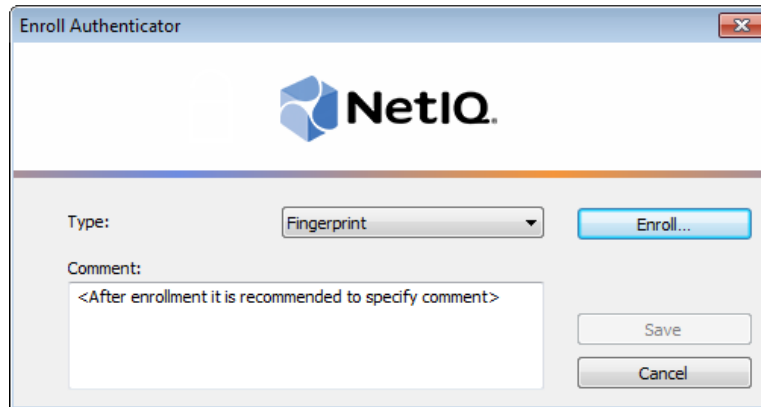
- * This operation may be forbidden by NetIQ administrator. In such cases the **Enroll** button in the **Authenticators** window is greyed out.
- * NetIQ administrator defines the maximum number of authenticators you can have which means you cannot enroll any more authenticators once you have reached the limit.

To enroll a Authentec fingerprint authenticator:

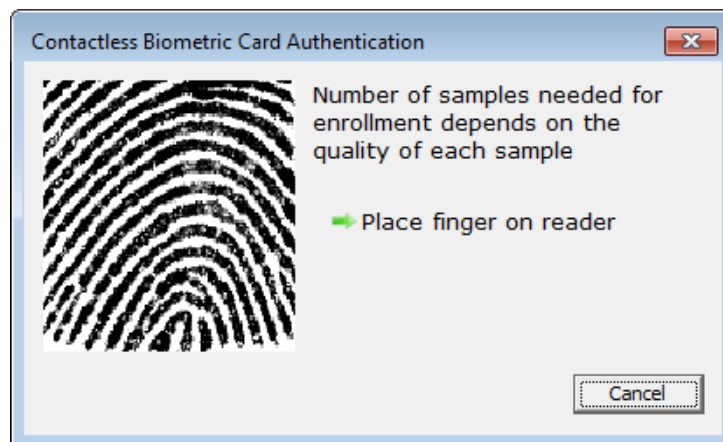
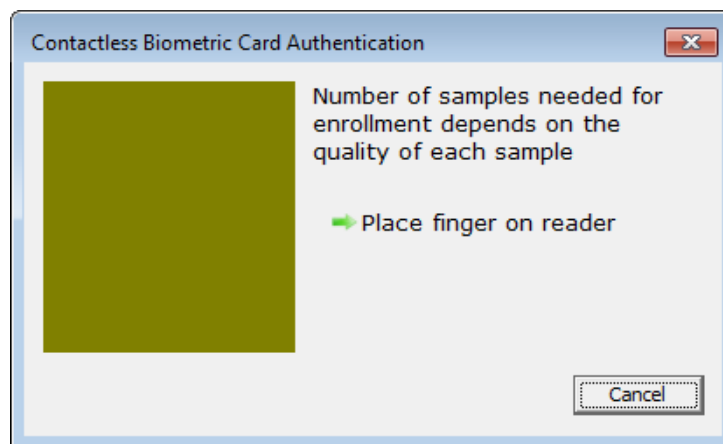
1. Click **Enroll...** button in the **Authenticators** window.



2. When the **Enroll Authenticator** window appears, select **Fingerprint** from the **Type** drop-down menu, click **Enroll...**

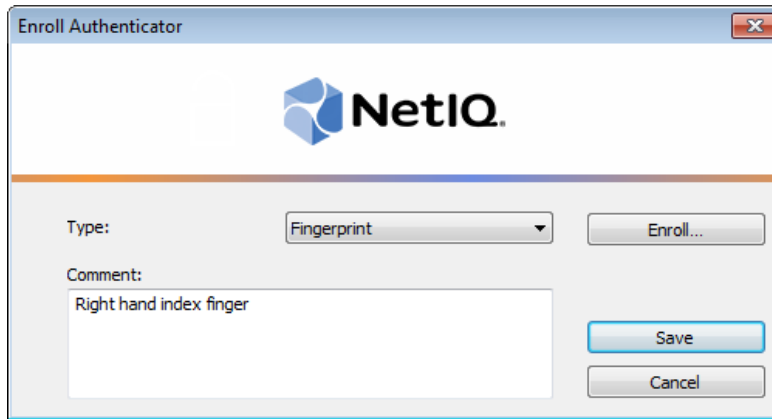


3. Select the finger to enroll. Place the finger you selected on the reader until the wizard gives you confirmation.

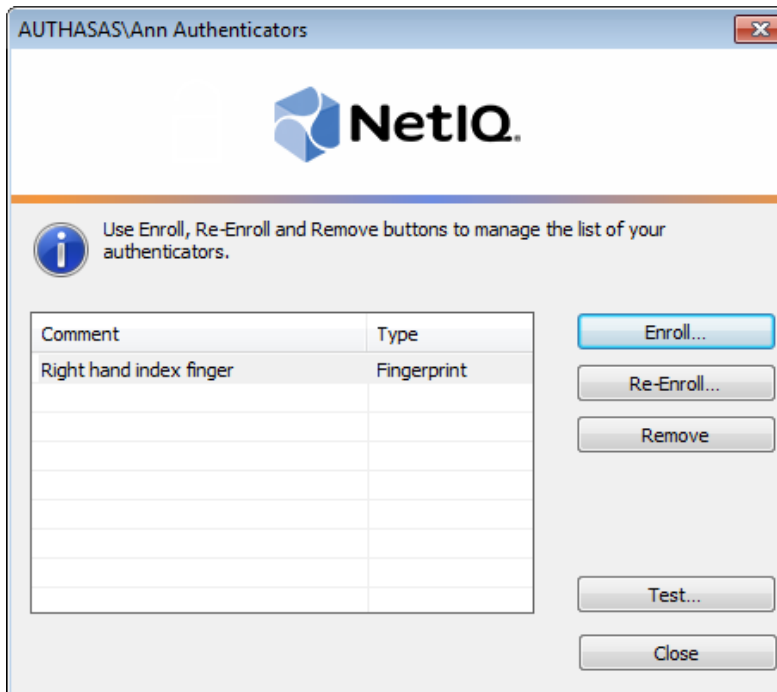


4. Finish the enrollment process.


5. Control is passed to the **Enroll Authenticator** window. Entering commentary is optional. Click **Save**.



6. A new authenticator is created and is visible in the list of authenticators in the **Authenticators** window.

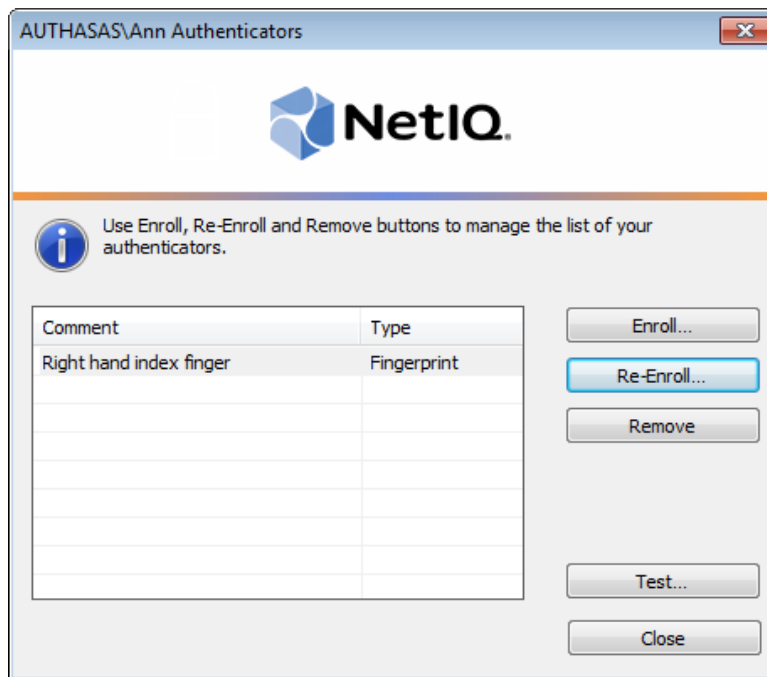


Re-enrolling Authentec Fingerprint Authenticator

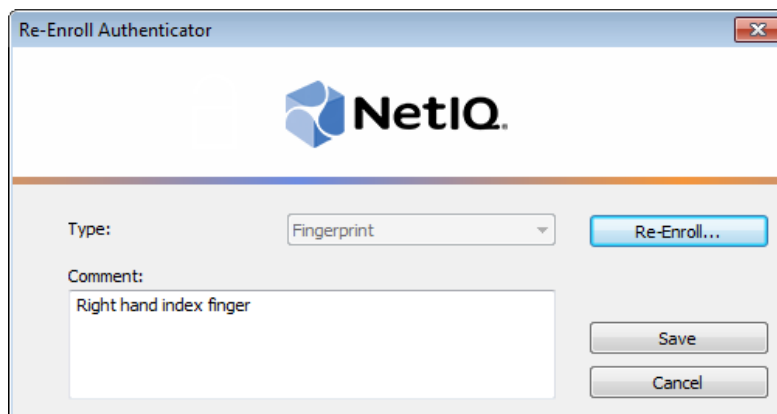
 This operation may be forbidden by NetIQ administrator. In such cases the **Re-Enroll** button in the **Authenticators** window is greyed out.

In order to re-enroll a created Authentec fingerprint authenticator:

1. Select **Fingerprint** in the list of authenticators, click **Re-Enroll...** in the **Authenticators** window.



2. Click **Re-Enroll...** in the **Re-Enroll Authenticator** window.

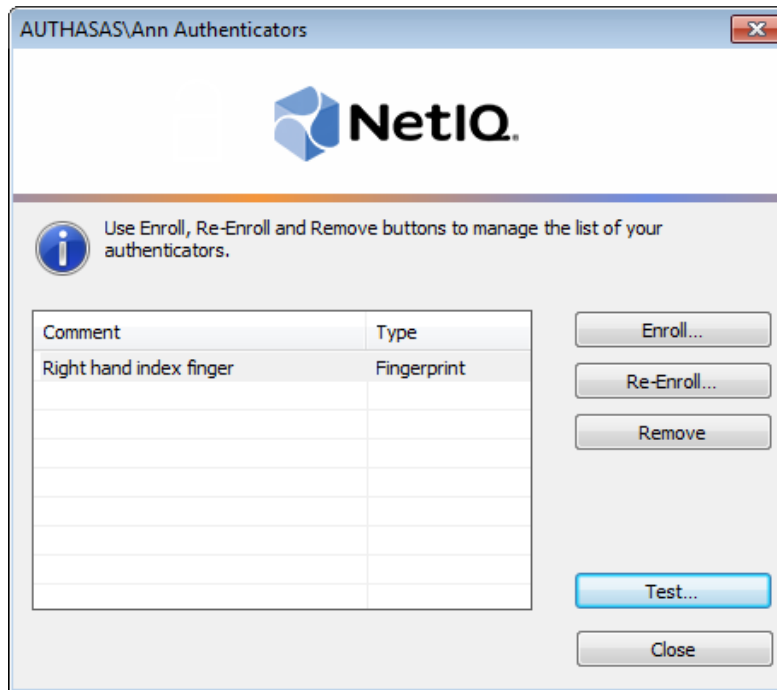


3. Fulfill the steps as during your initial enrollment process.

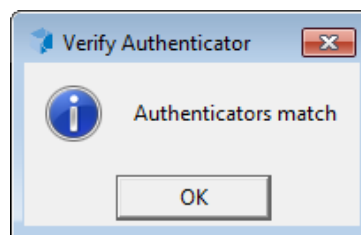
Testing Authentec Fingerprint Authenticator

To test a created Authentec fingerprint authenticator:

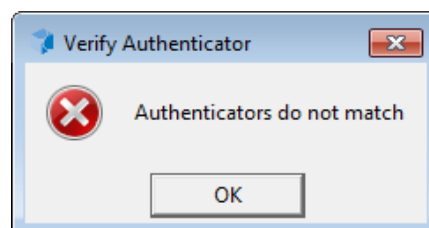
1. Click **Test...** in the **Authenticators** window. Place finger on the reader.




2. When a confirmation message saying: "Authenticators match" appears, click **OK**.





3. When authenticators do not match an error message appears. Click **OK**.



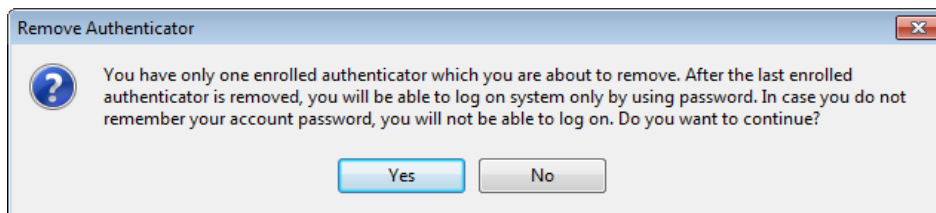
Removing Authentec Fingerprint Authenticator

 This operation may be forbidden by NetIQ administrator. In such cases the **Remove** button in the **Authenticators** window is greyed out.

 If you are allowed to remove your authenticator, do not do this just because you do not like your current authenticator. Instead, you can re-enroll it (see [Re-enrolling Authentec Fingerprint Authenticator](#)).

 Do not remove the only authenticator you have. If you have no authenticators, you can log on with your password only. If a random password was generated for your account and you have removed the only authenticator, you cannot log on in any way.

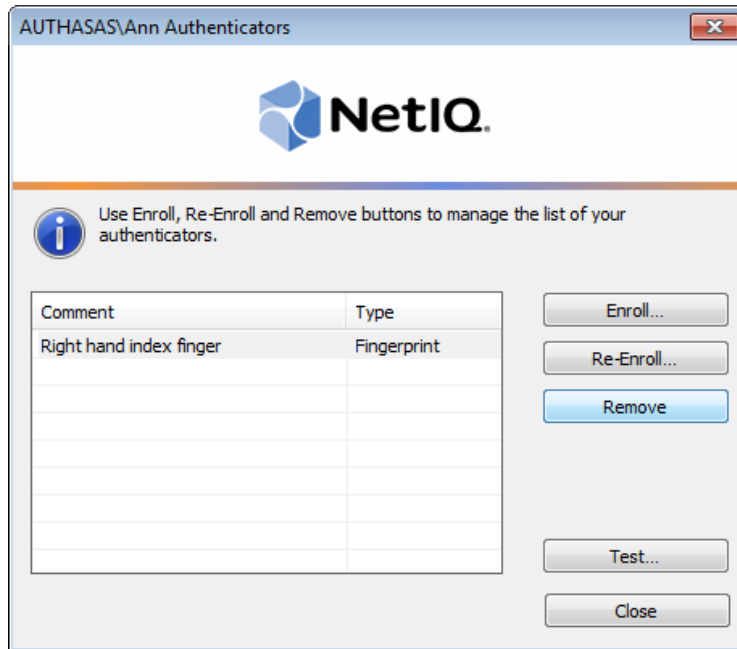
NetIQ Advanced Authentication Framework™ prevents you from accidentally removing your only authenticator by showing the following dialog:



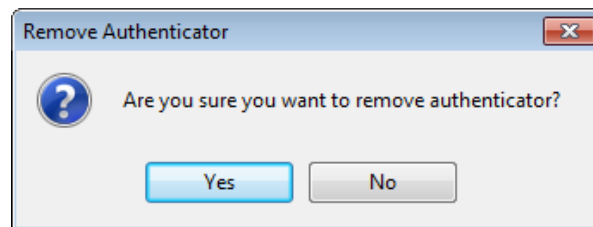
If you removed the only authenticator and do not know your password, contact NetIQ administrator.

To remove an authenticator:

1. Click **Remove** in the **Authenticators** window.



2. If you have two or more authenticators enrolled a dialog box saying: "Are you sure you want to remove authentication?" appears. Click **Yes**.



The authenticator will be removed from the list of your authenticators.

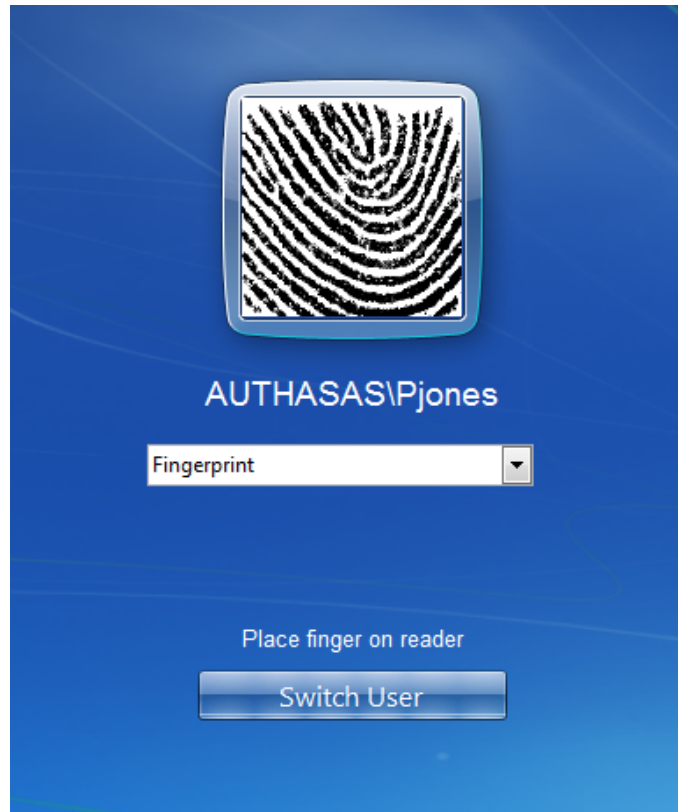
Logon Using Authentec Authentication Provider

To log on using Authentec authentication provider:

1. Start your computer. From logon screen, press **[Ctrl]+[Alt]+[Del]**.
2. If you want to select another user, click **Switch User**.
3. Select your user name if available or click **Other User**.
4. Type your user name (not needed unless **User** has been already selected).
5. Select **Fingerprint** as a logon method.




6. Place your finger on the reader.



7. If your fingerprint matches the enrolled one, you will log on successfully.

Troubleshooting

 This chapter provides solutions for known issues. If you encounter any problems that are not listed here, please contact the technical support service.

Before contacting the support service:

We strongly request that you give a possibly detailed description of your problem to the support technicians and attach logs from the faulty computer. To obtain the logs, use the LogCollector.exe tool (\Tools\LogCollector). Follow the steps below:

1. Copy LogCollector.exe to the local C:\ disk on the faulty computer.

 The tool may not work from a network drive.

2. Run LogCollector.exe.

3. In the dialog that opens, click **Enable all**. As a result, all items in the **Debugged components** section are selected. Close the dialog.

4. Reproduce the steps that caused the problem.

5. Run LogCollector.exe. again and click **Save logs**.

Save the logs to archive.

Cannot Enroll Authenticator

Description:

Authenticator is not enrolled because:

- a. The authentication device is not functioning.
- b. The **Type** list in the **Enroll Authenticators** window is empty or fingerprint authenticator type is absent.
- c. The **Enroll** button in the **Authenticators** window is greyed out.

Cause:

- a. The reader is unplugged, out of order or the proper drivers are not installed.
- b. The fingerprint authenticator type is not supported (no Authentec fingerprint authenticator provider is installed).
- c. The operation is forbidden or you have reached the limit on authenticators' number.

Solution:

- a. Make sure the reader is plugged in. Refer to device manual. If the device seems out of order, contact NetIQ administrator.
- b. Contact NetIQ administrator.
- c. No authenticators can be added. For more information, contact NetIQ administrator.

Index

A

Authentication 1, 3-4, 16
Authenticator 3-4, 7, 21

C

Client 3
Control 4, 11

E

Enroll 5, 9, 13, 21

F

Fingerprint 4, 10, 13, 15-16, 18

L

Logon 3, 8, 18

M

Manage 7
Microsoft Windows Server 2003 4, 7

R

Remove 5, 9, 16

U

User 1, 4, 18

W

Windows 7
Windows Vista 4