



Advanced Authentication 6.3 Linux RADIUS Agent Installation Guide

August 2020

Legal Notices

© Copyright 2021 Micro Focus or one of its affiliates.

The only warranties for products and services of Micro Focus and its affiliates and licensors (“Micro Focus”) are as may be set forth in the express warranty statements accompanying such products and services. Nothing herein should be construed as constituting an additional warranty. Micro Focus shall not be liable for technical or editorial errors or omissions contained herein. The information contained herein is subject to change without notice.

Contents

About this Book	5
1 RADIUS Agent for Linux	7
2 System Requirements for Installing the RADIUS Agent for Linux	9
3 Installing and Uninstalling the RADIUS Agent in Linux	11
Installing the RADIUS Agent	11
Uninstalling the RADIUS Agent	11
4 Troubleshooting	13
Collecting Logs for Debugging	13
Starting, Stopping, Restating RADIUS Agent	13

About this Book

The Advanced Authentication RADIUS Agent installation for Linux guide provides information about system requirements and how to install and configure the RADIUS Agent on Linux.

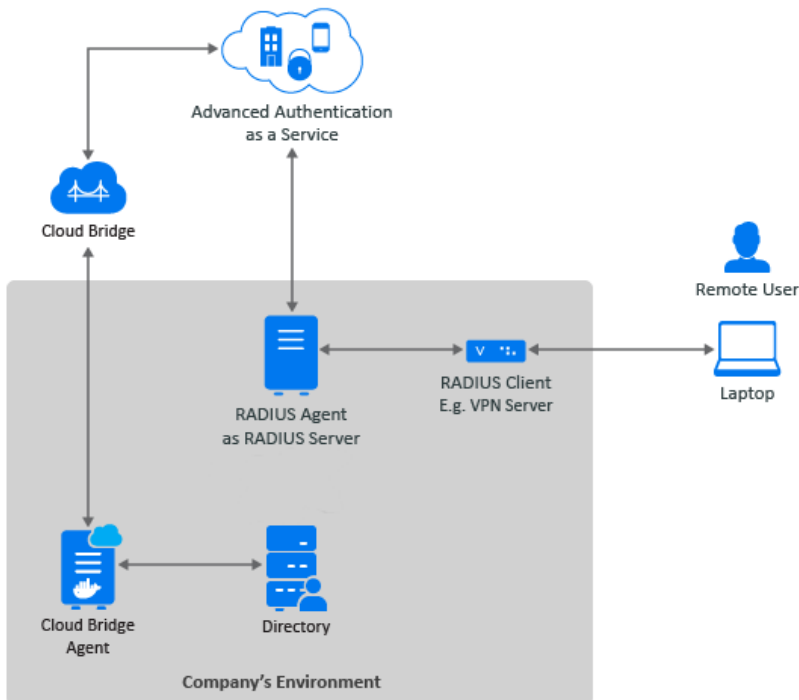
Intended Audience

This guide is intended for the Advanced Authentication administrators.

1 RADIUS Agent for Linux

The Advanced Authentication RADIUS agent for Linux enables you to configure multi-factor authentication for RADIUS clients. The RADIUS agent uses the existing RADIUS events and RADIUS rules.

The RADIUS Agent can be installed and configured on Linux and it acts like middleware between the Advanced Authentication server which is located in the cloud (e.g. in case of SaaS version) and RADIUS Clients which are in on-premise.



2 System Requirements for Installing the RADIUS Agent for Linux

Before installing the Advanced Authentication RADIUS Agent in Linux, ensure that the following requirements are met:

- ♦ SUSE Linux Enterprise Server 12 Service Pack 4 or SUSE Linux Enterprise Server 15 Service Pack 1 is installed.
- ♦ RADIUS Script is generated. For more information, see [Scripts Option](#).
- ♦ Linux host with following docker and docker-compose is ready:
 - ♦ Docker-compose version 1.23.2.
 - ♦ Docker version 18.09.1

You must have the administrator privileges to install and uninstall the RADIUS Agent in Linux.

3 Installing and Uninstalling the RADIUS Agent in Linux

This chapter contains the following sections:

- ♦ [Installing the RADIUS Agent](#)
- ♦ [Uninstalling the RADIUS Agent](#)

Installing the RADIUS Agent

Perform the following steps to install RADIUS Agent for Linux.

- 1 Run the RADIUS Script. For more information, see [Scripts Option](#).

Uninstalling the RADIUS Agent

- 1 Run the following command to list dockers:

```
docker ps -a
```

- 2 In the output, find the container ID for the `aaf_radiusd-1` docker container.

- 3 Run the following command to remove the docker:

```
docker rm -f <container ID>
```


4 Troubleshooting

This chapter contains the following section:

- ♦ [“Collecting Logs for Debugging” on page 13](#)
- ♦ [“Starting, Stopping, Restating RADIUS Agent” on page 13](#)

Collecting Logs for Debugging

- 1 Run the following commands to enable the debug logging:

```
docker exec -it aaf_radiusd_1 /bin/sh
ssh-4.4# cd /etc/raddb
ssh-4.4# echo "test" > DEBUG
exit
```

- 2 Run the following command to restart the RADIUS container:

```
docker restart aaf_radiusd_1
```

- 3 Run the following command to view the live logs:

```
docker logs -f aaf_radiusd_1
```

- 4 Run the following commands to get all logs:

```
docker exec -it aaf_radiusd_1 /bin/sh
ssh-4.4# cat /var/log/radius/radius.log
```

Starting, Stopping, Restating RADIUS Agent

Perform the following steps to start or stop or restart the RADIUS Agent:

- 1 open `docker exec -it aaf_radiusd_1 /bin/bash/`.
- 2 Run the following commands as per your requirement:

Action	Command
To start RADIUS Agent	<code>docker start aaf_radiusd_1</code>
To stop RADIUS Agent	<code>docker stop aaf_radiusd_1</code>
To Restart RADIUS Agent	<code>docker restart aaf_radiusd_1</code>

