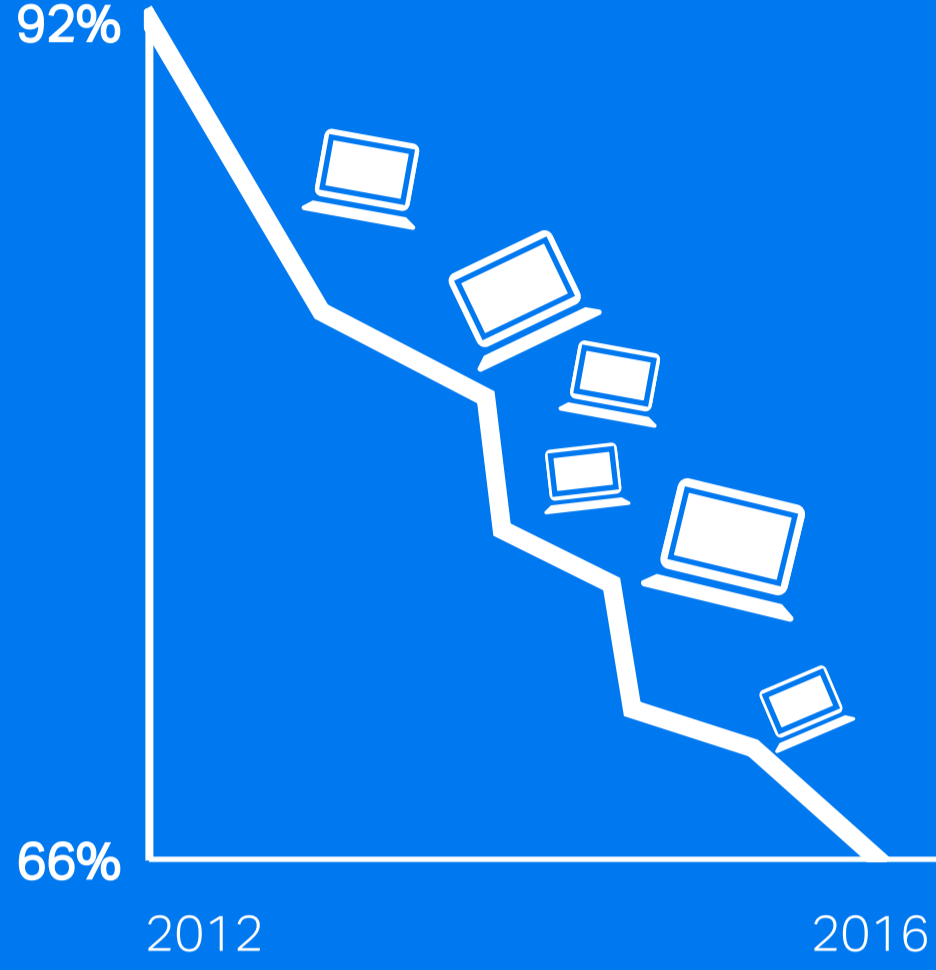
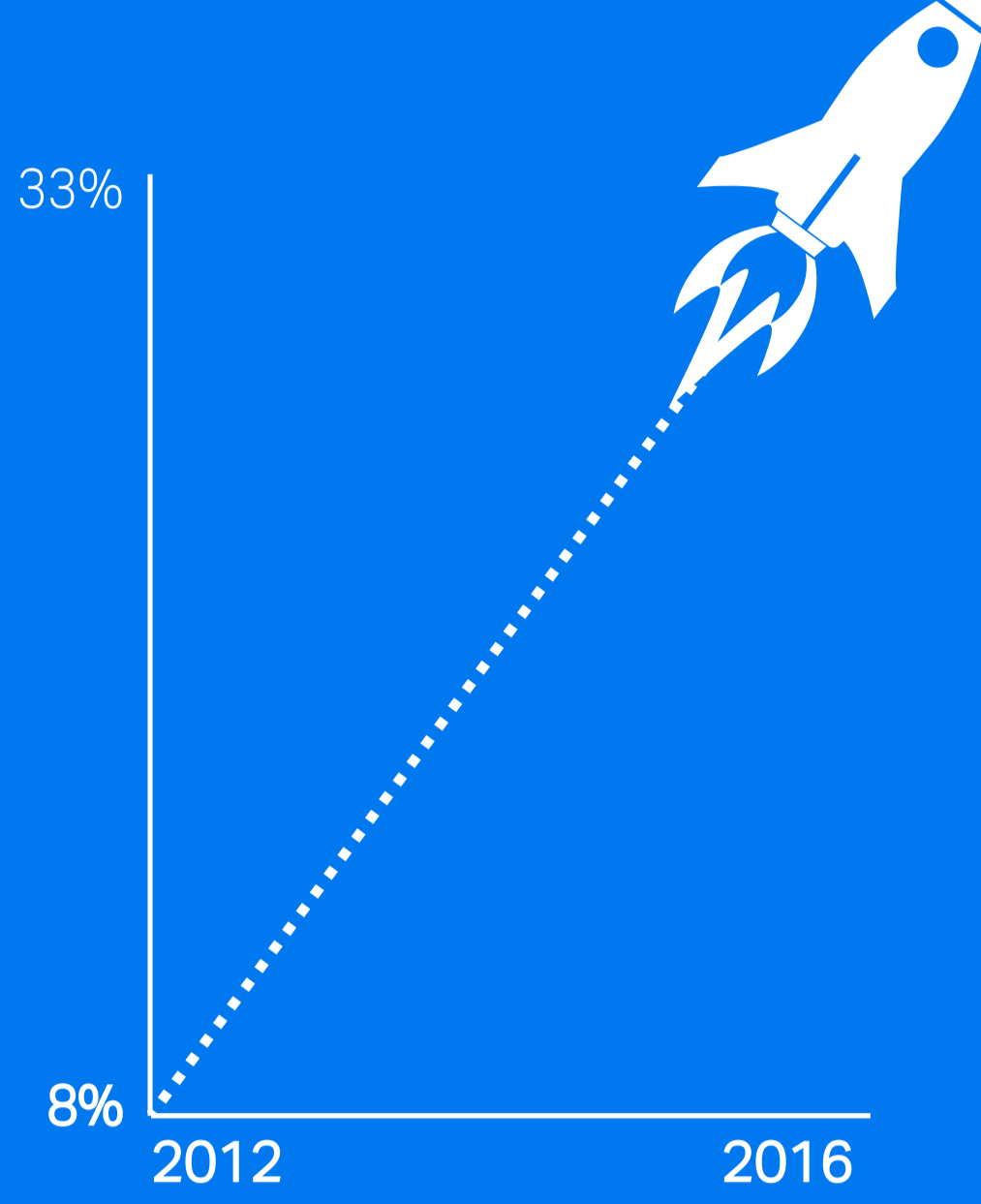


Mobile Apps in your Business

Mobile apps are quickly becoming a key platform for propelling business faster.

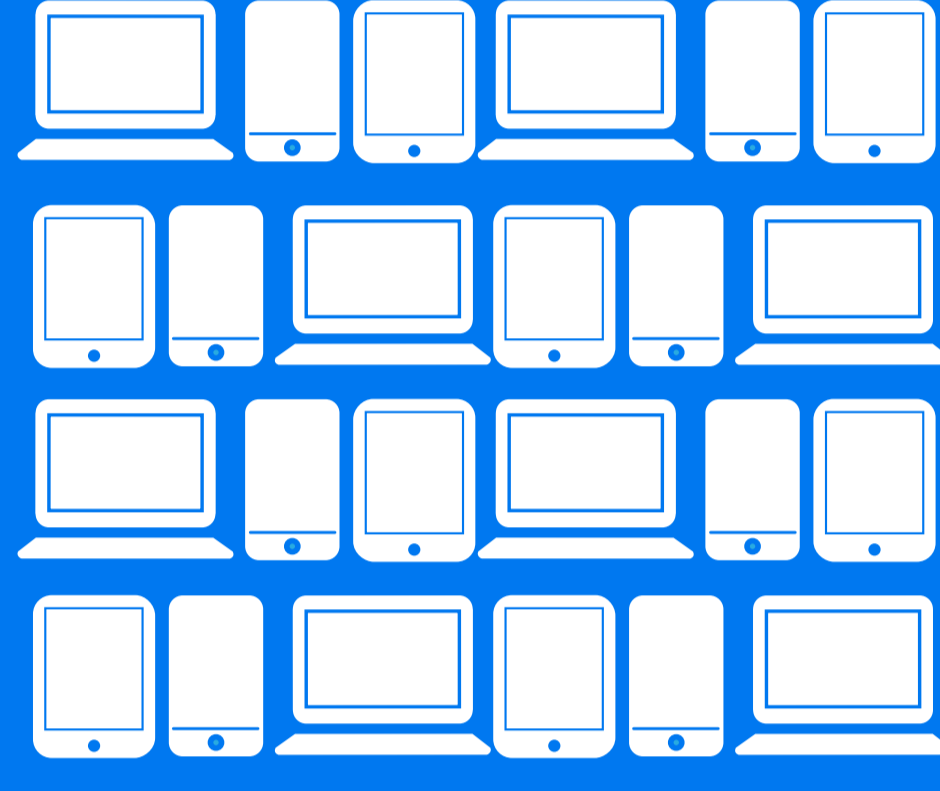
Corporate Trends

Browser use on mobile devices was only **8%** in 2012, today it's **33%**.



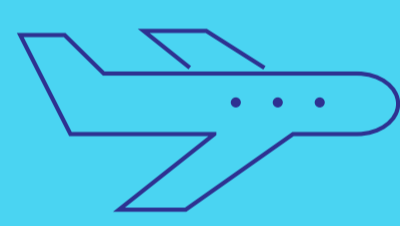
During the same time, **desktop/laptop use** fell from **92%** to **66%**.

Bring Your Own Device (BYOD) environment is forecasted to be **\$181 billion** by 2017.

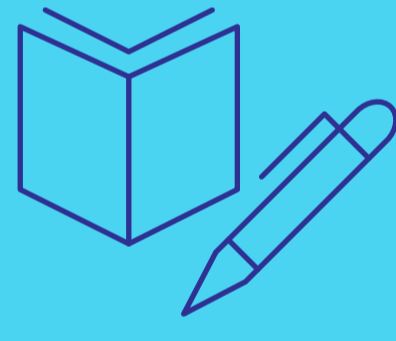


By 2020, global enterprise **mobility businesses** are predicted to reach **\$140 billion** per year.

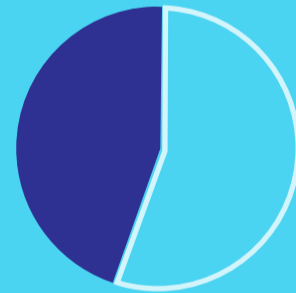
Mobile's Value to Corporations



93% measured increased productivity from staff using mobile devices to do work away from the office.



62% use mobile devices to both consume information and create content.



47% claimed that the productivity boost from mobile was substantial.



71% believe they still have head room for even more productivity gains.

The Corporate Mobile Apps Solution

Access Manager

*** Mobile users gain the **speed** and **convenience** of single sign-on.



One set of **access policies** across all platforms.



Use **Advanced Authentication** to deliver multi-factor authentication when needed.



Authentication types can be configured to match the **risk level** right for the business.



Cost saving **self-service administration** allows users to immediately deregister lost or stolen devices.



Visit [NetIQ.com/products/Access-Manager/](https://www.netiq.com/products/Access-Manager/) to learn how you can boost the mobile value.

Learn how Access Manager can help your corporate mobile use»